

Fastclip FCA

Fastening systems



The Pandrol Fastclip FCA rail fastening assembly is designed for use on ballastless tracks where vertical adjustment is required, without the need for a baseplate to achieve this.

Fastclip FCA can be fully assembled at the sleeper factory and delivered to site captive (pre-assembled) on the correctly inclined pre-cast element.

→ TECHNICAL FEATURES

Optimised for ballastless tracks

Pandrol Fastclip FCA is suitable for use with all forms of pre-cast elements, including mono block, twin blocks and slab panel. Pre-cast elements may be cast-in or resiliently mounted.

Highly evolved

Pandrol Fastclip FCA is an adjustable evolution of the globally trusted Pandrol Fastclip system. Component materials are based on long established Pandrol specifications.

Fully pre-assembled

The Pandrol Fastclip FCA system can be delivered to site fully pre-assembled on pre-cast concrete elements. Low clamping force joint bar and rail-free variants are available to meet special track needs.

Highly adjustable

Lateral adjustment of ± 5 mm per rail seat can be facilitated by custom side-post insulators. Vertical adjustment of + 20 mm is facilitated by custom components and shims. For special applications, please consult Pandrol.

Custom stiffnesses

Track stiffness typically to suit CEN track categories B, C and D. Custom stiffnesses can be provided, within limits, through consultation with Pandrol.

Fastclip FCA is installed using top-down construction with embedded pre-cast concrete elements.

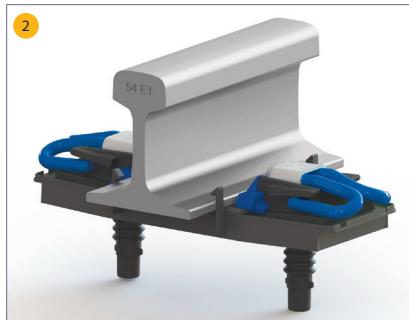
→ COMPONENTS

1. Clip and toe insulator:
 - Rail-free, zero toe load option available
2. Side-post insulators
3. Cast iron shoulders
4. Rail pad
5. Anchor bolts inside plastic inserts
6. Plastic construction plate



→ CONSTRUCTION

Installation by top-down direct pour method for slab track with no inclination is also possible.



1. The pre-assembled plastic construction plate is ready for attachment to the rail.
2. The assembly is clipped to the rail, ready for concrete to be poured to the correct level. Clips are in the parked position, to be driven into the working position when the concrete has set.

→ INSTALLATIONS



The Bowshank tunnel is fitted with track held firmly to retain long term alignment and allow high line speed on the sharply curved double track.

Reduced maintenance spares and mechanised installation and extraction assist to reduce the maintenance liability.

→ LEARN MORE



www.pandrol.com