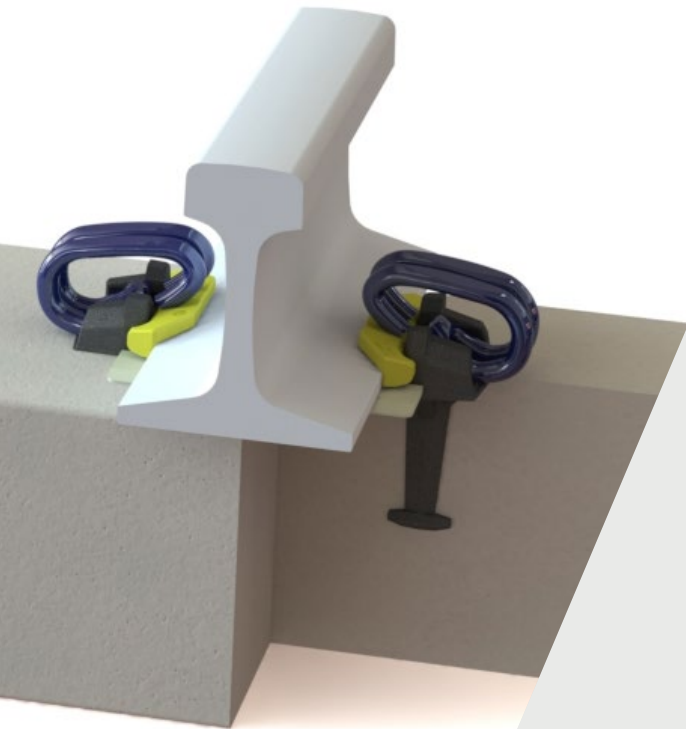


Deenik

Fastening systems



The Pandrol Deenik fastening system is designed to ensure a balanced distribution of stresses across the clip, providing superior performance and durability. Its advanced geometry delivers greater elasticity, enhanced fatigue resistance and extended service life, while maintaining a strong capacity to absorb deformations both during installation and throughout operation.

For additional security, the system is designed with anti-vandal properties and requires a dedicated tool for removal, making it highly reliable in demanding railway environments.

→ TECHNICAL FEATURES

Optimised

The Deenik is optimised for use on both concrete and steel sleepers, ensuring reliable performance across different track conditions.

Compatible

It is designed to be fully compatible with RN fastening retrofit applications, providing flexibility for installation and maintenance.

Lighter version

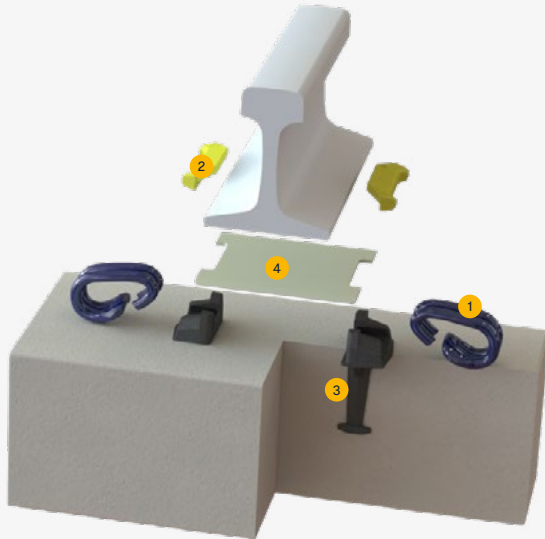
The latest generation of Deenik clip DE5191 are optimized with less material and more compact geometry, while maintaining at the same installation method and delivering equivalent fastening method.

Elastic Design

Its elastic design allows the clip to flex under repeated loads and return to its original shape, reducing the risk of breakage.

→ ADVANTAGES /

- The Pandrol Deenik fastening system is designed to evenly distribute stresses across the clip, ensuring reliable track performance and long-term stability.
- The system offers strong fatigue resistance, extending service life and lowering maintenance requirements.
- It also absorbs deformations during installation and in service, helping the fastening remain effective under varying conditions.
- To safeguard against tampering, the Deenik fastening includes anti-vandal features. A dedicated tool is required for removal, offering an additional layer of security in exposed or high-risk environments.



COMPONENTS /

1. Clip
2. Rail insulator
3. Anchor screws
4. Base plate pad

→ SPECIFICATIONS /

Assembly performance data

Recommended categories	B, C, E
Type of track	Slab
Rail inclination	Provided in the baseplate or concrete as required
System type	Deenik
Static Stiffness	> 16 MN/mm
Dynamic Stiffness	On demand
Lateral adjustment	± 10 mm
Vertical adjustment	Up to +60 mm
Gauge adjustment	± 20 mm
Electrical insulation	> 10 kΩ

Performance values can be varied, depending on product configuration. For any other configuration, please contact us.

Standard compliance

- EN 13146 / Arema Test Method

→ LEARN MORE

