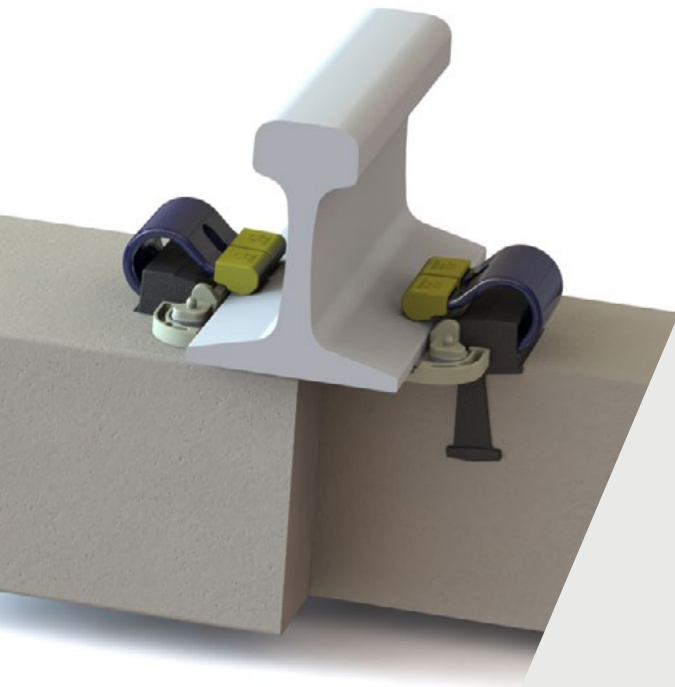


Safelok III

Fastening systems

Safelok Range

The Safelok system ensures all components remain captive on the sleeper.



Safelok III builds upon its predecessors by meeting the need for fast, efficient track installation and reduced maintenance. All components are captive on the tie when delivered to site.

The system exceeds the standards and requirements established by the world's major railroads and provides optimal performance over a wide range of operating conditions.

→ TECHNICAL FEATURES

Mechanised installation

Fast, fully mechanised application and removal with existing track equipment.

Performs well in a variety of conditions

Meets or exceeds the standards and requirements established by the world's major railroads and provides optimal performance over a wide range of operating conditions.

Lock-in Feature

Mechanical lock-in feature provides positive clip retention.

Prevents metal-to-metal contact

No metal-to-metal contact at the clip/rail interface.

→ ADVANTAGES /

- Safelok III is pre-assembled and captive to the tie, meaning there is a significant reduction in the manpower required during rail installation and adjustment.
- Low profile shoulder is less likely to be damaged.
- Exceptional gage retention and outstanding durability.
- The dual-insulator design results in extended component life and significantly reduces maintenance costs.
- All components remain on the track during rail changeout or de-stressing



COMPONENTS /

1. Clip and Toe insulator
2. Side-post insulator
3. Rail Pad

→ SPECIFICATIONS /

Assembly performance data

Recommended categories	B, C, E
Type of track	Ballasted
Rail inclination	1/40
System type	Safelok
Static Stiffness	> 600 kN/mm
Dynamic stiffness	According to the application requirements – please contact Pandrol for further clarification.
Lateral adjustment	
Vertical adjustment	
Gauge adjustment	± 6 mm
Electrical insulation	Exceeds AREMA 30

Standard compliance

- Arema 30 Test Methods

Performance values can be varied, depending on product configuration. For any other configuration, please contact us

→ LEARN MORE



www.pandrol.com