

# Adjustable CableGuard

Track Equipment

## Adding Value

Introducing the Adjustable CableGuard

“ A simple yet effective product that improves the reliability of the rail network, through reduced signal and power failures. ”



Building upon the success of the original (rigid) CableGuard of which over 1,200,000 units have been sold worldwide, the new adjustable design accommodates most rail types and allows for the use of cable ties. The adjustable CableGuard is also available in a flame-retardant material for underground/tunnel applications.

The Adjustable CableGuard has been developed as a “fit and forget” product, to prevent track circuit failures by the creation of an insulating layer between the rail, sleeper and cable.

→ TECHNICAL FEATURES

### Highly adjustable

The Adjustable CableGuard's unique locking system enables simple and secure fitment to the bottom of the rail, ranging from 115mm (4 9/16 ") to 152mm (6").

### Product designed for over and underground application

Designed to meet international requirements that adjustable CableGuard is available in 2 variations.

A UV stabilised version for over ground applications and a flame-retardant version is available for underground and tunnel environments with more stringent fire and smoke requirements.

### Option to Secure Cable Ties

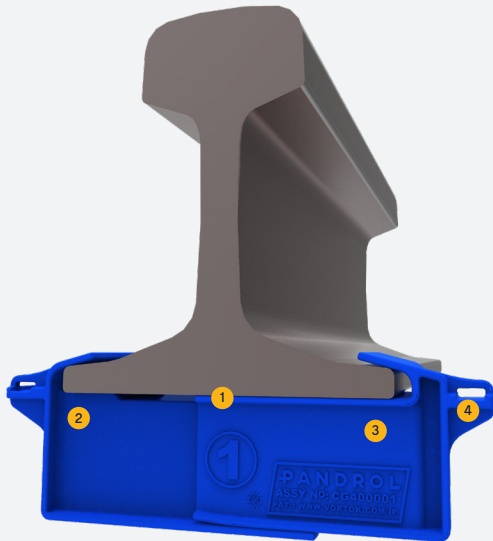
Integrated slots can accommodate the use of cable ties to further further secure the cable, keeping it in the desired position.

### Improved electrical insulation

Made from an insulating material, the adjustable CableGuard reduces the risk of the cable becoming damaged through electrical contact with the rail.

## → ADVANTAGES /

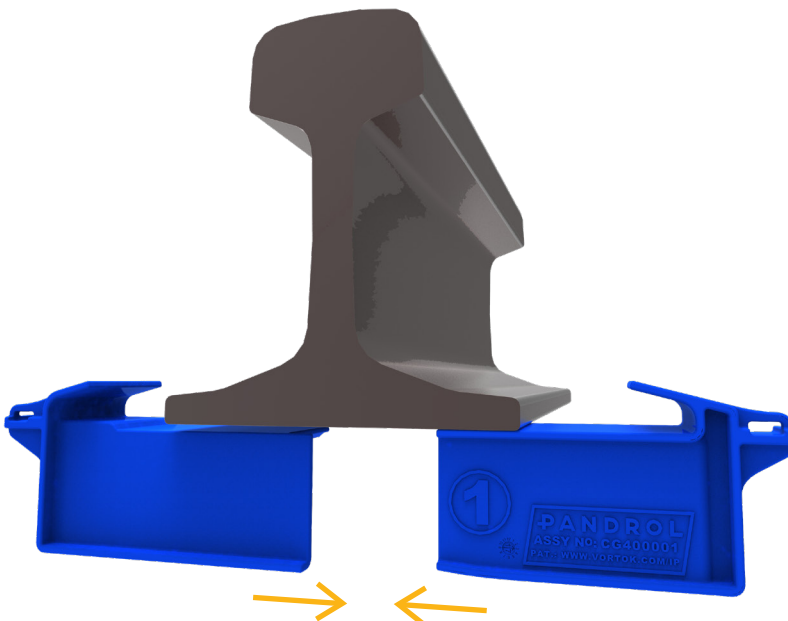
- The simple to use 2-part design enables the product to be installed in seconds without the use of tools.
- The adjustable CableGuard secures cables closer to the sleeper than alternative models, reducing the risk of the cable moving and enabling efficient and professional cable routing.
- By securing and protecting the cable, cable wear through sleeper and rail abrasion is prevented. This advanced protection reduces the risk of signal and power failures leading to a reduction in downtime and costly maintenance.



## → COMPONENTS /

1. Adjustable locking system
2. Left side support bracket
3. Right side support bracket
4. Slots to facilitate the use of cable ties

## → INSTALLATION /



Patent pending

## → SPECIFICATIONS /

Technical Specifications*	
Weight (overground version)	118g
Weight (tunnel version)	151g
Minimum width between jaws when fitted	115mm
Maximum width between jaws when fitted:	166mm

\* Data in document indicates typical performance. Actual performance is dependent on a range of external factors. Please contact us to see how Pandrol can tailor products to suit local operating conditions and specific requirements. Technical information in this document was correct at the time of printing. Improvements may since have been introduced as a result of our continuous research and development programmes.

LEARN MORE

