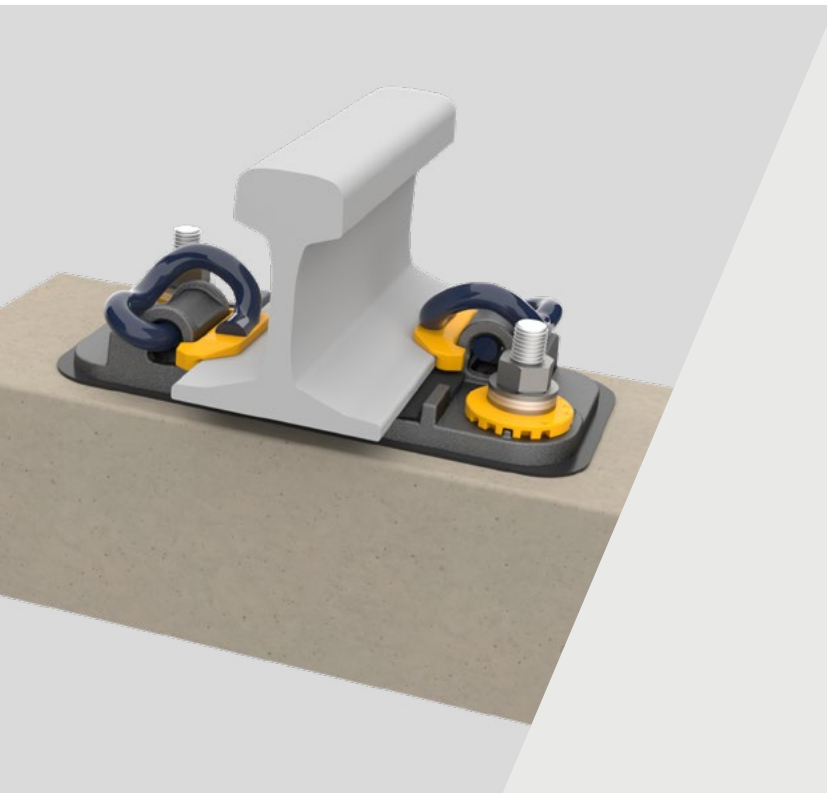


e-Clip SRS

Fastening systems



The Single Resilient System (SRS) e-Clip assembly is ideally suited to transit and freight applications where noise and vibration mitigation is required.

This non-bonded, low-profile system is fully insulated and provides excellent stray current protection. The SRS assembly consists of a cast base plate and a resilient pad. It can be used on wood and composite ties as well as slab track.

→ TECHNICAL FEATURES

Variable baseplate options

The SRS system is available with different baseplate configurations: a 2-hole offset footprint and a 4-hole inline.

Compact footprint

The 2-hole SRS baseplate provides a very compact footprint.

Electrical insulation

The baseplate system provides an exceptionally high level of electrical insulation, with the rail insulated from the baseplate and the baseplate insulated from the concrete slab.

Adjustability

The SRS baseplate achieves typical lateral adjustment of ± 8 mm, with additional adjustability possible to meet specific requirements. Typical vertical adjustment of up to 16 mm can be achieved with shims.

Track structure interaction

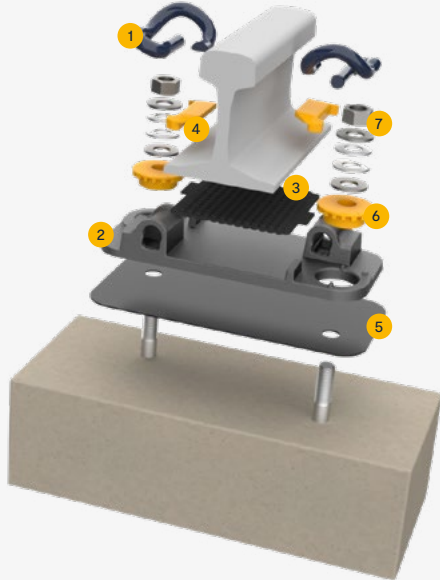
Rail fastening clips for the SRS baseplate are available in low toe load and a zero longitudinal restraint (ZLR) configuration to deal with the effects of track structure interaction.

Installation

The SRS baseplate is optimised for top-down construction, although the bottom-up method is also possible using alternative anchorage.

→ ADVANTAGES /

- Components can be easily changed to meet loading requirements.
- Sizes, thicknesses and materials can be tailored to suit various applications.
- An economical system that competes favourably with standard DF assemblies.
- Can easily accommodate freight traffic.



→ COMPONENTS /

1. e-Clip
2. SRS Baseplate
3. SRS Rail Pad
4. e-Clip Insulator
5. SRS Baseplate Pad
6. SRS Bush
7. Anchor Assembly

→ SPECIFICATIONS /

Assembly performance data

Recommended categories	A, B, C, D
Type of track	Slab
Rail inclination	1/20 or 1/40 (typical)
System type	e-Clip
Static stiffness	> 40 MN/m
Dynamic stiffness	> 45 MN/m
Lateral adjustment	± 8
Vertical adjustment	16 mm
Gauge adjustment	± 16 mm
Electrical insulation	> 5 kΩ

Performance values can be varied, depending on product configuration. For any other configuration, please contact us.

Standard compliance

- EN 13146 / Arema Test Methods

→ LEARN MORE

