

Adjustable CableGuard

Track equipment

Adding Value

Introducing the Adjustable CableGuard

“ The Pandrol Adjustable CableGuard is a simple, effective product that will improve the reliability of the rail network through reduced signal and power failures. ”



The Adjustable CableGuard is a 'fit and forget' product that prevents track circuit failures by creating an insulating layer between the rail, sleeper and cable. It builds on the success of the original, rigid CableGuard design, which has sold over 1.2 million units worldwide.

The Adjustable CableGuard accommodates most rail types, with a unique locking system to allow easy yet secure fitment to the bottom of the rail. Built-in slots allow for the use of cable ties if preferred. The product is available in an overground version that is resistant to the effects of UV and in a flame-retardant material for use underground and in tunnels.

→ TECHNICAL FEATURES

Adjustability

The Adjustable CableGuard's unique locking system enables simple and secure fitment to the bottom of the rail, ranging from 115mm to 152mm.

Overground and underground versions

The CableGuard is available in two variations: a UV-stabilised version for overground applications and a flame-retardant version for use in underground and tunnel environments, with more stringent fire and smoke requirements. Both have been designed to meet international requirements.

Slots to accommodate cable ties

Integrated slots can accommodate the use of cable ties to further secure the cable.

Improved electrical insulation

The Adjustable CableGuard is made from an insulating material that reduces the risk of the cable being damaged through electrical contact with the rail.

Designed for simple, rapid installation

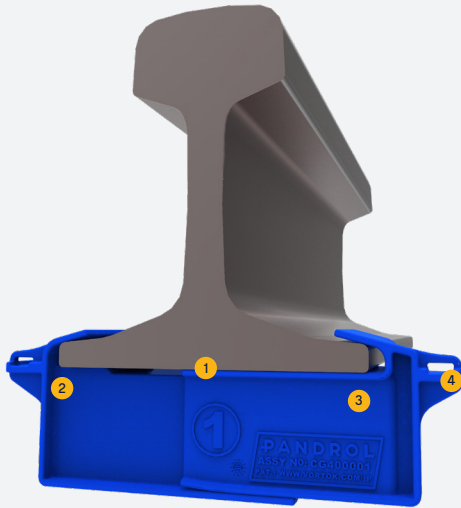
The CableGuard is installed by simply clipping both parts to either side of the rail foot, sliding together and pushing up to lock into place. No tools are required.

Maximising uptime

By preventing cable wear through sleeper and rail abrasion, the Adjustable CableGuard will reduce service disruption and the risk of signal failures, improving network reliability.

→ ADVANTAGES /

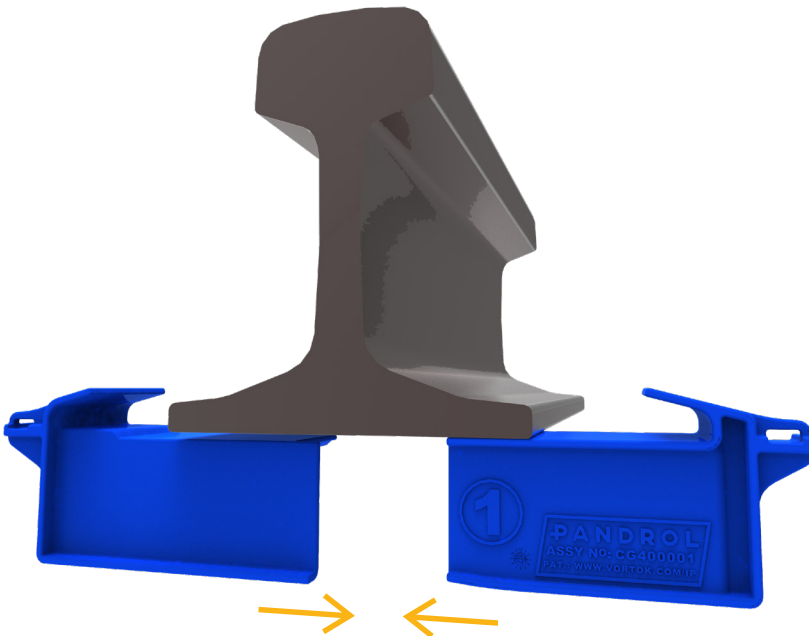
- The Adjustable Clamp Guard's simple, two-part design enables it to be installed in seconds without the use of tools, saving time and reducing labour costs.
- Cables are secured closer to the sleeper than with alternative products, reducing the risk of the cable moving and enabling efficient, professional cable routing.
- Improved electrical insulation reduces the risk of the cable being damaged through electrical contact with the rail.
- The Adjustable Clamp Guard secures and protects the cable, preventing cable wear through sleeper and rail abrasion and reducing the risk of signal and power failures. This in turn reduces service disruption and improves network reliability.
- Available in UV-stabilised and flame-retardant versions, the Adjustable Clamp Guard is ideal for use in both overground and underground/tunnel environments.



→ COMPONENTS /

1. Adjustable locking system
2. Left side support bracket
3. Right side support bracket
4. Slots to facilitate the use of cable ties

→ INSTALLATION /



Patent pending

→ SPECIFICATIONS /

Technical Specifications*	
Weight (overground version)	118 g
Weight (tunnel version)	151 g
Minimum width between jaws when fitted	115 mm
Maximum width between jaws when fitted	166 mm

→ TESTING /

- Meets BS EN 50125:3 'On Rail' test criteria for shock and vibration
- Meets BS EN 60068-2-6 criteria for endurance sine sweep vibration

* Data in document indicates typical performance. Actual performance is dependent on a range of external factors. Please contact us to see how Pandrol can tailor products to suit local operating conditions and specific requirements. Technical information in this document was correct at the time of printing. Improvements may since have been introduced as a result of our continuous research and development programmes.

→ LEARN MORE

