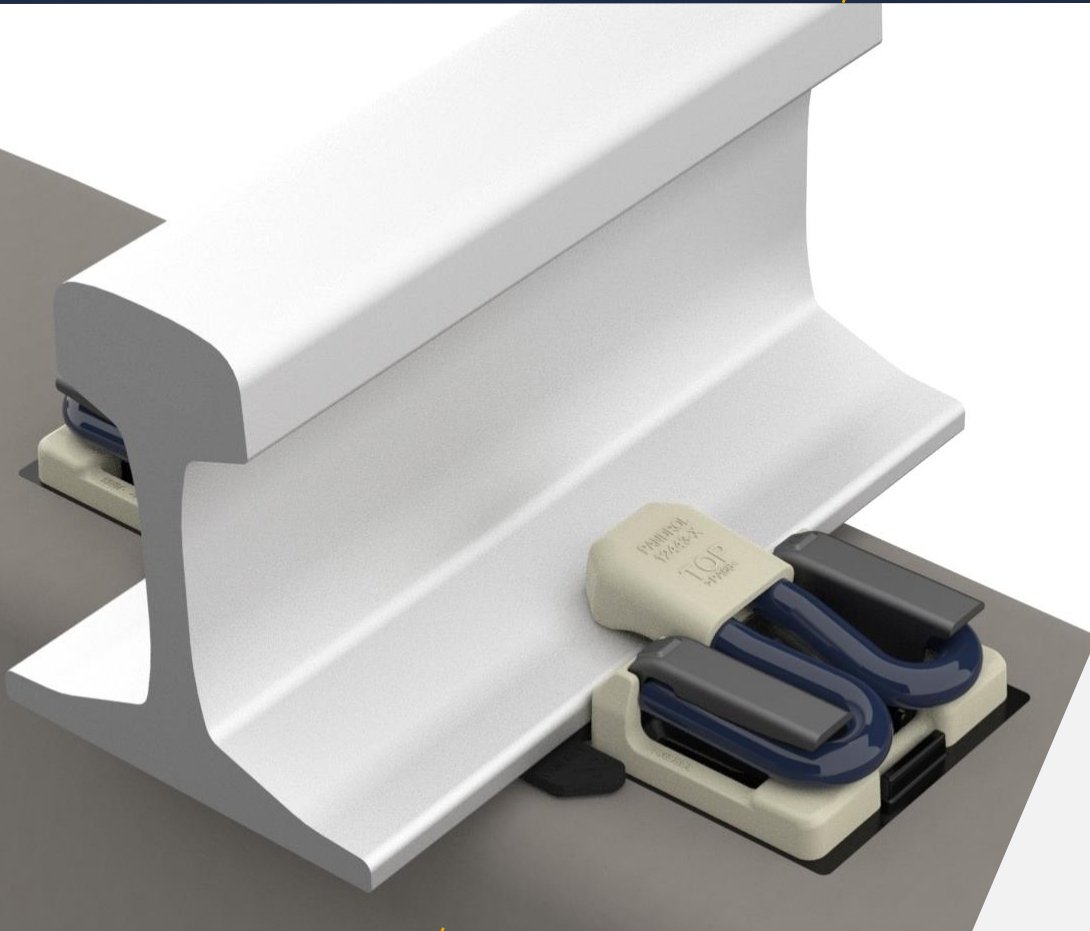


PANDROL

FASTCLIP FE Assembly

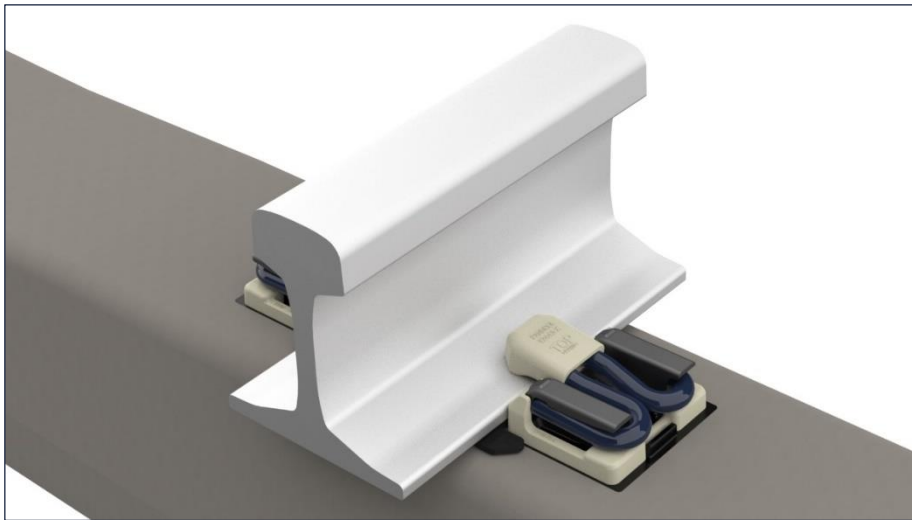
PRODUCT GUIDE



001-07_C
3rd February 2021

Partners in excellence

General Description



PANDROL FASTCLIP FE is a resilient, threadless rail fastening system with a unique PANDROL switch on-switch off function that enables fast, efficient track installation and reduced maintenance costs.

Sleepers arrive on site with all components held captive and the clips set at the parked position. It is 'switched on' by driving the clip on to the rail foot using a track machine or handtool.

Options for gauge widening, redemption and gauge adjustment. Special track applications for joint bars, guard rails, zero longitudinal restraint (ZLR), and dual or triple rail requirements. The assembly can be fully dismantled for inspection and maintenance purposes. All parts are replaceable.

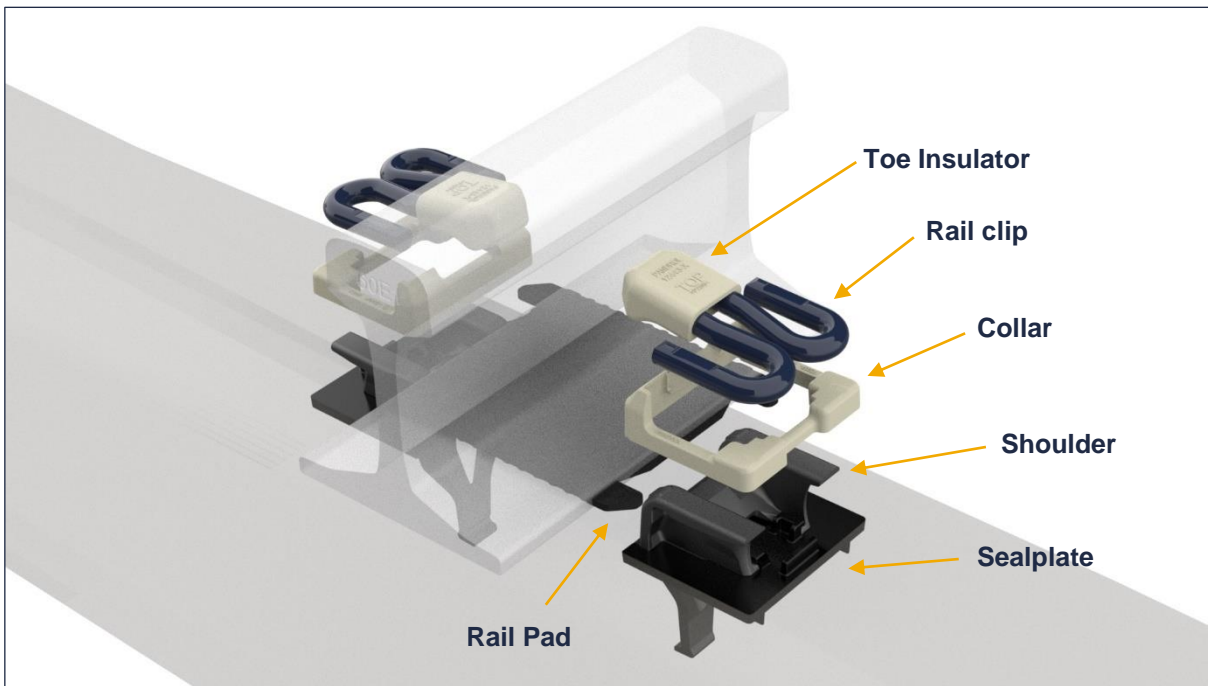
Recommendations for Ballasted Track

Technical Features										
FASTCLIP FE system		For use on concrete sleepers/blocks and steel sleepers. Optimised for high output track relaying/mechanisation and suited to all normal track construction techniques.								
Lateral adjustment (If required)		Track gauge adjustment +/-16mm, gauge widening up to +32mm, gauge redemption up to -32mm. Special applications consult PANDROL								
Vertical adjustment		On sleeper in ballast								
FASTCLIP FE		Operating Conditions					General Suitability			
CEN Cat	Track Type	Typical Rad (m)	Min Rad (m)	Typical Axle (kN)	Max Axle (kN)	Max Speed (km/h)	Assembly resilience (kN/mm)			
A	Light Urban / Tram	80	40	100	130	100	>200	100 - 200	50 - 100	15 - 50
B	Light Urban / Metro	100	80	160	180	140	✓	✓	✓	✓
C	Main Line	400	150	225	260	250	✓	✓	✓	
D	Main Line, High Speed	800	400	180	260	350	✓	✓	✓	
E	Heavy Freight	150	150	300	350	200	✓	✓		
>E	Very Heavy Haul Freight	150	150	350	400	120	✓			

Special Applications and Upgrades

Joint Bar	ZLR	Low Clamping Force	High Clamping Force	Corrosion Protection	UV Protection
✓	✓	✓	✓	✓	✓

Standard Components

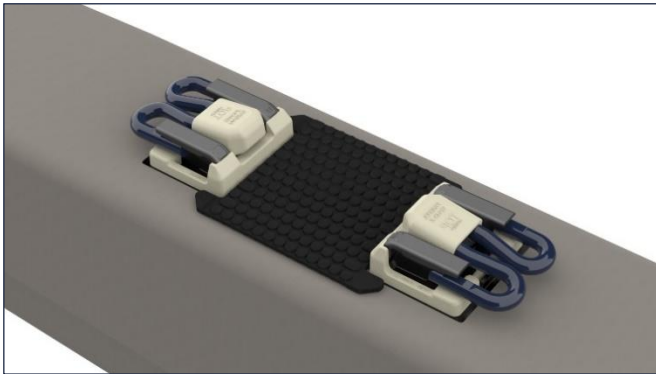


Component (per railseat)	Remarks	Part No.
FASTCLIP FE rail clip (2)	Spring steel	Refer to assembly drawing
Toe insulator (2)	HVN	
Pad - rail (1)	Rubber, EVA, Polyurethane options as required	
Collar (2)	HVN	
Shoulder (2)	SG Iron – Cast in Sleeper	
Sealplate (2)	Polypropylene – Cast in Sleeper	

Construction

Sleepers are delivered to site with all the components pre-assembled and held captive with the FASTCLIP FE clips installed to the 'parked' position ready to accept the rail. Once the rails are threaded the FASTCLIP FE clips are driven forward onto the railfoot either mechanically or manually.

Clips in parked position



Rail threaded and clips fully installed



The system lends itself to various track construction methods. Contact PANDROL for full details.

Construction Methods

Method	Loose Sleeper Relay	Track Panel Build	High Output Automated Track Relaying Machine
Pre-cast block/sleeper	✓	✓	✓

Special Applications

The PANDROL FASTCLIP FE system can be used with:

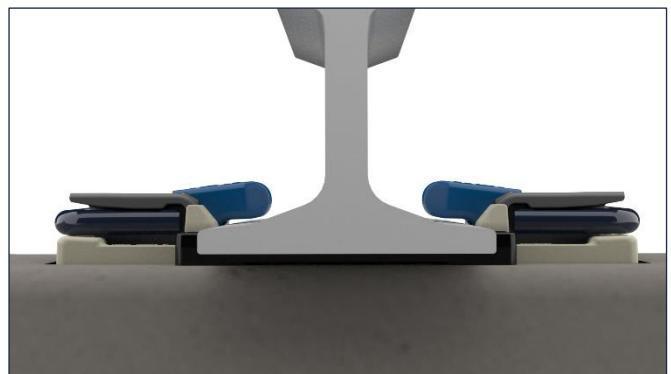
Rail joints. If required, the FE joint bar rail clip can be supplied along with an 'Interface Plate' which applies the clamping force to the rail foot in the limited space available.

ZLR systems. The zero longitudinal restraint system can be supplied where differential thermal movement between the support structure and rail is required.

Joint bar fastenings



ZLR – Zero longitudinal restraint



Handtools and Machinery

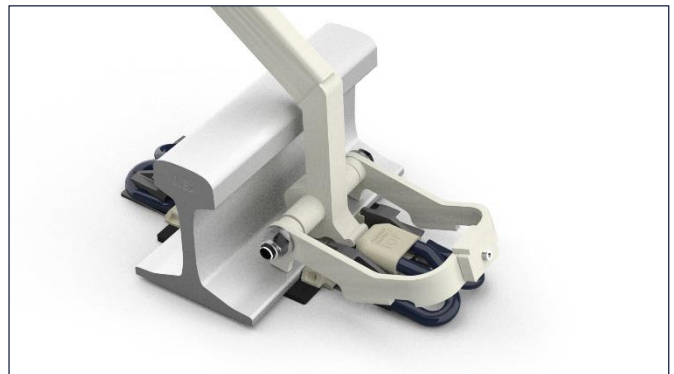
Handtools

The FASTCLIP FE assembly uses two different handtools; one tool for installation and one tool for extraction. Refer to the Operation and Maintenance Manual for all handtool information.

Clip installation



Clip extraction



Machinery

A range of automated machines are available for larger scale FASTCLIP FE sleeper installations.



Lateral Adjustment

The FASTCLIP FE system is available in different variants. Lateral rail adjustment can be offered through a simple exchange of the FASTCLIP FE insulator collars. PANDROL can supply a range of different thickness FASTCLIP FE insulator collars to enable lateral rail adjustment requirements, each collar being identified with a different colour.

- Standard configuration no lateral adjustment
- Track gauge adjustment up to +/-16mm
- Track gauge widening up to +32mm
- Track gauge redemption up to -32mm

Range of FASTCLIP FE Collars

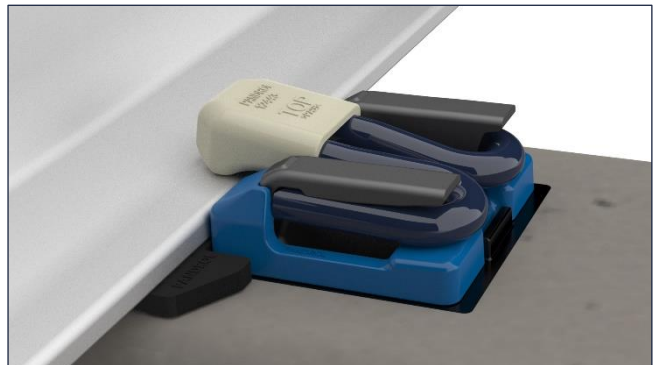
The table below lists all the available FE collars. The clip type will determine the limits of which thickness of collars can be used, thus the limit of lateral rail adjustment that can be obtained. Ultra-Violet (UV) options available in all thickness can be supplied black in colour.

Collar Increments of 1mm	
FE1400 series clip	FE1500 series clip
Collar range 6mm – 22mm	Collar range 8mm – 18mm

Example: 6mm Collar



Example: 14mm Collar



For further detail consult PANDROL



Safety, Life Cycle and Environmental Information

SAFETY - PANDROL Fastener components are safe to handle during installation and use based on intended and expected service conditions. Contamination during service from railway traffic (passenger and freight) is expected, so appropriate precautions (e.g. the use of personal protective equipment, PPE) are recommended when inspecting / replacing fastener components in this condition. Safety warnings are included on PANDROL brand handtools.

ENVIRONMENT - PANDROL Fastener components include recycling codes (e.g. plastic insulators, bushes, shims and pads) and can be readily recycled (e.g. cast iron). Local regulations should be respected when disposing of packaging materials and when disposing of worn / life expired fastener components.

PANDROL

Find out more at

pandrol.com

PANDROL Fastenings
Gateford Road
Worksop, Notts
S81 7AX
UK

© Pandrol

Partners in excellence