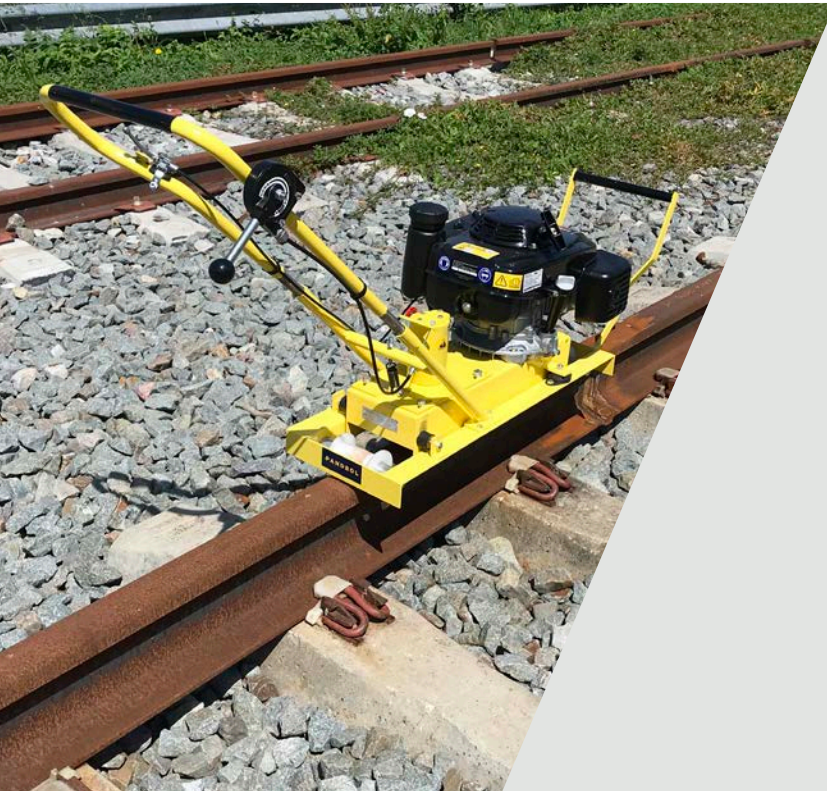


# Rail Cleaner DR40

Welding and track maintenance equipment



The Rail Cleaner DR40 is used after rail replacement to ensure the rail is rust-free. The cleaning machine brushes the top of the rail head, removing oxidation and ensuring a good friction contact between the railway vehicle wheels and the rail surface. In doing so, it guarantees an effective electrical connection on the top of the rail for efficient functioning of the track circuit (the signal system).

Two people are needed to place the Rail Cleaner DR40 on the track, but it can be operated safely and accurately by just one. The operator stands with one leg on either side of the rail and pushes the machine, which is guided on the rail by rollers. A thermic engine drives a metallic brush in rotation.

## → TECHNICAL FEATURES

### **Powerful engine**

The Rail Cleaner DR40 has a powerful, efficient four-stroke engine with belt transmission. It creates 4.1 kw of power at 3600 rpm.

### **Decarbonising brush**

The machine's brush is metallic, with high resilience threads. The brush is lowered from a lever mounted on the pushing frame and is fitted directly on an axle with a rotation speed of 600 rpm.

### **Insulated rollers**

The cleaning machine is guided along the rail by two insulated rollers.

### **Folding handle**

The machine's handle enables the operator to push the cleaner along the rail with ease. For ease of transportation, the handle can be folded to reduce the machine's dimensions.

### **Lightweight**

The Rail Cleaner DR40 weighs 40kg and can be lifted and moved by two people.

### **Safety system**

A mechanical sensor turns the engine off automatically when the machine is carried off the track.

## → ADVANTAGES /

- The Rail Cleaner DR40's light weight reduces the number of people needed to transport and clean the rail (two for transportation; one for operation).
- The machine's powerful engine and efficient brush design mean that the rail is cleaned quickly, in just one pass. This reduces railway downtime significantly.
- The high resilience brush threads enable effective cleaning to take place even if rails are very wet.
- The DR40's powerful engine, metallic brush, light weight and guiding rollers ensure that exceptional results are achieved with minimal operator effort.
- The machine's automatic engine cut-off makes it safe to use.
- Overall, the efficient design of the Rail Cleaner DR40 contributes to reducing the cost of railway maintenance.



## → COMPONENTS /

1. Powerful 4 stroke petrol engine
2. Insulated guiding rollers
3. Ergonomic foldable handle
4. Auto shut off security

## → SPECIFICATIONS /

### Technical specifications

Engine	Honda 4-Stroke GXV160
Power @ rpm	4.1 kw @ 3,600 rpm
Safety system during carrying	Included
Total weight	40 kg
Dimensions in working conditions	1460 x 430 x 755 mm
Dimensions during transport	1020 x 430 x 600 mm
Brush dimension	120 x 22.2 mm

## → LEARN MORE



[www.pandrol.com](http://www.pandrol.com)