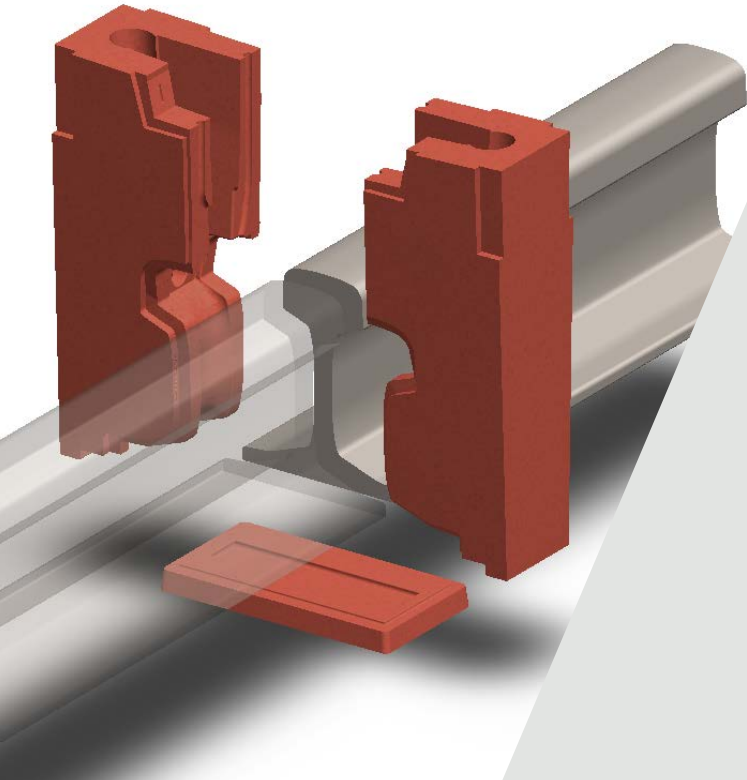


# PLA Evo

Aluminothermic welding

## Adding Value

The latest innovation in Pandrol aluminothermic welding process.



Launched in 2021, the PLA Evo is the latest optimised welding process, designed to be easy to use, improve performance and be fully compatible with the Pandrol aluminothermic welding product range such as Pandrol Connect and the High Flow Preheater.

Tested and approved against the European Standard EN 14730-1 Norm, the PLA Evo delivers improved metallurgical and mechanical behaviour, to optimise quality, lengthen the life of the weld and save time for the welder.

PLA Evo delivers improved performance and quality with its 3 piece mould design and new internal hydraulic geometry.

## → TECHNICAL FEATURES

### Optimised internal hydraulic geometry

The mould design has been developed to optimise the hydraulic geometry by improving flow.

### Designed with 3- piece-molds

The PLA Evo process comes with improved performance and delivers continuous geometry under the rail foot thanks to the 3-piece moulds.

### Compliant with the EN 14730-1 Norm

Tested and approved against the European Standard which defines the laboratory tests and requirements for approval of an aluminothermic welding process using welds produced in workshop conditions.

### Compatible with oxy propane and Pandrol HFP

Optimised thermal conditions are created by balancing the pre-heating, the Redox reaction and the solidification.

### Integrated within Pandrol Connect

The PLA Evo process is fully compatible with Pandrol Connect, our smart welding traceability App.

### Suitable for 25mm welding gap

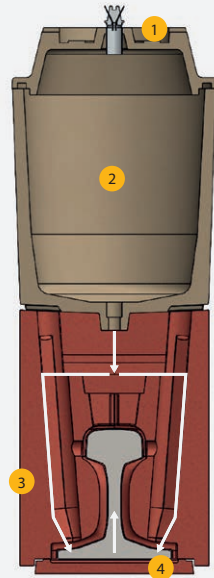
PLA Evo is suitable for use on a 25mm welding gap (25 +/-2 mm).

→ ADVANTAGES

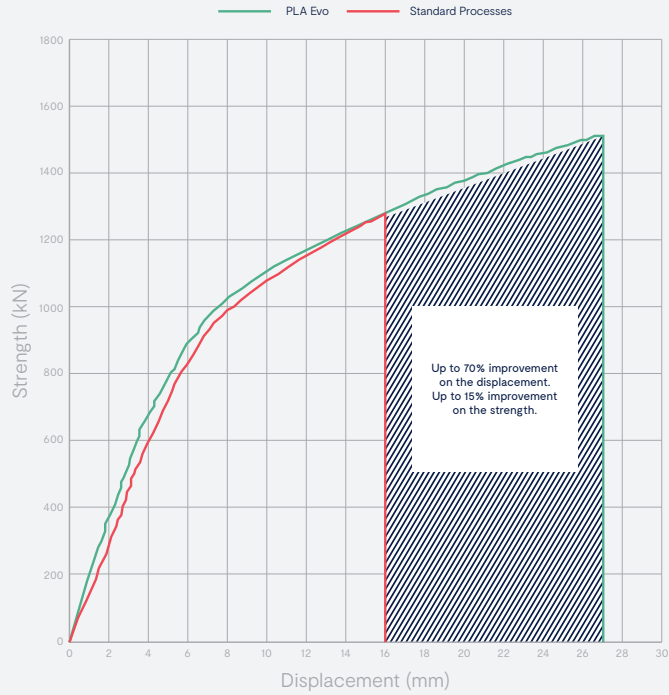
- An improved metallurgical quality has been developed to maximise the life of the weld and reduce maintenance costs.
- Designed for compatibility with Pandrol's High Flow Preheater and Mould, delivering ergonomic improvements for the welder and saving time.
- The 3-piece mould design eliminates discontinuity under the rail foot and improves the quality and lengthen the life of the weld.
- PLA Evo is a fully supported process, and full training can be provided locally by Pandrol welding experts or directly at the Pandrol Training Academy.

→ COMPONENTS

1. Startwel®
2. One Shot Crucible
3. 3-Piece Mould
4. Risers casting



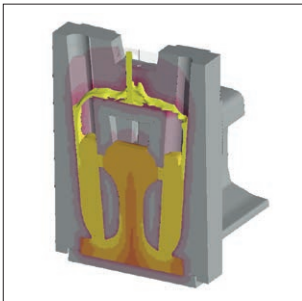
An improved performance of the weld



Slow bending test delivers in excess of 20% improvement weld quality.

→ INNOVATION

PLA Evo delivers an improved performance with its 3-piece mould design.



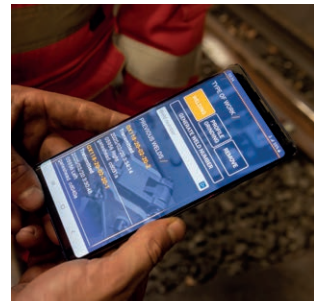
Innovative mould design to improve weld quality.



Eliminating discontinuity under rail foot.



Perform secure and safe welding thanks to the HFP preheater.



Pandrol Connect is a mobile app designed to support Aluminothermic Welders.

→ LEARN MORE