

Weld Shear Hand Pump EPM2

Welding & Maintenance Equipment



Pandrol's Weld Shear Hand Pump (EPM2) is a manual shearing machine designed to shear off excess metal after aluminothermic welding.

Excess metal remaining above the rail head during welding was traditionally removed manually with a hammer and chisel. The Weld Shear Hand Pump automates this process and reduces the risk of damaging the rail.

The shear is operated by a manual lever and fitted with a hydraulic pump. As a result, it is lighter and simpler to use than other shearing machines.

→ TECHNICAL FEATURES

Wide beams

The beams of the Weld Shear Hand Pump are wide, allowing for shearing directly through the moulds.

Integrated manual pump

The machine includes an integrated hydraulic pump – there is no need to plug in a separate pump.

Integrated blades

Two integrated blades, one on either side of the weld, cut off the excess metal. These are high-quality, full-cast tipped shear blades, powered by hydraulic rams with a built-in guidance system. Replacement shear blades are readily available and easy to fit.

Height and lateral adjustments

Adjustment screws enable the blades' cutting edge to be adjusted precisely, both laterally and vertically.

Retractable locking systems

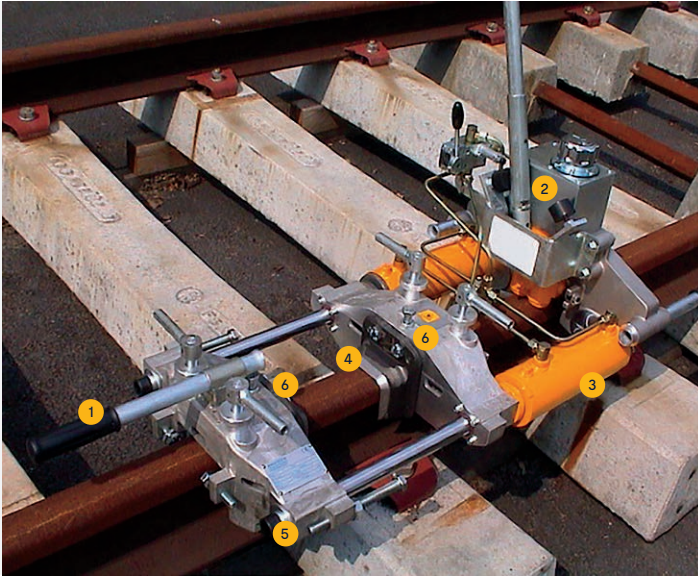
Locking systems fixed under the rail head prevent the shearing machine from rising up and adjust the cutting operation to the thickness of the metal deadhead.

Clean, efficient use

The Weld Shear Hand Pump is simple to set up and its hydraulically-assisted, manual operation makes it quick, clean, efficient and straightforward to use.

→ ADVANTAGES

- The Weld Shear Hand Pump's wide beams allow for shearing directly through the mould, preventing the need to remove it manually. This reduces the time taken for testing, saving time and money.
- A guide and rollers under the rail head guarantee a constant shearing thickness, increasing the accuracy of welding.
- The ability to make precise height and lateral adjustments makes the grinding process faster as the majority of the excess metal is removed during the shear. With the Weld Shear Hand Pump, there is no risk of damaging the rail.
- Because the hydraulic pump is integrated rather than plugged in, it saves time and effort on every weld.
- The machine is extremely versatile, suitable for all moulding processes and types of flat-bottom rails. It can also be used during a head wash repair.



→ COMPONENTS

1. Retractable handles
2. Integrated hand pump
3. High pressure cylinders
4. Strong bi-material blades (not included)
5. Lateral adjustment system
6. Height adjustment system

VI 2021-12-15

→ SPECIFICATIONS

Technical data	
Description	EPM2 Wide Hydraulic Shearing machine
Item number	11334004
Application	Specially designed for wide gap ATW process such as PLA68, WG68 and HWR (Head Wash Repair) Excluding switches and crossings
Shearing force	212 kN (21.5 tons)
Maximum hydraulic power	250 bar
Opening between blades	165 mm
Energy	Manual
Dimensions	1200 x 490 x 500 mm
Weight without blades (Blades not included)	56 kg

Accessories

11335018	Vignole pair of blades type 32
11335019	Vignole pair of blades type 36
11335024	Vignole pair of blades type 40
11335022	Vignole pair of blades type 45
11335023	Vignole pair of blades type 48

Standard compliance

- Machinery directive 2006/42/CE
- European norm NF EN 13977

→ LEARN MORE



www.pandrol.com