



Clipping Equipment

Mechanisation of rail
fastening installation

PANDROL

Partners in excellence

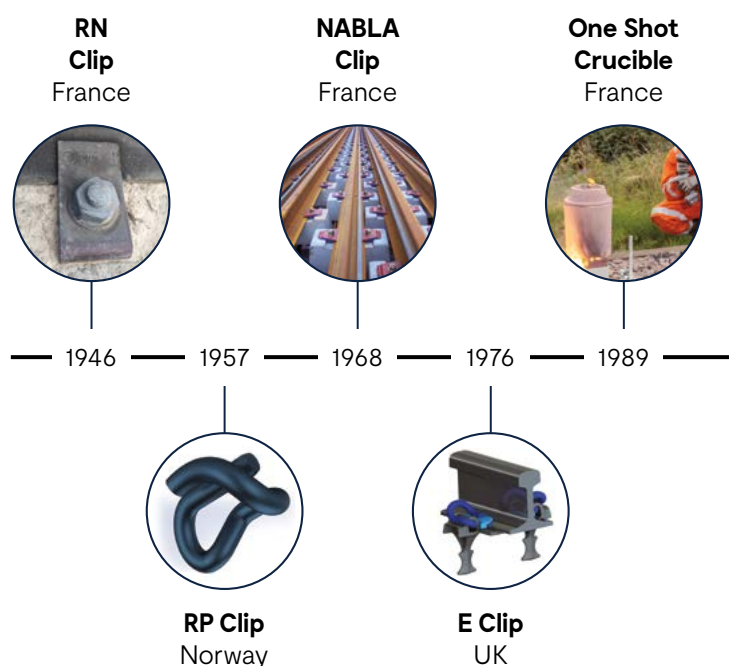


Partners in Excellence

Our Story

Part of the Delachaux Group, Pandrol is a business founded on a passion for innovation, and our unique heritage is still at the heart of how we do business today. Over 100 years of product development, engineering know-how, acquisitions and growth has enabled us to become a world leader and global employer with over 1700 team members across 40 locations.

In 2017, all the businesses within the rail division of the Delachaux Group were united under the single brand of Pandrol, including Railtech – specialist in welding equipment and electrification solutions –, Vortok – specialist in rail equipment –, Pandrol CDM Track, Rosenqvist Rail, Matweld, RSS and fastenings systems solution company Pandrol.



Clipping equipment

Pandrol presents its full range of next-generation Clip Drivers, designed to increase the speed and efficiency of clipping and fastenings on rail systems. These solutions for mechanizing the clipping & un-clipping help our customers to keep people off track and improve the safety of the workers.

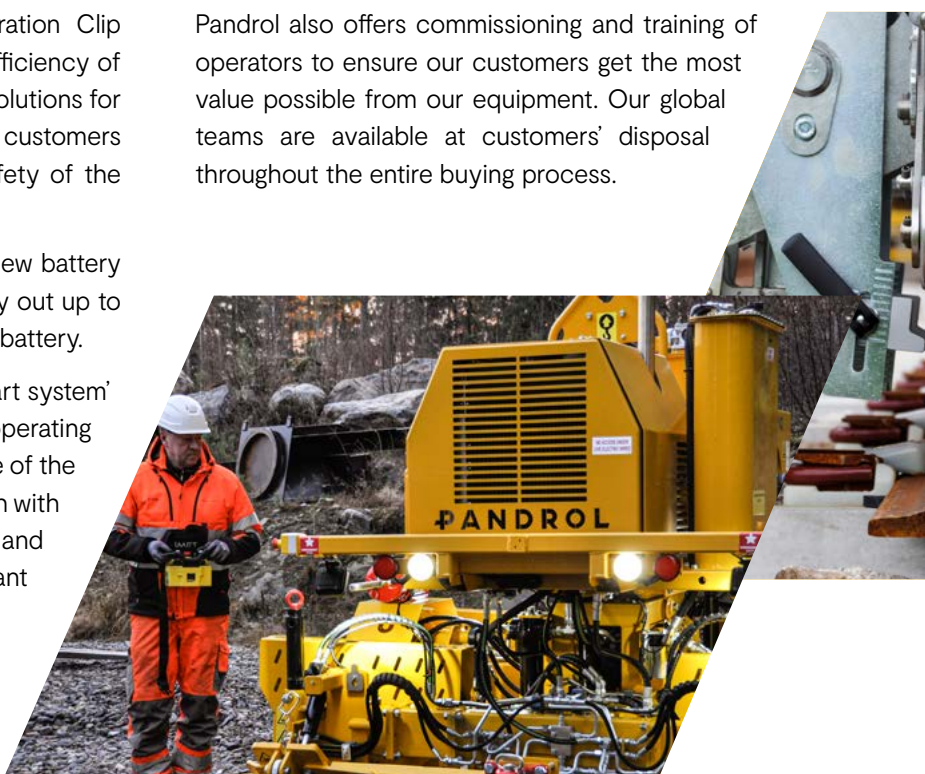
The range starts with the CD100 – where the new battery operated version gives the opportunity to carry out up to 300 clipping operations with one fully charged battery.

The recently launched IQ range features a 'smart system' to provide information on clips installed and operating hours, while also preventing any incorrect usage of the machine – there are three models available each with a different capacity: CD200IQ, the CD300IQ, and the CD400SPIQ, all benefitting from a significant upgrade on the first-generation models.

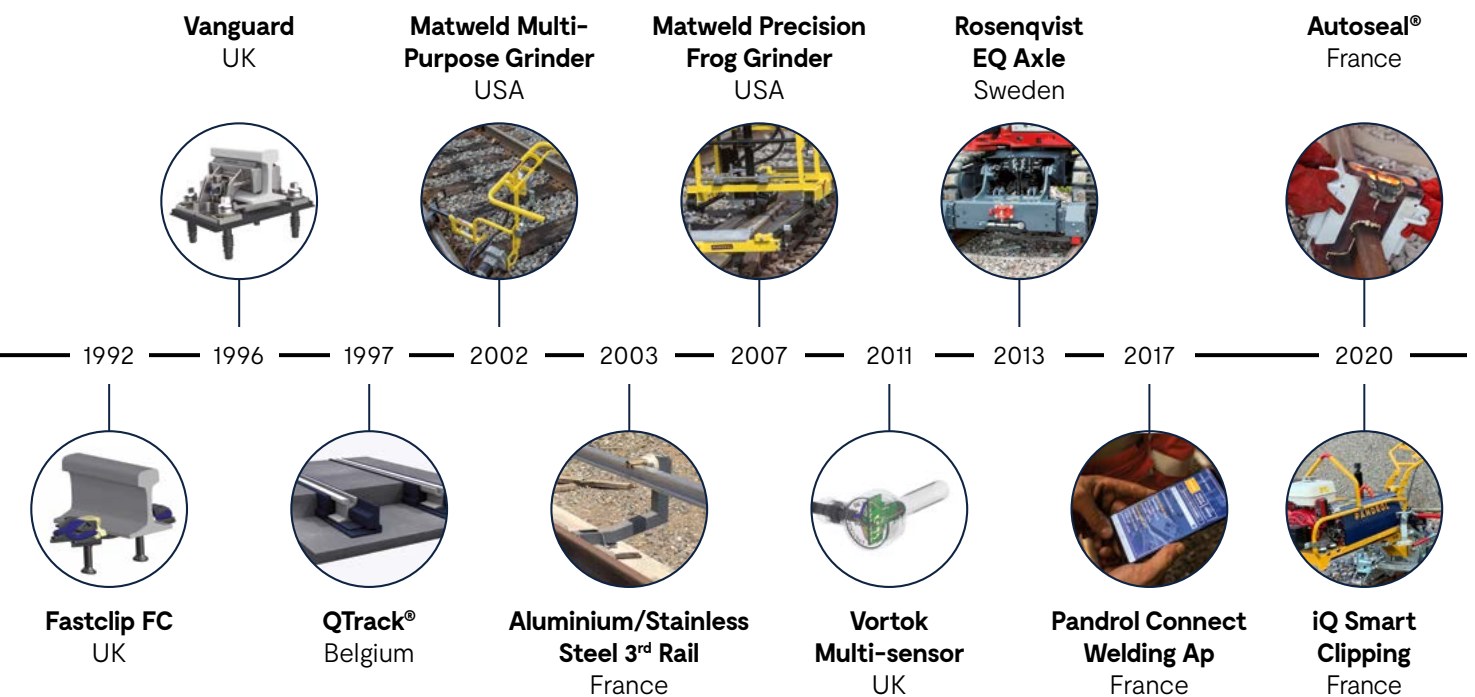
Pandrol also offers commissioning and training of operators to ensure our customers get the most value possible from our equipment. Our global teams are available at customers' disposal throughout the entire buying process.



pandrol.com



Pandrol defines the industry standard across rail fastening systems and aluminothermic welding. We've created rail infrastructure in more than 100 countries with our products and services extending to designing, developing and manufacturing equipment to make constructing and maintaining railways more efficient. That means we've experienced just about every situation, problem, question and solution before.



A complete end-to-end service







We are technicians, engineers, developers and designers who solve customers' complex problems using our unique history of innovation and an endless pursuit of new thinking. We support our customers at every stage of the process, from design and installation right through to operation, monitoring and maintenance.



Contents

CD100 B	6
CD100	8

Clip Driver CD200 IQ	10
Clip Driver CD300 IQ / CD300 IQ EC	12

	Model	Usage	Sleepers / min	Installing Clips					
				FC	FE	FCX	e-Clip	PR401	Offset clips
	CD100	Maintenance	Up to 10	Yes	Yes	Yes	No	No	No
	CD100 B	Maintenance	Up to 10	Yes	Yes	Yes	No	No	No
	CD200 iQ	Maintenance / New track	Up to 20 FC,FE,FCX Up to 10 (e-Clip)	Yes	Yes	Yes	Yes	Yes	Yes FC No E-clip
	CD300 iQ	Maintenance / New track	Up to 40 FC, FE, FCX Up to 20 e-clip	Yes	Yes	Yes	Yes	Yes	E-clips
	CD400	Intensive	Up to 40 FC, FE, FCX Up to 20 e-clip	Yes	Yes	Yes	Yes	Yes	E-clips
	CD400SP iQ	Intensive	Up to 25 FC,FE, FCX Up to 20 e-Clip	Yes	Yes	Yes	Yes	Yes	E-clips

iQ : intelligent control system

Clip Driver CD400	14
Clip Driver CD400SP IQ	16

Sleeper layers, Sleeper replacers, Auto Master	17
Sleeper grapple, Rail tongs, Rail trailers	18

Extraction / Declipping												
FC	FE	FCX	e-Clip	PR401	Offset clips	Track gauge	Power	Rail(s) clip(s) at the time	Movement	Lift low-lying sleepers	Weight	Dimensions
Yes	Yes	Yes	No	No	No	Not applicable	Thermic	One rail	Walk-behind machine	10 mm	18 kg (petrol unit) 41,5 kg (clipping) / 43,5 kg (declipping)	Length 1120 mm Width 625 mm Height 910 mm Wheels Ø85
Yes	Yes	Yes	No	No	No	Not applicable	Battery	One rail	Walk-behind machine	10 mm	18 kg (battery unit) 41,5 kg (clipping) / 43,5 kg (declipping)	Length 890 mm Width 650 mm Height 700 mm Wheels Ø85
Yes	Yes	Yes	Yes	No	Yes FC No E-clip	Adjustable from 1000 to 1600 mm (others on request)	Thermic	One rail	Walk-behind machine	50 mm	254 kg (Fasclip) / 272 kg (e-Clip)	Length 2100 mm Width 1980 mm Height 1050 mm Wheels Ø55
Yes	Yes	Yes	Yes	Yes	E-clips	1435 mm	Hydraulic	Both rail	Road-rail vehicle (RRV) attachment	90 mm	975 kg	Width 2250 mm Length 1730 mm Height 1030 mm Wheels Ø 125 mm
Yes	Yes	Yes	Yes	Yes	E-clips	1000, 1067, 1435, 1520, 1600 mm (others on request)	Hydraulic	Both rail	Road-rail vehicle (RRV) attachment	90 mm	1400 kg	Length 2500 mm Width 2100 mm Height 1030 mm Wheels Ø 250 mm
Yes	Yes	Yes	Yes	Yes	E-clips	1000, 1067, 1435, 1520, 1600 mm (others on request)	Thermic	Both rail	Walk-behind machine	90 mm	3075 kg	Length 3220 mm Height 1830 mm from top of rail Width 2290 mm Wheels Ø 250 mm

CD100 B

Adding Value

CD100 B is an emission-free portable clipping machine designed for quick and easy clipping and declipping of the Pandrol Fastclip range.



The CD100 B clipping machine is designed for clipping and declipping Pandrol Fastclips. Compact and lightweight, it is suitable for use by a single operator and can be easily carried onto site.

The CD100 B is composed of three parts: a power pack and two clipping tools. As part of its ergonomic design, a weight-bearing wheel runs along the rail, dramatically reducing the physical strain on the operator. Although optimised for smaller clipping and declipping applications, the CD100 B is versatile and can be coupled quickly and easily to other equipment. If required, it can lift sleepers up to 10mm.

Powered by battery, this emission-free clipping machine is suitable for use in tunnels and stations and in densely populated areas where working safely with low noise and clean air is a priority.

→ TECHNICAL FEATURES

Advanced battery technology

The CD100 B is equipped with a reliable lithium-ion battery, designed for high-power applications. Capable of hundreds of charges without any loss of power, the battery has a low self-discharge rate.

Modular design

Designed with a quick connect interface, the patented CD100 B comes in three modules: the power pack, the clipping tool and the declipping tool.

Made for Pandrol Fastclip

Compatible with Fastclip FC upto 1500 series of clips (15mm in diameter), Fastclip FE and FCX.

Compact

The powerful tool's small size means the CD100 B can be stored in the boot of a car and carried onto site by one person for quick intervention and reduced cost.

Up to 10 mm sleeper lift

This small but strong tool can lift a sleeper up to 10 mm when the rail is not in contact, to guarantee a perfect mounting.

Ergonomic features

The CD100 B is equipped with an adjustable handle and a weight-bearing wheel that runs along the rail to reduce physical strain on the operator.

→ ADVANTAGES /

- The CD100 B's compact, portable design means that it can be transported easily and used by a single operator, saving time and labour costs.
- The machine's ergonomic features, including adjustable handle, weight-bearing wheel and light weight, make it safer and more convenient for users.
- An environmentally-friendly, battery-powered tool with no exhaust smoke and reduced noise, the CD100 B makes a positive contribution to clean working environments.
- Because it is emission-free, it is suitable for use in tunnels, stations and densely populated areas.
- The CD100 B replaces the need for manual hand tools for small jobs, eliminating the risk of tools slipping and physical stress injuries.
- The tool has been designed to be extremely versatile. It can be coupled to other equipment and is strong enough to lift a sleeper up to 10mm.



→ COMPONENTS /

1. High-power lithium-ion battery power pack
2. Ergonomic weight bearing wheel
3. Interchangable clipping tool
4. Adjustable handle
5. Unclipping tool
6. Clipping tool



→ SPECIFICATIONS /

Technical Specification			
Equipment	CD100 Clipping Tool	CD100 Declipping Tool	CD100 B Power Unit
Code	110-0201	110-0058	6000617
Weight	23 kg	25 kg	18.5 kg
Height	390 mm	400 mm	400 mm
Length	580 mm	560 mm	480 mm
Width	210 mm	270 mm	260 mm
Max working force	33 kN	23 kN	N/A
Capacity	About 10 sleepers / min	About 10 sleepers / min	300 clipping operations
Battery capacity	N/A	N/A	6 Ah – 82 V

→ LEARN MORE



CD100



The CD100 clipping machine is designed for clipping and declipping Pandrol Fastclips. Compact and lightweight, it is suitable for use by a single operator and can be easily carried onto site.

The CD100 is composed of three parts: a power pack and two clipping tools. As part of its ergonomic design, a weight-bearing wheel runs along the rail, dramatically reducing the physical strain on the operator. Although optimised for smaller clipping and declipping applications, the CD100 is versatile and can be coupled quickly and easily to other equipment. If required, it can lift sleepers up to 10mm.

This version is also available powered by battery, is suitable for use in tunnels and stations and in densely populated areas where working safely with low noise and clean air is a priority.

→ TECHNICAL FEATURES

Modular design

Designed with a quick connect interface, the patented CD100 comes in three modules: the power pack, the clipping tool and the declipping tool.

Made for Pandrol Fastclip

Compatible with Fastclip FC upto 1500 series of clips (15mm in diameter), Fastclip FE and FCX.

Compact

The powerful tool's small size means the CD100 can be stored in the boot of a car and carried onto site by one person for quick intervention and reduced cost.

Up to 10 mm sleeper lift

This small but strong tool can lift a sleeper up to 10 mm when the rail is not in contact, to guarantee a perfect mounting.

Ergonomic features

The CD100 is equipped with an adjustable handle and a weight-bearing wheel that runs along the rail to reduce physical strain on the operator.

→ ADVANTAGES /

- The CD100's compact, portable design means that it can be transported easily and used by a single operator, saving time and labour costs.
- The machine's ergonomic features, including adjustable handle, weight-bearing wheel and light weight, make it safer and more convenient for users.
- The CD100 replaces the need for manual hand tools for small jobs, eliminating the risk of tools slipping and physical stress injuries.
- The tool has been designed to be extremely versatile. It can be coupled to other equipment and is strong enough to lift a sleeper up to 10mm.



→ COMPONENTS /

1. Power unit
2. Ergonomic weight bearing wheel
3. Interchangeable clipping tool
4. Adjustable handle
5. Unclipping tool FC
6. Clipping tool FC / FCX



→ SPECIFICATIONS /

Technical data			
Designation	CD100 Clipping Tool	CD100 Declipping Tool	CD100 Power Unit
Code	110-0201	110-0058	5014188
Weight	23 kg	25 kg	18 kg
Height	390 mm	400 mm	400 mm
Length	580 mm	560 mm	480 mm
Width	210 mm	270 mm	260 mm
Max working force	33 kN	23 kN	N/A
Capacity	About 10 sleepers / min	About 10 sleepers / min	N/A

Clip Driver CD200 IQ

Adding Value

Pandrol's first intelligent clipping machine, using an intuitive control system to simplify operation.



The Clip Driver CD200 IQ, the first machine in Pandrol's new IQ range, uses intelligent control systems to simplify operation. The new smart system can provide information on clips installed and number of operating hours, while also preventing incorrect use of the machine.

The modular, lightweight design of the CD200 IQ enables it to be lifted on and off track easily. Thanks to mechanical and hydraulic quick connectors, it is simple to change between the two clipping tools for Fastclip and e-Clip.

The CD200 IQ also has a patented built-in sleeper lift function, enabling the operator to lift low-lying sleepers of 50mm. It is powered using a new power pack and a Honda engine.

→ TECHNICAL FEATURES

Intelligent control system

The CD200 IQ has a new intuitive control system with a digital display that provides information (e.g. number of operating hours, clips installed).

Modular, lightweight design

The clip driver's modular, lightweight design means that it can be lifted on and off the track easily.

Mechanical and hydraulic connections

Mechanical and hydraulic quick connections are used to switch efficiently between the tools for Fastclip and e-Clip.

Clipping speed

The machine clips up to 20 sleepers per minute with Fastclip and up to 10 sleepers per minute with e-Clip.

Built-in sleeper lift function

Enables the CD200 IQ to lift low-lying sleepers of 50mm.

Engine

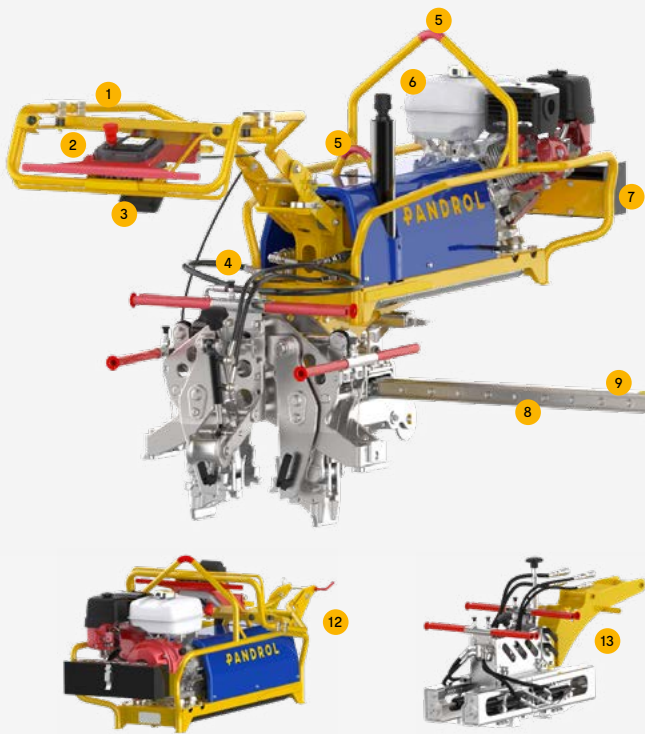
The clip driver is powered by a Honda petrol engine.

Safety

A fail-safe mechanical brake is available as an option.

→ ADVANTAGES

- The intelligent control system simplifies operations and prevents misuse of the machine.
- The control system logs data on the quantity of clips installed and number of operating hours, allowing the user to monitor their on-track efficiency.
- The CD200 IQ's modular design reduces the weight and lifting requirements for users, making it easier to set up on track.
- Mechanical and hydraulic quick connectors streamline the changeover between Fastclip and e-Clip tools, reducing downtime.



→ COMPONENTS

- 1. Height adjustable handlebar
- 2. Control panel
- 3. Working light
- 4. Mechanical and hydraulic quick release couplings
- 5. Lifting points
- 6. Main unit
- 7. Accessory box
- 8. Slide bar
- 9. Trolley unit
- 10. Latch for slide carriage, handle
- 11. Wheel bracket
- 12. Powerpack
- 13. E-clip clipping and unclipping module
- 14. Fastclip FC/FE clipping and unclipping module
- 15. Trolley

→ SPECIFICATIONS

Technical Specification	
Length	2100 mm
Width	1980 mm
Height	1050 mm
Weight power pack	103 kg
Weight trolley	54 kg
Weight tool, fastclip	97 kg
Weight tool, e-Clip	115 kg

→ LEARN MORE



Clip Driver CD300 IQ / CD300 IQ EC



Clip Driver CD300 IQ is a high-production clipping machine designed to install Pandrol Fastclip FC and FE fastening systems. Clip Driver CD300 IQ EC is a version specially designed for e-Clip fastening system.

The machine's design is based on the proven technology of Pandrol's Clip Driver CD400, with enhancements adding to its performance. Tools are folded up when not in use, eliminating the risk of collision with shoulders, fishplates and clips in the track. A newly designed intelligent control system monitors the machine's operation and actively controls the clipping operation.

Clip Drivers CD300 IQ and CD300 IQ EC has a quick adjustment for various rail heights and guiding rollers ensure it is centred on the track. Its low weight makes it suitable for use on smaller road-rail machines.

→ TECHNICAL FEATURES

Intuitive control system

Clip Drivers have a new intelligent control system with a display. It is easy to understand and available in different languages. It stores running data for follow-up and shows error codes.

Automated clipping speed

The control system measures the speed of the machine on the track and automatically adjusts the start of the clipping operation to get a perfect result and avoid damage to the machine and/or the track.

Raised tools

Tools are raised when not in use, eliminating the risk of collision with shoulders, fishplates and ballast. It is no longer necessary to remove the clipping pads on the tools when it is not used, which saves time in the track.

Guiding rollers

Guiding rollers ensure the Clip Driver is centred on the track.

Rapid height adjustment

The machine's height can be adjusted quickly and easily for various rail types by moving the position of a pin.

Lightweight design

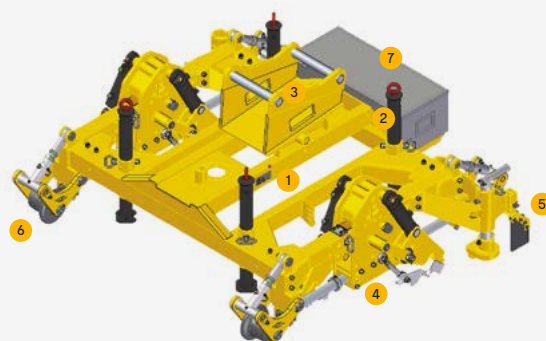
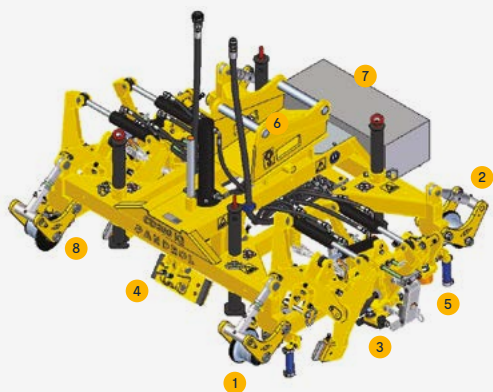
Clip Drivers weigh less than 1000 kg and can be used with smaller road-rail machines from 6 tonnes upwards.

Proven technology

The machine's design is based on the same proven technology as Clip Driver CD400 (clipping tools and sleeper lift). As a result, it is robust and reliable and has reduced need for spare parts.

→ ADVANTAGES

- Clip Drivers intelligent control system makes the machine easy and intuitive to use. The error codes enable faster fault-finding.
- Automated control of the start of the clipping operation prevents faulty installation and damage to the machine and track.
- The machine's light weight makes it easier to lift on and off the track and means that it can be used with a wide range of road-rail machines.
- Risk of damage to the machine and track is further reduced because tools are raised when not in use. This also saves time.
- Quick height adjustment saves a great deal of time, particularly when using the machine on different rails.
- Clip Drivers are reliable and need few spare parts, making it a cost-effective option.



→ COMPONENTS CD300 IQ

- | | |
|-------------------------------|------------------------------|
| 1. Automatic system | 5. Guiding rollers |
| 2. Quick adjustment of height | 6. Machine interface bracket |
| 3. Foldable Fastclip tools | 7. Toolbox |
| 4. Sleeper lift | 8. Supporting legs |

→ COMPONENTS CD300 IQ EC

- | | |
|------------------------------|----------------|
| 1. Identification plate | 5. Clipcatcher |
| 2. Supporting legs | 6. Railwheel |
| 3. Machine interface bracket | 7. Toolbox |
| 4. Clipping/De-clipping tool | |

→ SPECIFICATIONS

Technical data		
Description	CD300 IQ	CD300 IQ EC
Item number	5014400	5014990
Clip	FC and FE	e-Clip and PR clip
Clipping	4 clips per cycle	4 clips per cycle
De-clipping	4 clips per cycle	2 clips per cycle
Capacity	Up to 40 sleepers/min	Up to 20 sleepers/min
Width	2250 mm	2250 mm
Length	1730 mm	1730 mm
Height	1030 mm	1030 mm
Weight	990 kg	840 kg
Wheels	Ø 125 mm	Ø 125 mm
Track gauge	1435 mm	1435 mm

→ ACCESSORIES

5014482	S45 bracket
5014954	S50 bracket
5015480	S60 bracket
On demand	Brackets for lift with forks
5015528	Bluetooth option (only fastclip)
On demand	Remote joystick

→ LEARN MORE



Clip Driver CD400



Pandrol's Clip Driver CD400 is a robust, high-performance clipping machine that clips and unclips Pandrol Fastclips and e-Clips. When fitted with proximity sensors, the CD400 fastens clips automatically, enabling additional productivity and security.

Attached to a railroad vehicle (RRV) and equipped with a sleeper lift, the Clip Driver CD400 can be used to raise low ties for new construction (Fastclip only), harnessing hydraulic power from the RRV. The easily adjustable attachment has a durable frame structure that is fitted with high-quality bearings to ensure longevity and maintain performance levels.

→ TECHNICAL FEATURES

Versatility

The Clip Driver CD400 fits tools for Pandrol e-Clip, Fastclip, Fastclip FE and Deenik and is adjustable for most common track gauges.

Automatic functions

With the option of being fitted with proximity sensors, the CD400 has an intuitive control panel that can be used to fasten clips automatically.

Guiding rollers

Guiding rollers centre the machine in work mode for impressive precision and productivity. Up to 40 Fastclip ties can be clipped per minute.

Attachment to RRV

The CD400 can be connected to a 13-ton carrier machine using an easily adjustable attachment. It then draws on hydraulic power from the RRV to lift sleepers.

Safety features

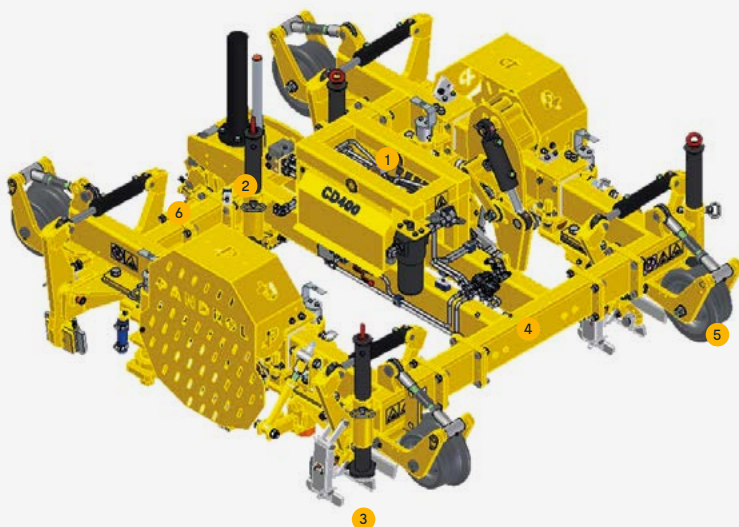
The Clip Driver has covers and mechanical stop arms to prevent pinch injuries and clips detaching.

Robust construction

For extra-long life, the Clip Driver CD400 has a durable frame structure and is equipped with high-quality, tapered roller bearings.

→ ADVANTAGES

- Automation options and a user-friendly remote control panel ensure the machine is simple and intuitive to use.
- The CD400 is extremely efficient. With its guiding roller ensuring precision and productivity, the machine can clip up to 40 ties per minute.
- Covers and mechanical stop arms eliminate the risk of pinch injuries and prevent clips flying off, increasing the safety of operators.
- The machine is constructed from high-quality parts, reducing the requirement for maintenance, increasing longevity and saving time and money over the course of its life.
- Suitable for use with Pandrol e-Clip, Fastclip, Fastclip FE and Deenik, and adjustable for most common track gauges, the Clip Driver CD400 offers a versatile clipping option.
- The Clip Driver CD400 is a reliable, robust machine that gets the work done.



→ COMPONENTS

1. Machine bracket
2. Support legs
3. Clipping Tools
4. Frame
5. Wheel
6. Sleeper lift

→ SPECIFICATIONS

Technical data	
Designation	Clip Driver CD400 (Basic)
Item number	21980401
Clipping	FE / FC / e-Clip / PR401
Clip offset	Yes
Capacity	Up to 40 sleepers per minute
Movement	Railroad vehicle attachment
Power	Hydraulic
Track gauge	1,435mm
Sleeper lift	90mm
Wheels	Ø 250mm (9.8in)
Dimensions (l x w x h)	2,500mm (98.3in) x 2,100mm (82.7in) x 1,030mm (9.8in)
Weight	1,400kg (3,087lb), with tools for clipping and declipping of Pandrol Fastclip and sleeper lift

Approved by:

- NWR
- SNCF



→ LEARN MORE

→ ACCESSORIES

5001021S	Clipping tools e-Clips standard
5002484S	Safety cage
5006362S	Safety cage for offset tool
5002775S	Declipping tool e-Clips
5004661S	Clipping/declipping tool offset clips
5007295	e-Clip shoe offset
5003290	e-Clip shoe standard
5003280	e-Clip shoe
5006717	Spacer 56 mm e-Clip offset/standard
5003090	PR 400 series
5003248	S45 machine bracket
5003463	S60 machine bracket
On request	Universal bracket
5006510	For fitting the machine in a boom or equivalent

Clip Driver CD400SP IQ



The CD400SP IQ is our second generation walk-behind clipping machine, following the original reliable CD400SP.

This robust and efficient self-propelled machine now has an EU Stage 5 diesel engine from Hatz and a new intelligent control system. The CD400SP IQ logs the machine's operational history so the owner can see the running hours and number of clips installed, whilst also monitoring the error log. The machine installs 4 clips simultaneously across two rails and has a sleeper lift function for new construction projects. The maneuvering unit is now cordless to be more flexible for the operator.

→ TECHNICAL FEATURES

Compatible with a broad range of Pandrol clips

Suitable for use with the Pandrol Fastclip, the Pandrol e-Clip, and Pandrol PR-Clips (PR400 Series) there are a wide range of options for automatic clipping.

Whisper quiet operation

Operating at 78.5 decibels (at 1 metre) at full throttle, the CD400SP IQ is easily drowned out by ambient traffic noise (80Db).

Pandrol-quality systems

A reliable and robust machine that gets the work done. With Pandrol quality machinery, a reduced requirement for maintenance saves you time and money.

Transport mode

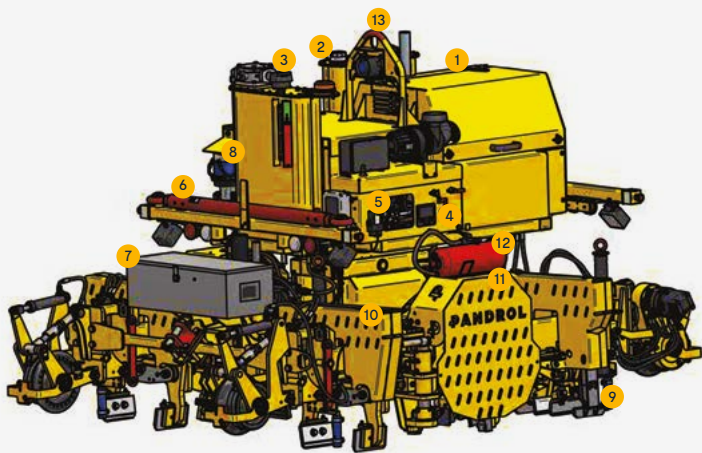
The machine can be lifted up into a transport mode to prevent collision with sleepers and shoulders.

Hydraulic system

Load sensing system that reduces the oil temperature and improves the life cycle of components.

→ ADVANTAGES

- The EU Stage 5 diesel engine increases fuel efficiency, reduces emissions, and dramatically reduces noise.
- Proximity sensors and automatic clipping function simplify the operation and help the operator to optimize the production rate.
- Pandrol's guiding rollers centre the machine in work mode for impressively precise work.
- Uses a wireless control panel.



→ COMPONENTS

- | | |
|----------------------------|---|
| 1. Motor / engine | 8. Emergency operation pump |
| 2. Diesel fuel tank | 9. De-clipping tool Fastclip |
| 3. Hydraulic oil tank | 10. Clipping tool Fastclip |
| 4. Display | 11. E-clip module with de-clipping tool |
| 5. Manual operation levers | 12. Fire extinguisher (option) |
| 6. Tow bar | 13. Lifting point |
| 7. Toolbox | |

→ OPERATION



→ LEARN MORE



→ SPECIFICATIONS

Technical Specification	
Description	Clip Driver CD400SP IQ
Item number	014700
Length	3220 mm
Height	From top of rail 1830 mm - work Total when parked alongside track w2110 mm - transport
Width	2290 mm
Weight	3075 kg total weight with tools for clipping and declipping Pandrol Fastclip, sleeper lift and guiding rollers.
Track gauge	1000 mm, 1067 mm, 1435 mm, 1520 mm, 1600 mm (others on request)
Rail wheels U/C	S1002 - profile Ø 250 mm
Clipping / Declipping	4 clips per cycle
Sleeper lift	Grip force, sleeper 1200 - 12000 Kp Lifting force 350 - 3500 Kp Lifts low laying sleepers of 90 mm
Electrical system	24 V
Hydraulic system	LS system Maximum 200 bar
Engine	Hatz diesel type 3H5OT - 70 litres tank
Hydraulic tank	70 litres
Braking distance	Max 5 m
Noise at 1 meter	Full throttle front 78.5 dB (A), Full throttle right 77 dB (A), Full throttle rear 75 dB (A), Full throttle left 6 dB (A)

On-track equipment

Sleeper layers

Sleeper layers SL400 to SL850 are carrier-mounted attachment to achieve fast and accurate sleeper handling, with an easily adjustable tool designed to fit most kinds of sleepers. The systems can handle simultaneously four sleepers, with the SL400, to eight sleepers, with the SL850.



Sleeper replacers

Sleeper Replacer SB60 is a sleeper replacement attachment designed to provide safe and efficient replacement of sleepers, with an innovative tilt and rotate functions which allow sleepers to be changed from both the middle and side of the track. The SB40 is a lightweight version providing the same cost-effective and safety-orientated solution, designed specifically for smaller carrier machines.



Auto Master

Developed as an accessory for the Sleeper Replacer SB40 and SB60, Auto Master enables Pandrol Fastclips or Pandrol FE to be fitted automatically, ensuring a higher degree of site safety by reducing the amount of staff on track. This self centering machine can handle the normal varieties of rails and sleepers.



Sleeper grapple

Designed to efficiently handle sleepers and rail sections without damaging them, Sleeper Grapple SG60 is an optimal tool for heavy-lifting track procedures. The SG60 is also suitable for use on bridges or other places where there is no ballast. Based on the reliable SB60 Sleeper Replacer, the SG60 has a time-tested track record.



Rail tongs

Rail Tongs RG2500, RG3000 and RG4800 are used to install and maintain continuous welded rail (CWR). The Rail Tongs clip automatically onto the rail being moved and are designed to be fastened to all types of hauling and rail removal equipment. They include a towing support welded on to the side, enables rails to be towed.



Rail trailers

Rail Trailer RT3230 and RT3235 are designed for transport of material and equipment between different work sites on railway. They are manufactured to be towed by a railroad vehicle with an accompanying tow bar and a parking/emergency brake for a safe method of moving goods between work locations. The Rail Trailer RT3235 has been engineered as a lighter weight alternative to the RT3230.



Partners in excellence

Contact your local team to discuss your requirements

[**pandrol.com/contact**](https://pandrol.com/contact)

