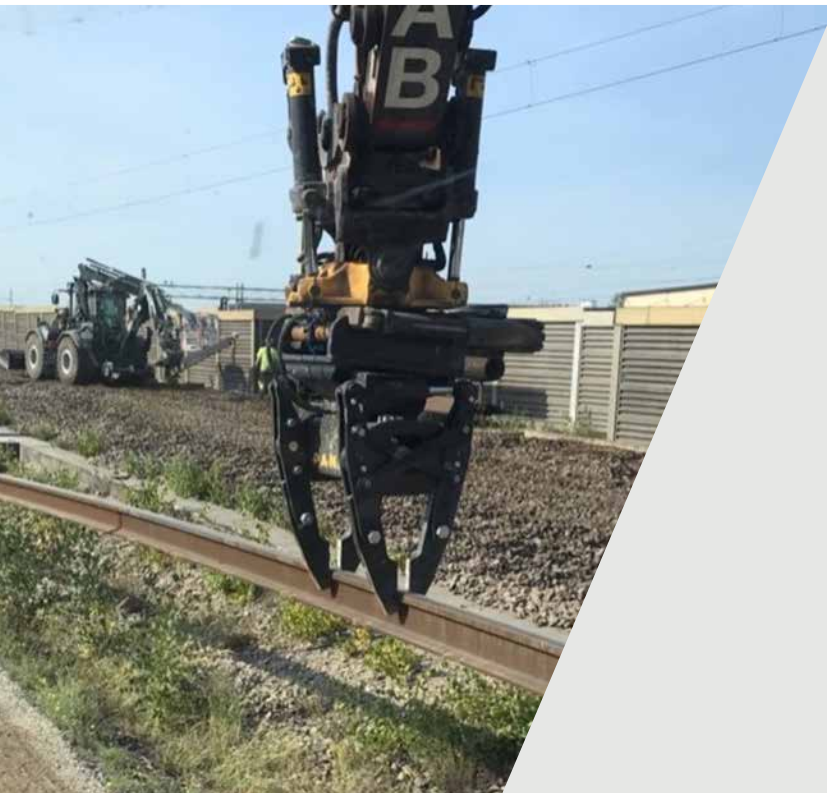


Sleeper Grabber SG60

On-Track Equipment

Adding Value

Capable of handling both sleepers and rail, the Sleeper Grabber improves installation efficiency and sleeper reuse.



Pandrol's Sleeper Grabber SG60 is a high-performance tool for heavy-lifting track procedures.

The Sleeper Grabber has been specifically developed to handle sleepers and rail sections efficiently. By avoiding damage to sleepers, it facilitates their reuse.

The Sleeper Grabber's design is based on Pandrol's Sleeper Replacer SB60, which has a time-tested track record for reliability.

→ TECHNICAL FEATURES

Fast operation

The Sleeper Grabber SG60 can handle both sleepers and rail in the same set-up, increasing productivity.

Interchangeable arms

Interchangeable grab arms enable the SG60 to accommodate different types of sleepers.

Secure grip

The machine's secure grip minimises the risk of damage to sleepers during maintenance, enabling their reuse.

Hydraulics

The Sleeper Grabber SG60 requires one double-acting hydraulics outlet (two hoses).

Safety features

The Sleeper Grabber has been designed with safety in mind – workers do not have to put their hands near the sleepers/grip.

→ ADVANTAGES /

- The Sleeper Grabber SG60 streamlines the complex sleeper handling procedure, lifting both sleepers and rail sections.
- Secure and gentle handling of sleepers means more can be reused during maintenance, reducing wast.
- Track workers' safety is increased as they do not need to put their hands near the sleepers/grip when using the Sleeper Grabber SG60.
- Based on Pandrol's time-tested Sleeper Replacer SB60, the Sleeper Grabber is a reliable, cost-effective option.



→ COMPONENTS /

- 1. Machine bracket
- 2. Gripping cylinder
- 3. Gripping arm

→ SPECIFICATIONS /

Technical data		
Description	SG60	SG60
Item number	5012836	5014872
Machine bracket	Type S45	Type S60
Weight	305kg	305kg
Height	1128mm	1128mm
Width	540mm	540mm
Hydraulics required	One double-acting outlet (two hoses)	One double-acting outlet (two hoses)
Clamp force	1400kg	1400kg
Rail type	European standard 60kg/m, 50kg/m	European standard 60kg/m, 50kg/m

