

PANDROL

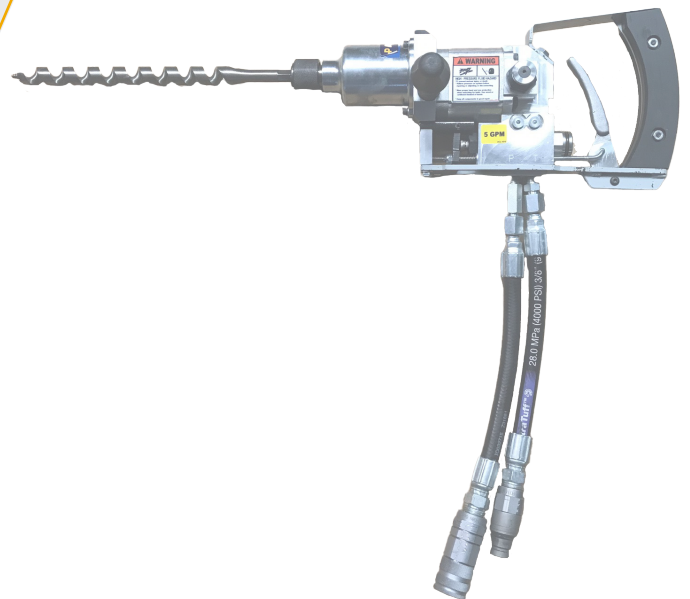


1/2" Hydraulic Drill / Impact Wrench

MODEL 04500

MODEL 04525

OPERATION AND MAINTENANCE
MANUAL



ENG_OMM_DRILL_IMPACT_WRENCH_P01

16th November 2021

Partners in excellence

Thank you for choosing ½” Hydraulic Drill / Impact Wrench!

You are now the owner of a quality product from Pandrol.

1. Preface

This manual aims to help you get to know your new ½” Hydraulic Drill / Impact Wrench, to use it in the best way and to maintain it properly for a long lifetime. It also presents important safety regulations and warnings.

The manual is intended for people who handle and operate the machine. It is originally written in English and translated into the local language by Pandrol.

Pandrol reserves the right to change specifications, equipment, instructions and maintenance guidelines without prior notice.

The manual contains instructions about the following topics:

1. Installation
2. Operation
3. Safety features and warnings
4. Maintenance and troubleshooting

(1) refers to a component in a figure/illustration.

IMPORTANT

This manual contains ordered actions, e.g.

1. Do this
2. ...and then this...
3. ...and finally this

These actions **must** be done in the numerical order presented.

2. Revision

Revision	Date	Comments
P01	2021-11-16	New Manual

Table of Contents

1.	Preface	2
2.	Revision	2
3.	Safety Information	4
3.1.	General	4
3.2.	Safety actions	4
3.3.	Personal/Safety equipment	5
3.4.	Safety precautions	5
3.5.	Qualified personnel	6
3.5.	Important safety notice	6
4.	Summary	7
5.	Operation	8
5.1.	Cold weather operation	9
6.	Trouble shooting guide	10
7.	Review of hydraulic principles	11
7.1.	Hydraulic formulas	11
7.2.	Back pressure	11
8.	Maintenance	12
8.1.	General	12
8.2.	Warning labels and information symbols	13
9.	Limited warranty	14
9.1.	Exclusions to limited warranty	14
9.2.	Limitation of liability	14
10.	Customer information	15
11.	Assembly	17
11.1.	Parts diagram	17
11.2.	Parts list	18
11.3.	Parts diagram	19
11.4.	Parts list	20
12.	Disclaimer	21
13.	Contact	21
14.	Recycling and Environment	21

3. Safety Information



3.1. General

- Tool operators and maintenance personnel must always comply with the safety precautions given in this manual, and with all stickers and tags attached to the tool and hoses.
- All safety precautions are given for your safety. Read to understand and follow all safety, maintenance and operation instructions before you use or maintain the tool.
- Review the manual daily before using the tool.
- Follow all safety guidelines given you by your supervisor. Do not use the tool if you have any questions about the operation, safety or maintenance of this tool . Failure to follow these instructions can result in personal injury or equipment damage.
- Pandrol has no control over the tool use or operation once it leaves the plant. Pandrol has no control over operator or maintainer selection. The customer must assume responsibility for the tool suitability for a particular function.
- During use of the tool, good judgement must be used to work safely and efficiently without endangering themselves or bystanders.
- Understanding of the operation and maintenance manual is essential for anyone using or maintaining the tool.
- Warnings and safety precautions described in this document shall only be considered as a minimum. National conditions, standards and regulations override conditions, standards and regulations described in this document.
- Work with the machine is only to be carried out by qualified personnel, well-informed and educated in general railway workmanship and specifically in the conditions, standards and regulations on specific rail track.
- The machine may only be used for its specified purpose.
- Any adjustments or service on the machine is only allowed to be done by qualified personnel that have read and understood this manual and have had training and information from Pandrol.

3.2. Safety actions

- Read and understand all safety regulations and warnings before installation, operating or performing maintenance on this machine.
- Do not operate the tool until you have been thoroughly and properly trained or under the supervision of an instructor.
- Check power source daily to determine if correct flow and pressure are available. Never exceed flows or pressures for the tool being used. Personal injury or damage to the tool can result.
- Operators must clear the work area of non-essential personnel. Flying debris can cause serious injury.
- The operator must be familiar with all prohibited work areas such as unsafe grades, poor footing areas and overhead hazards.
- Use standards and regulations, accident prevention regulations and regulations concerning special ambient conditions (e.g. areas potentially endangered by explosive materials, heavy pollution or corrosive influences).
- Maintain balance and proper footing at all times. Never overreach to the extent that a broken part or sudden movement of the tool can cause you to lose your balance and fall, or cause injury to your self or someone else.

- Do not operate the tool at excessive fluid temperatures operator discomfort and potential burns can result at high oil temperatures.
- Do not clean inspect or repair the tool while connected to the power source. Accidental engagement of the tool can cause serious personal injury.
- Oil injection hazard exists with this tool. Oil injection is a condition where hydraulic oil is injected under the skin from pressure in the line. Always wear gloves and repair any leaks immediately. Never carry a tool by the hoses.
- Do not use damaged equipment. Immediately replace any damaged hoses, fittings, or other components showing wire braid, nicks, cuts, damage or abrasions. Failure to do so may result in equipment damage and / or personal injury or death.
- Clean up any oil or fluid spills immediately.

3.3. Personal/Safety equipment

- Never wear loose clothing that can get entangled in the working parts of the tools or be careless with hands, feet or other body parts around the working parts of the tools. Hydraulic tools exert high torque and force and can cause serious injury or death if improperly used.
- When working near electrical conductors, always assume that the conductors are energized and that hoses and clothing can conduct harmful electricity. Use hoses labeled and certified as nonconductive.
- Always wear safety equipment such as oil injection resistant work gloves, safety glasses, safety boots, ear protection and other safety apparel dictated by your supervisor applicable for the job you are doing and the tool you are using.
- The use of an compressed air, which must be less than 8 BAR (116 PSI), to blow parts clean or to blow them dry after being cleaned with a solvent will cause particles of dirt and/or droplets of the cleaning solvent to be airborne. These conditions may cause skin and/or eye irritation. When using an air jet do not direct it toward another person. Improper use of air jet could result in bodily injury.

3.4. Safety precautions

- Always wear protective equipment such as gloves, safety glasses, ear protection and safety shoes.
- Do not wear clothing which may become entangled in the tool.
- Always keep work area free of tools or any other objects which may impair sound footing.
- Caution - oil injection hazard exists with this tool. Oil injection is a condition where the hydraulic oil is forced under the skin through pressure in the line. Always wear gloves and repair leaks immediately.
- Do not carry the tool by the pigtail hoses.
- Do not over torque track and frog bolts.
- Do not use defective sockets or those not manufactured for impact wrenches.
- Do not attempt to loosen locked up wrench with any hand tool. Disconnect from power source and then repair wrench.
- Use a socket retaining ring to keep socket on the anvil.

3.5. Qualified personnel

The machine is only to be used by trained personnel, thoroughly familiar with and trained in general railway workmanship. The equipment should be operated according to the conditions and standard regulations applying to the track they are working on.

The equipment must be serviced, maintained, or in any way modified only by trained personnel, who are familiar with the Operation & Maintenance Manual and have received training and information from Pandrol.

In order to avoid personal injury and/or material damage, everyone involved with assembling, starting-up or overhaul must possess relevant knowledge of the equipment, its use, maintenance requirements and procedures.

3.6. Important safety notice

You must wear eye protection. All hammer operations require eye protection for both the user of the tool, and by others who may be exposed to the flying particles. The occupational safety and health administration (osha) is charged to enforce the mandated code of federal regulations governing the use of eye protection during hammering operations

- Never use a modified, damaged, welded, abused, or worn hammer accessory tool.
- Use accessory tool only with the hydraulic tool it is designed for.
- Never strike accessory with any hand held instrument and be careful during transport and movement not to strike the tool against another hardened surface.
- Make sure that the accessory is properly secured with the designed retainer. The retainer should never be used if it is damaged or worn.
- Do not come in physical contact with the working end of an accessory during operation of the hammer. Always wear safety boots and apparel during hammering operations.
- Inspect shanks and adapters daily and replace if any indications of fatigue or wear are found.
- Never lean on tool or use it for prying.

4. Summary

The Pandrol Impact Drill/Wrench is designed to offer the operator superior torque handling capabilities under the most adverse conditions. Operators will appreciate the lightweight and ergonomic design.

The 04500D Impact Drill/Wrench is equipped with a 7/16" quick change chuck for drilling and a 1/2" square drive adapter to accept a variety of 1/2" impact sockets. The 04525 drill is equipped with a 5/8" keyed chuck for all your drilling needs.



Fig 1.

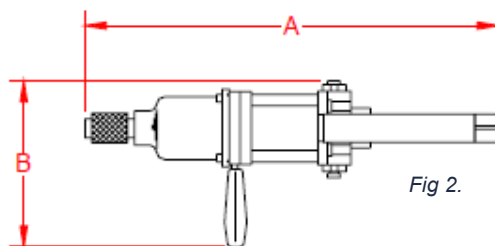


Fig 2.

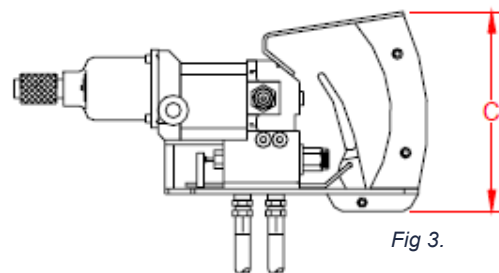


Fig 3.

Flow	Pressure	Dimensions	Weight
5GPM (19 LPM)	2000 PSI (140 BAR)	A - 10" (25.4 cm) B - 7" (17.78 cm) C - 7" (17.78 cm)	11 lbs (4.9 kg)

Accessories:

- 01743 - Counter bore 1-1/2"
- 01750 - Counter bore 2 -9/16"
- 01751 - Counter bore 3"
- 01774 - 7/16" X 1/2" auger bit
- 01783 - 7/16" X 18 auger bit
- 01775 - 1/2" X 12" auger bit
- 01782 - 9/16" X 18" auger bit
- 01777 - 11/16" X 12" auger bit
- 01781 - 11/16" X 18" auger bit
- 01795 - 5/8" X 18" auger bit

5. Operation

- With the power source in the "OFF" position. Connect the hoses. Do not drag the service hose by pulling with the tool. Loop the service hose in the work area in such a way to relieve stress on the hose and quick disconnect fittings while working. Be aware of hose locations at all times.
- Connect the tool to the power source.
- Turn the power source to the "ON" position to supply 5 GPM to the impact wrench.
- To tighten bolts, push the rotation valve (located on the right rear of impact wrench) "in" and rotate clockwise to lock in place. To loosen bolt, push valve "in" slightly and rotate counterclockwise to spring out.
- Pull the trigger to activate the impact wrench.
- Never operate the wrench on any higher flow than 5 GPM. The tool is designed to accept only the recommended 5 GPM and will malfunction and overheat the oil

5.1. Cold weather operation

Hydraulic system performance is affected when the temperature drops below 50°F. Therefore, measures should be taken to pre-warm tools and fluids before operating.



NOTE!

- **Refer to operating procedures of this manual before starting**

6. Trouble shooting guide

Problem	Remedy
Impact wrench overheats	Operate wrench on 5 GPM
Impact wrench spins but won't impact	Inspect front end for broken hammer pins or other broken parts
Impact wrench only works in one direction	Check front end for broken parts Check reversing valve for bent stem or trash on one or more valve parts
Impact wrench works slow and has low power	Check that torque adjustment valve is screwed in and not adjusted all the way out Check that flow is 5 GPM and system pressure is set at 2000 PSI
Trigger sticks	Check for dirt or clearance in trigger housing • check for reverse flow (pigtailed or qd's recently changed) Check backpressure on return line (at tool return should be 150 PSI or less)
Hydraulic oil running out of front end	Replace front shaft seal using part no. 01612 Shaft seal kit

7. Review of hydraulic principles

Tool circuit

7.1. Hydraulic formulas

GPM =

$$\frac{\text{CID X RPM}}{231}$$

HP =

$$\frac{\text{GPM X PSI}}{1714 (.85)}$$

Example: HP required to deliver 10 GPM at 1500 PSI.

$$\frac{10 \text{ GPM X } 1500 \text{ PSI}}{1456.9}$$

$$= \frac{15000}{1456.9} = 10.3 \text{ HP}$$

(subtract back pressure for tool HP)

Estimated HP delivered by pump or used by tool

	PSI					
GPM	500	1000	1500	2000	2500	3000
3	1.03	2.06	3.09	4.12	5.15	6.18
5	1.72	3.43	5.15	6.86	8.58	10.30
10	3.43	6.86	10.30	13.70	17.20	20.60
15	5.15	10.30	15.40	20.60	25.70	30.90

7.2. Back pressure

Back pressure measured at the tool return port must not exceed the manufacturers back pressure rating. Most manufacturers list the maximum back pressure for their hydraulic tools at 250 PSI. Back pressure measured on the return side of the tool is the force required to get the oil back to the tank. In almost all cases the lower the back pressure the better the tool performance. First, the back pressure is subtracted from the maximum tool pressure to arrive at a maximum tool operating pressure. For example, tools with 2000 PSI operating pressure are installed on a system with 250 PSI back pressure. This leaves 1750 PSI as a maximum tool pressure. Imagine a system with 500 PSI back pressure. 2000 Minus 500 PSI back pressure leaves only 1500 PSI for the tool. Second, tools are designed for pressure to build on the pressure side of the tool. If too much pressure builds on the return side, not only is performance effected, but seals may blow. This is why it is very important to direct the flow into the tool correctly. Reversing the hoses to test may result in blown seals, damage to the tool, and personal injury.

8. Maintenance

8.1. General

Maintenance and overhaul is to be carried out by qualified personnel only
Warranty is based on parts and spares delivered by Pandrol.

Check tools DAILY for proper operation, leaks, or damage.

Inspect hoses DAILY. Replace cut, burned, or otherwise damaged hoses.

Keep quick disconnect couplers clean and lubricated.

Use hydraulic fluids that comply with HTMA Specification 5.7, The hydraulic fluid should have a viscosity between 100 and 400 SSU (20-82 centistokes) at the maximum and minimum expected operating temperatures. Petroleum based hydraulic fluids with anti-wear properties and a viscosity index of over 140 work for a wide range of operating conditions.

The following oils meet HTMA Specification 5.7

AMOCO RYKON MV
 SUNVIS 706
 CHEVRON EP-MV

CITGO A/W ALL TEMP
 MOBIL D.T.E. 13
 TEXACO "RANDO" HDAZ

Other fluids that meet or exceed this specification can be used.

*** See cold weather operation hydraulic oil note.**

Have tool inspected, at least annually, by Pandrol or a Pandrol qualified service representative to determine if tool is in need of safety changes or worn part replacement.

Contact Pandrol on a periodic basis, at least annually, for service Bulletins, safety notices, or other important information pertaining to this tool.



WARNING!

- All adjustments work, overhaul and service must take place with the machine turned off. Failure to do so could lead to fatal injury.**
- It is of great importance that qualified personnel accomplish all service and overhaul**

8.2. Warning labels and information symbols

Below are examples of warning labels and information symbols on the machine. If any of these labels become damaged or lost, they are to be replaced with new original warning labels that are available from Pandrol.



5 GPM

9. Limited warranty

Pandrol, INC warrants to the original purchase of this product that the product will be free from defects in material and workmanship for the period of one (1) year after the delivery of such product to the customer. Other equipment and parts used, but not manufactured by Pandrol are covered directly by the warranty of the manufacturer of those products. Proof of purchase must be documented including reference to a serial number located on each tool. The purchaser's only remedies under this limited warranty shall be limited at Pandrol's sole option to the following: repair, replacement or refund of the purchase price of the defective products. Each of these remedies requires timely notification of the defect in the product and substantiation that the product has been properly stored, maintained and used. Pandrol's obligations hereunder extend only to the purchaser of the product and not to any third party.

As a condition precedent to Pandrol's obligation hereunder, the defective product must not have been altered or modified without the express written approval of Pandrol. The product must not have been subjected to deliberate damage, shipping damage, neglect, tampering by unauthorized personnel or damage by improper use, storage or maintenance. Serial numbers must not have been altered, defaced or removed. Such action voids limited warranty.

9.1. Exclusions to limited warranty

This limited warranty is exclusive and is in lieu of any other warranty, written or oral, expressed or implied, including, without limitation, any implied warranty or merchantability or fitness for a particular purpose.

Limited warranty does not cover normal wear and tear items such as filters, hoses, couplers, bits, sockets, augers, and batteries

9.2. Limitation of liability

Except as provided above, Pandrol shall in no event be liable or responsible for any injury, loss or damage, direct, incidental or consequential, arising out of the use or misuse or inability to use the product, however caused and on any theory of liability including, without limitations, breach of contract, tort, (including negligence or street liability) and not withstanding any failure of any remedy herein of its essential purpose, even if Pandrol was aware of this possibility of such damage. Pandrol's limited warranty as set forth above shall not be enlarged, diminished or affected by, and no obligation or liability shall arise or go out of the rendering of technical advice or service by Pandrol or its agents. The foregoing may not be changed except by written agreement signed by an authorized officer of Pandrol, the remedies set forth herein are exclusive.



10. Customer information

Name _____

Company _____

Serial # of your Pandrol tool _____

Upon receiving your Pandrol tool, make sure to list serial number above so that a good record is kept for order information.

Pandrol hydraulic tool list

All Pandrol Hydraulic Tools operate at 5 GPM (19 LPM) or 10 GPM (38 LPM) @ 2000 PSI (140 BAR)

Power units:

00100K – Gasoline powered (1) 10 GPM or (2) 5 GPM circuits

02900A – Diesel (1) 10 GPM or (2) 5 GPM circuits (optional catalytic exhaust)

05500 – Twin power dual circuit (1) 10 GPM or (2) 5 GPM circuits & 5000 watt generator

02050RM – Modular power unit (1) 9 GPM

03700A – Electric power (1) 10 GPM or (2) 5 GPM circuits

Grinders:

09200A – Precision frog grinder

06000 – Profile grinder

06950 & 06950A – Multi-purpose grinder

05900 – Frog/profile grinder (trigger version available)

00700 – Rail surfacing guide

04600 – Straight stone grinder cw rotation (trigger version available)

04700 – Straight stone grinder ccw rotation (trigger version available)

07500 – Chamfer tool

04800 – 6" Cup stone grinder (trigger version available)

00600 – 8" Cup stone grinder

05400 – Angle grinder

09300 - Head wash grinder

Track tools:

03900A – Reversing rail saw
05100A & 05100B – Power weld shear
03500 – Self feed rail drill
04500D – 1/2" Hydraulic drill impact wrench
08200 – Tamper
02800A – 60 Ton bridge spreader
01200 – Spring anchor applicator
01100A – Spike puller (Single, 2 stage & trigger versions available)
00800A – 16" Rail saw
05000 – Hand pump weld shear
02500 – 10 GPM 1" Impact wrench
08300 – Spike driver
01600A – 5 GPM 1" Impact wrench
01100RM – Light-weight spike puller

Other products:

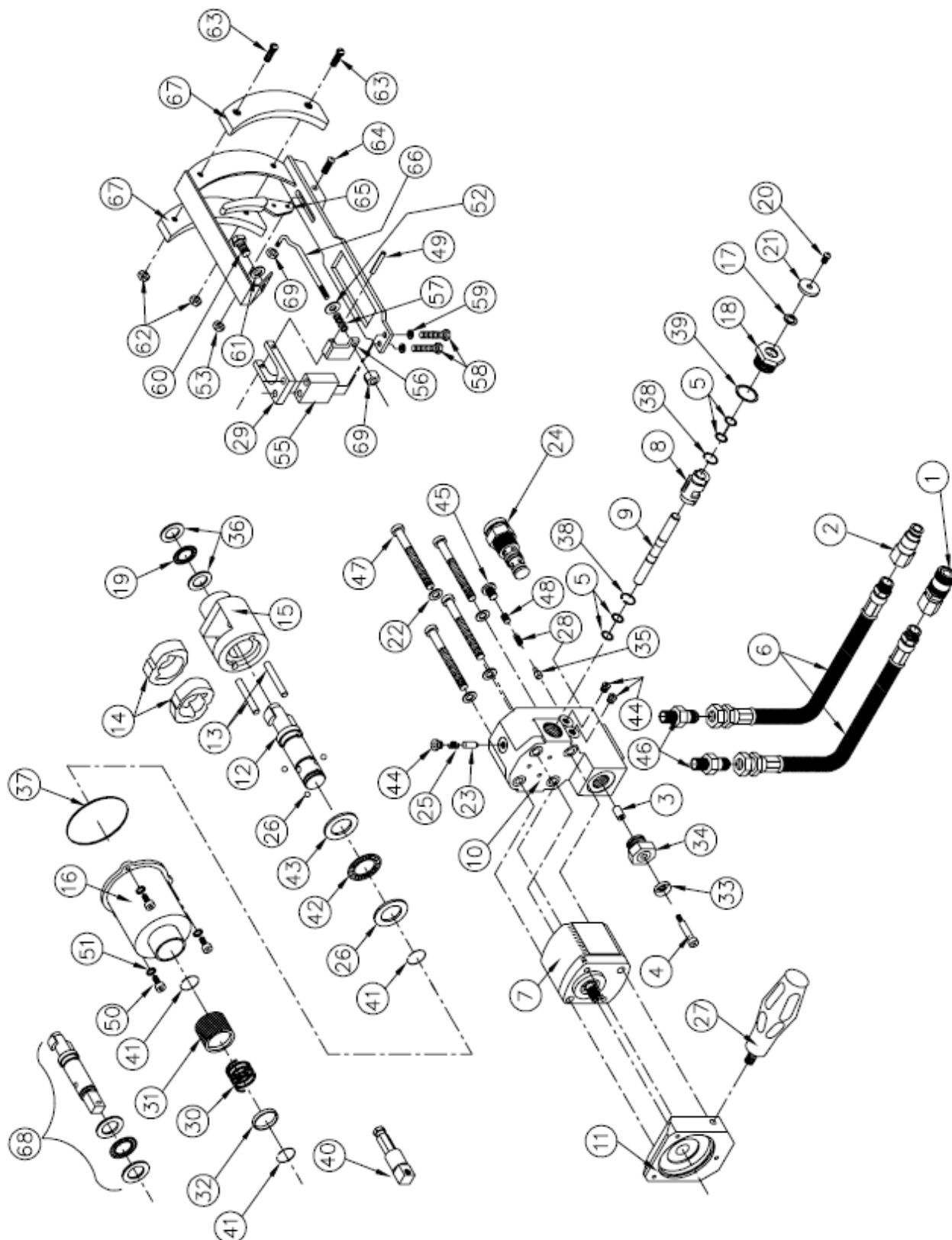
Hydraulic manifolds
Hydraulic test gauges
Hose reels
Hydraulic hoses

Accessories

Drill bits
Shear Blades
Saw Blades
Grinding Stones
Sockets

11. Assembly

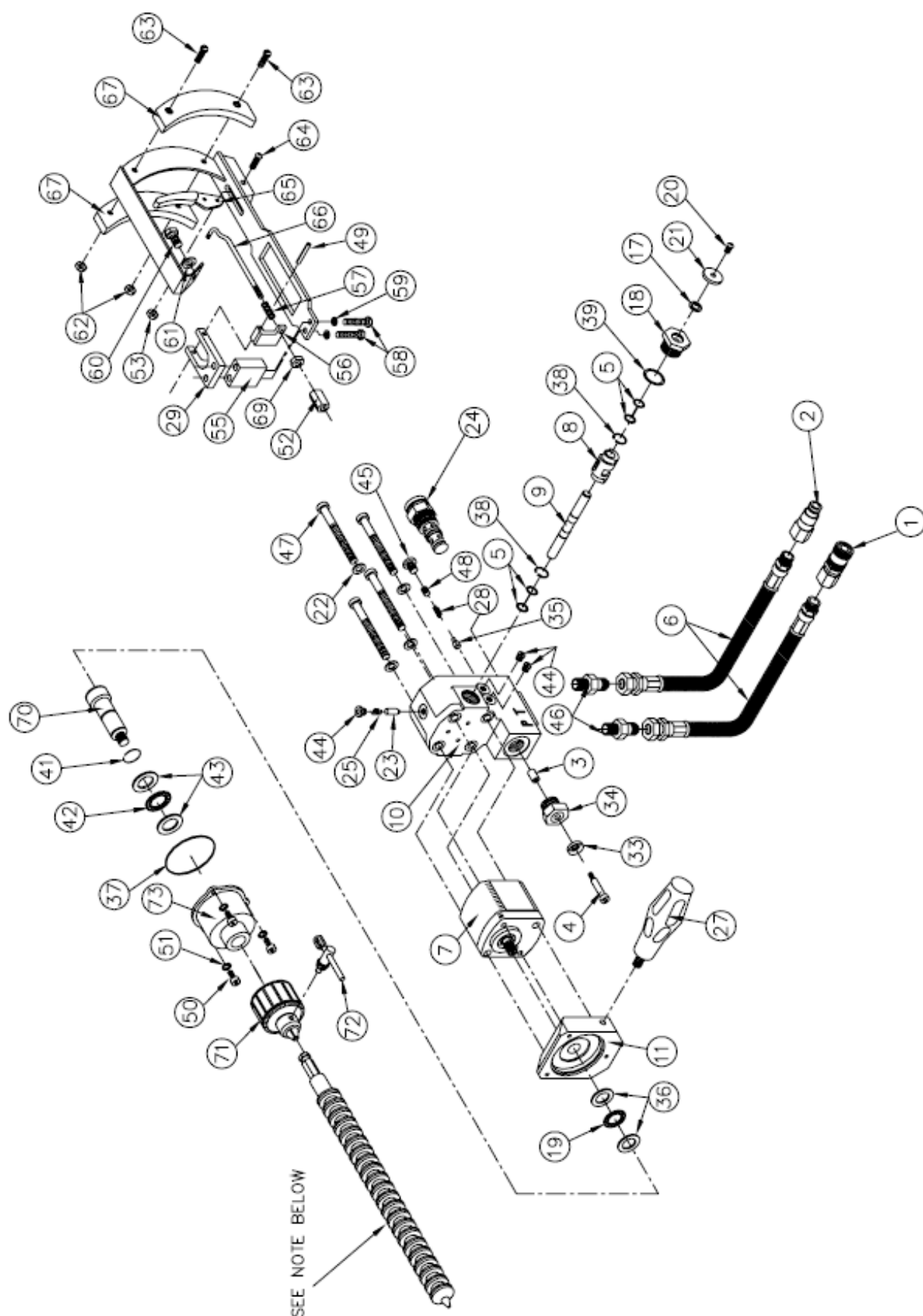
11.1. Parts diagram



11.2. Parts list

ITEM NO.	PART NO.	DESCRIPTION	QUANTITY
1	00145	QD coupler	1
2	00146	QD nipple	1
3	00412	locking pin	1
4	00414	1/4x1" shoulder bolt	1
5	00420	O-ring	4
6	01803	hydraulic hose	2
7	045001	1/2" impact motor	1
8	045002	reversing valve	1
9	045003	reversing valve shaft	1
10	045004	valve manifold	1
11	045005	motor adaptor	1
12	045006	anvil	1
13	045007	hammer pin	2
14	045008	hammer	2
15	045009	hammer frame	1
16	045010	hammer case w/bushing	1
17	045012	wiper seal	2
18	045013	gland nut	2
19	045014	thrust bearing	1
20	045017	12-24 x 3/8" flat head ms	2
21	045018	reversing valve collar	2
22	045019	valve body washer	4
23	045020	reversing valve locator	1
24	045021	trigger valve	1
25	045023	guide spring	1
26	045026	retainer ball	3
27	045028	side handle	1
28	045030	spring	1
29	045031	trigger mount	1
30	045033	coupler spring	1
31	045034	coupler body	1
32	045035	coupler spring retainer	1
33	045036	bellows seal	1
34	045037	guide bushing	1
35	045040	relief poppet	1
36	045041	bearing race	2
37	045042	O-ring	1
38	RE-037	3/8 ext. retaining ring	2
39	045043	O-ring	2
40	045046	adaptor 1/2" square drive	1
41	045047	thrust ring lock	3
42	045048	anvil thrust bearing	1
43	045049	anvil bearing race	2
44	231P-02	#2 str. thrd. sock. plug	4
45	231P-04	#4 str. thrd. sock. plug	1
46	2404-06-04	adaptor 1/4 mpx 3/8 mj	2
47	A5470	5/16-18 x 3/14 shcs	4
48	A5625	5/16-24 x 1/4 set screw	1
49	A6065	5/32 x 1-1/4 spring pin	1
50	A6550	10-24 x 5/8 shcs	3
51	A6800	#10 lock washer	3
52	A2189	#10 flat washer	1
53	A6699	10-24 nylock nut	1
54	045062	"D" handle assembly	1
55	045057	spacer block	1
56	045063	trigger actuator	1
57	045065	trigger spring	1
58	A1007	1/4-20 x 2-1/4 gr. 5 zp	2
59	A2190	1/4 flat washer	2
60	A1021	5/16-18 x 1/2 gr 5 zp	1
61	A2191	5/16 flat washer	1
62	A6749	10-24 hex nut	2
63	A6326	10-24 x 1-1/4 slotted bolt	2
64	A6330	10-24 x 1 bhcs	1
65	045061	trigger	1
66	045060	trigger rod	1
67	045059	handle grip plate	2
68	045095	square drive anvil kit	1
69	A6750	10-32 nylock nut	2
** - Items are included in 045045 anvil kit			

11.3. Parts diagram



11.4. Parts list

ITEM NO.	PART NO.	DESCRIPTION	QUANTITY
1	00145	QD coupler	1
2	00146	QD nipple	1
3	00412	locking pin	1
4	00414	1/4x1" shoulder bolt	1
5	00420	o-ring	4
6	01803	hydraulic hose	2
7	045001	1/2" impact motor	1
8	045002	reversing valve	1
9	045003	reversing valve shaft	1
10	045004	valve manifold	1
11	045005	motor adaptor	1
16	045010	hammer case w/bushing	2
17	045012	wiper seal	2
18	045013	gland nut	1
19	045014	thrust bearing	1
20	045017	12-24 x 3/8" flat head ms	2
21	045018	reversing valve collar	2
22	045019	valve body washer	4
23	045020	reversing valve locator	1
24	045021	trigger valve	1
25	045023	guide spring	1
27	045028	side handle	1
28	045030	spring	1
29	045031	trigger mount	1
33	045036	bellows seal	1
34	045037	guide bushing	1
35	045040	relief poppet	1
36	045041	bearing race	2
37	045042	o-ring	1
38	RE-037	3/8 ext. retaining ring	2
39	045043	o-ring	2
41	045047	thrust ring lock	1
42	045048	anvil thrust bearing	1
43	045049	anvil bearing race	2
44	231P-02	#2 str. thrd. sock. plug	4
45	231P-04	#4 str. thrd. sock. plug	1
46	2404-06-04	adaptor 1/4 mpx 3/8 mj	2
47	A5470	5/16-18 x 3/14 shcs	4
48	A5625	5/16-24 x 1/4 set screw	1
49	A6065	5/32 x 1-1/4 spring pin	1
50	A6550	10-24 x 5/8 shcs	3
51	A6800	#10 lock washer	3
52	045064	trigger spacer	1
53	A6699	10-24 nylock nut	1
54	045062	"D" handle assembly	1
55	045057	spacer block	1
56	045063	trigger actuator	1
57	045065	trigger spring	1
58	A1007	1/4-20 x 2-1/4 gr. 5 zp	2
59	A2190	1/4 flat washer	2
60	A1021	5/16-18 x 1/2 gr 5 zp	1
61	A2191	5/16 flat washer	1
62	A6749	10-24 hex nut	2
63	A6326	10-24 x 1-1/4 slotted bolt	2
64	A6330	10-24 x 1 bhcs	1
65	045061	trigger	1
66	045060	trigger rod	1
67	045059	handle grip plate	2
69	A6750	10-32 machine nut	1
70	045021	chuck adaptor	1
71	045098	drill chuck 5/8"	1
72	045023	chuck key	1
73	045202	front-case drill	1

12. Disclaimer

Pandrol exempts itself from liability in the event of usage that deviates from that recommended in this manual.

13. Contact

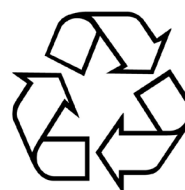
Address	Phone	Internet and E-mail
		www.Pandrol.com

14. Recycling and Environment

Sustainable environment is a great part of Pandrol.

All components of the product can either be:

- Recycled
- Taken care of
- Be re-used



We recommend you to follow your local region regulations of environmental and recycling policies.

PANDROL

Find out more at
pandrol.com

Pandrol

©Pandrol

Partners in excellence