

PANDROL



Multi-Purpose Grinder

MODEL 06950A
06950-TST

OPERATION AND MAINTENANCE
MANUAL



ENG_OMM_MULTI-PURPOSE_GRINDER_P01

09th November 2021

Partners in excellence

Thank you for choosing Multi-Purpose Grinder!
You are now the owner of a quality product from Pandrol.

1. Preface

This manual aims to help you get to know your new Multi-Purpose Grinder, to use it in the best way and to maintain it properly for a long lifetime. It also presents important safety regulations and warnings.

The manual is intended for people who handle and operate the machine. It is originally written in English and translated into the local language by Pandrol.

Pandrol reserves the right to change specifications, equipment, instructions and maintenance guidelines without prior notice.

The manual contains instructions about the following topics:

1. Installation
2. Operation
3. Safety features and warnings
4. Maintenance and troubleshooting

(1) refers to a component in a figure/illustration.

IMPORTANT

This manual contains ordered actions, e.g.

1. Do this
2. ...and then this...
3. ...and finally this

These actions **must** be done in the numerical order presented.

2. Revision

Revision	Date	Comments
P01	2021-11-09	New Manual

Table of Contents

1.	Preface	2
2.	Revision	2
3.	Safety Information	4
3.1.	General	4
3.2.	Safety actions	4
3.3.	Personal/Safety equipment	5
3.4.	Safety precautions	5
3.5.	Qualified personnel	6
4.	Summary	7
5.	Operation	8
5.1.	Grinding head position	9
5.2.	Cold weather operation	9
6.	Review of hydraulic principles	10
6.1.	Hydraulic formulas	10
6.2.	Back pressure	10
7.	Maintenance	11
7.1.	General	11
7.2.	Warning labels and information symbols	12
8.	Limited warranty	13
8.1.	Exclusions to limited warranty	13
8.2.	Limitation of liability	13
9.	Customer information	14
10.	Assembly	16
10.1.	Parts diagram 06900A	16
10.2.	Parts list 06900A	17
10.3.	Parts diagram 06950A w/ bolt-on trigger bail	18
10.4.	Parts list 06950A w/ bolt-on trigger bail	19
10.5.	Parts diagram 06950A w/ welded trigger bail	20
10.6.	Parts list 06950A w/ welded trigger bail	21
10.7.	Parts list 06950-TST	22
11.	Disclaimer	23
12.	Contact	23
13.	Recycling and Environment	23

3. Safety Information



3.1. General

- Tool operators and maintenance personnel must always comply with the safety precautions given in this manual, and with all stickers and tags attached to the tool and hoses.
- All safety precautions are given for your safety. Read to understand and follow all safety, maintenance and operation instructions before you use or maintain the tool.
- Review the manual daily before using the tool.
- Follow all safety guidelines given you by your supervisor. Do not use the tool if you have any questions about the operation, safety or maintenance of this tool . Failure to follow these instructions can result in personal injury or equipment damage.
- Pandrol has no control over the tool use or operation once it leaves the plant. Pandrol has no control over operator or maintainer selection. The customer must assume responsibility for the tool suitability for a particular function.
- During use of the tool, good judgement must be used to work safely and efficiently without endangering themselves or bystanders.
- Understanding of the operation and maintenance manual is essential for anyone using or maintaining the tool.
- Warnings and safety precautions described in this document shall only be considered as a minimum. National conditions, standards and regulations override conditions, standards and regulations described in this document.
- Work with the machine is only to be carried out by qualified personnel, well-informed and educated in general railway workmanship and specifically in the conditions, standards and regulations on specific rail track.
- The machine may only be used for its specified purpose.
- Any adjustments or service on the machine is only allowed to be done by qualified personnel that have read and understood this manual and have had training and information from Pandrol.

3.2. Safety actions

- Read and understand all safety regulations and warnings before installation, operating or performing maintenance on this machine.
- Do not operate the tool until you have been thoroughly and properly trained or under the supervision of an instructor.
- Check power source daily to determine if correct flow and pressure are available. Never exceed flows or pressures for the tool being used. Personal injury or damage to the tool can result.
- Operators must clear the work area of non-essential personnel. Flying debris can cause serious injury.
- The operator must be familiar with all prohibited work areas such as unsafe grades, poor footing areas and overhead hazards.
- Use standards and regulations, accident prevention regulations and regulations concerning special ambient conditions (e.g. areas potentially endangered by explosive materials, heavy pollution or corrosive influences).
- Maintain balance and proper footing at all times. Never overreach to the extent that a broken part or sudden movement of the tool can cause you to lose your balance and fall, or cause injury to your self or someone else.

- Do not operate the tool at excessive fluid temperatures operator discomfort and potential burns can result at high oil temperatures.
- Do not clean inspect or repair the tool while connected to the power source. Accidental engagement of the tool can cause serious personal injury.
- Oil injection hazard exists with this tool. Oil injection is a condition where hydraulic oil is injected under the skin from pressure in the line. Always wear gloves and repair any leaks immediately. Never carry a tool by the hoses.
- Do not use damaged equipment. Immediately replace any damaged hoses, fittings, or other components showing wire braid, nicks, cuts, damage or abrasions. Failure to do so may result in equipment damage and / or personal injury or death.
- Clean up any oil or fluid spills immediately.

3.3. Personal/Safety equipment

- Never wear loose clothing that can get entangled in the working parts of the tools or be careless with hands, feet or other body parts around the working parts of the tools. Hydraulic tools exert high torque and force and can cause serious injury or death if improperly used.
- When working near electrical conductors, always assume that the conductors are energized and that hoses and clothing can conduct harmful electricity. Use hoses labeled and certified as nonconductive.
- Always wear safety equipment such as oil injection resistant work gloves, safety glasses, safety boots, ear protection and other safety apparel dictated by your supervisor applicable for the job you are doing and the tool you are using.
- The use of an compressed air, which must be less than 8 BAR (116 PSI), to blow parts clean or to blow them dry after being cleaned with a solvent will cause particles of dirt and/or droplets of the cleaning solvent to be airborne. These conditions may cause skin and/or eye irritation. When using an air jet do not direct it toward another person. Improper use of air jet could result in bodily injury.

3.4. Safety precautions

- Always wear protective equipment such as gloves, safety glasses, ear protection
- And safety shoes.
- Do not wear clothing which may become entangled in the tool.
- Always keep work area free of tools or any other objects which may impair
- Sound footing.
- Caution oil injection hazard exists with this tool. Oil injection is a condition where the hydraulic oil is forced under the skin through pressure in the line. Always wear gloves, do not carry the tool by hydraulic hoses, and repair leaks immediately..
- Never change stones with the power source valve(s) in the "ON" position, turn the power source "OFF".
- Never attempt to carry the grinder with the power source in the "ON" position, turn the power source "OFF".

- Never touch or try to stop a moving stone.
- Always check the work area for any trash which may ignite from sparks.
- Always check the area for smoldering ties or trash before leaving the site.
- When changing stones, follow all grinding stone manufacturers instructions for safety and operation. Use only stones that comply with ansi standards. Before using, run new grinding stone for one minute at full speed to check for defects or vibration.
- Most hydraulic oils have a flash point of approximately 450 degrees (f). Make sure hoses are completely clear of sparks and hot debris. Have another person stand close to hydraulic power source controls to observe operation and for emergency shutdown if necessary.

3.5. Qualified personnel

The machine is only to be used by trained personnel, thoroughly familiar with and trained in general railway workmanship. The equipment should be operated according to the conditions and standard regulations applying to the track they are working on.

The equipment must be serviced, maintained, or in any way modified only by trained personnel, who are familiar with the Operation & Maintenance Manual and have received training and information from Pandrol.

In order to avoid personal injury and/or material damage, everyone involved with assembling, starting-up or overhaul must possess relevant knowledge of the equipment, its use, maintenance requirements and procedures.

4. Summary

The Pandrol Multi-Purpose Grinder allows operators to remain in an ergonomic upright position while performing field weld grinding. The adjustable rear handle positions easily for the operators preferred height and comfort or lowered and swiveled around for compact storage.



Fig 1.

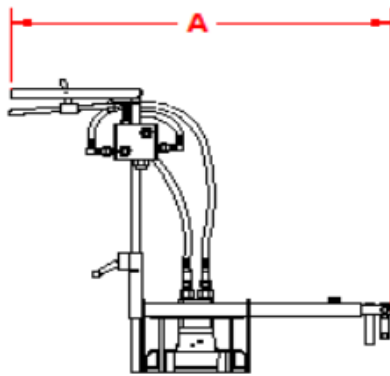


Fig 2.

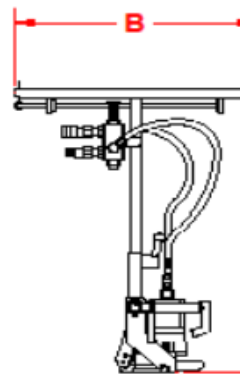


Fig 3.

Flow	Pressure	RPM	Dimensions	Weight
10 GPM (38 LPM)	2000 PSI (140 BAR)	4000	A - 40" (101.6 cm) B - 22" (55.9 cm) C - 34" (86.4 cm)	43 lbs (19.5 kg)

Accessories:

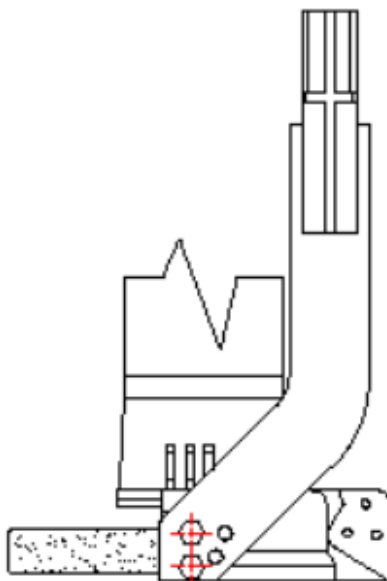
00499 - 8 x 1 x 5/8 Hub grinding stone

5. Operation

- With the power source in the "OFF" position, connect the hoses. Do not drag the service hose by pulling with the tool. Loop the service hose in the work area in such a way to relieve stress on the hose and quick disconnect fittings while working. Be aware of hose location at all times.
- Connect the tool to the power source.
- Place the grinder on the rail with the front hook over the rail head and the grinding head in the general grinding area.
- Grasp the tool firmly before engaging the trigger. There will be a slight torque reaction when the stone is activated.

5.1. Grinding head position

The stone is always in the horizontal position. The hook is also used in this position. This position is used for thermite weld, profile blend-ins and removal.



NOTE!

- **Refer to manufacturer's specifications for torque settings on stone attachment**

Fig 4.

5.2. Cold weather operation

Hydraulic system performance is affected when the temperature drops below 50°F. Therefore, measures should be taken to pre-warm tools and fluids before operating.



NOTE!

- **Refer to operating procedures of this manual before starting**

6. Review of hydraulic principles

Tool circuit

6.1. Hydraulic formulas

$$\text{GPM} = \frac{\text{CID} \times \text{RPM}}{231}$$

$$\text{HP} = \frac{\text{GPM} \times \text{PSI}}{1714 (.85)}$$

Example: HP required to deliver 10 GPM at 1500 PSI.

$$\frac{10 \text{ GPM} \times 1500 \text{ PSI}}{1456.9} = \frac{15000}{1456.9} = 10.3 \text{ HP}$$

(subtract back pressure for tool HP)

Estimated HP delivered by pump or used by tool

GPM	500	1000	1500	2000	2500	3000
3	1.03	2.06	3.09	4.12	5.15	6.18
5	1.72	3.43	5.15	6.86	8.58	10.30
10	3.43	6.86	10.30	13.70	17.20	20.60
15	5.15	10.30	15.40	20.60	25.70	30.90

6.2. Back pressure

Back pressure measured at the tool return port must not exceed the manufacturers back pressure rating. Most manufacturers list the maximum back pressure for their hydraulic tools at 250 PSI. Back pressure measured on the return side of the tool is the force required to get the oil back to the tank. In almost all cases the lower the back pressure the better the tool performance. First, the back pressure is subtracted from the maximum tool pressure to arrive at a maximum tool operating pressure. For example, tools with 2000 PSI operating pressure are installed on a system with 250 PSI back pressure. This leaves 1750 PSI as a maximum tool pressure. Imagine a system with 500 PSI back pressure. 2000 Minus 500 PSI back pressure leaves only 1500 PSI for the tool. Second, tools are designed for pressure to build on the pressure side of the tool. If too much pressure builds on the return side, not only is performance effected, but seals may blow. This is why it is very important to direct the flow into the tool correctly. Reversing the hoses to test may result in blown seals, damage to the tool, and personal injury.

7. Maintenance

7.1. General

Maintenance and overhaul is to be carried out by qualified personnel only
Warranty is based on parts and spares delivered by Pandrol.

Check tools DAILY for proper operation, leaks, or damage.

Inspect hoses DAILY. Replace cut, burned, or otherwise damaged hoses.

Keep quick disconnect couplers clean and lubricated.

Use hydraulic fluids that comply with HTMA Specification 5.7, The hydraulic fluid should have a viscosity between 100 and 400 SSU (20-82 centistokes) at the maximum and minimum expected operating temperatures. Petroleum based hydraulic fluids with anti-wear properties and a viscosity index of over 140 work for a wide range of operating conditions.

The following oils meet HTMA Specification 5.7

AMOCO RYKON MV
 SUNVIS 706
 CHEVRON EP-MV

CITGO A/W ALL TEMP
 MOBIL D.T.E. 13
 TEXACO "RANDO" HDAZ

Other fluids that meet or exceed this specification can be used.

*** See cold weather operation hydraulic oil note.**

Have tool inspected, at least annually, by Pandrol or a Pandrol qualified service representative to determine if tool is in need of safety changes or worn part replacement.

Contact Pandrol on a periodic basis, at least annually, for service Bulletins, safety notices, or other important information pertaining to this tool.



WARNING!

- **All adjustments work, overhaul and service must take place with the machine turned off. Failure to do so could lead to fatal injury.**
- **It is of great importance that qualified personnel accomplish all service and overhaul**

7.2. Warning labels and information symbols

Below are examples of warning labels and information symbols on the machine. If any of these labels become damaged or lost, they are to be replaced with new original warning labels that are available from Pandrol.



8. Limited warranty

Pandrol, INC warrants to the original purchase of this product that the product will be free from defects in material and workmanship for the period of one (1) year after the delivery of such product to the customer. Other equipment and parts used, but not manufactured by Pandrol are covered directly by the warranty of the manufacturer of those products. Proof of purchase must be documented including reference to a serial number located on each tool. The purchaser's only remedies under this limited warranty shall be limited at Pandrol's sole option to the following: repair, replacement or refund of the purchase price of the defective products. Each of these remedies requires timely notification of the defect in the product and substantiation that the product has been properly stored, maintained and used. Pandrol's obligations hereunder extend only to the purchaser of the product and not to any third party.

As a condition precedent to Pandrol's obligation hereunder, the defective product must not have been altered or modified without the express written approval of Pandrol. The product must not have been subjected to deliberate damage, shipping damage, neglect, tampering by unauthorized personnel or damage by improper use, storage or maintenance. Serial numbers must not have been altered, defaced or removed. Such action voids limited warranty.

8.1. Exclusions to limited warranty

This limited warranty is exclusive and is in lieu of any other warranty, written or oral, expressed or implied, including, without limitation, any implied warranty or merchantability or fitness for a particular purpose.

Limited warranty does not cover normal wear and tear items such as filters, hoses, couplers, bits, sockets, augers, and batteries

8.2. Limitation of liability

Except as provided above, Pandrol shall in no event be liable or responsible for any injury, loss or damage, direct, incidental or consequential, arising out of the use or misuse or inability to use the product, however caused and on any theory of liability including, without limitations, breach of contract, tort, (including negligence or street liability) and not withstanding any failure of any remedy herein of its essential purpose, even if Pandrol was aware of this possibility of such damage. Pandrol's limited warranty as set forth above shall not be enlarged, diminished or affected by, and no obligation or liability shall arise or go out of the rendering of technical advice or service by Pandrol or its agents. The foregoing may not be changed except by written agreement signed by an authorized officer of Pandrol, the remedies set forth herein are exclusive.

9. Customer information

Name _____

Company _____

Serial # of your Pandrol tool _____

Upon receiving your Pandrol tool, make sure to list serial number above so that a good record is kept for order information.

Pandrol hydraulic tool list

All Pandrol Hydraulic Tools operate at 5 GPM (19 LPM) or 10 GPM (38 LPM) @ 2000 PSI (140 BAR)

Power units:

00100K – Gasoline powered (1) 10 GPM or (2) 5 GPM circuits

02900A – Diesel (1) 10 GPM or (2) 5 GPM circuits (optional catalytic exhaust)

05500 – Twin power dual circuit (1) 10 GPM or (2) 5 GPM circuits & 5000 watt generator

02050RM – Modular power unit (1) 9 GPM

03700A – Electric power (1) 10 GPM or (2) 5 GPM circuits

Grinders:

09200A – Precision frog grinder

06000 – Profile grinder

06950 & 06950A – Multi-purpose grinder

05900 – Frog/profile grinder (trigger version available)

00700 – Rail surfacing guide

04600 – Straight stone grinder cw rotation (trigger version available)

04700 – Straight stone grinder ccw rotation (trigger version available)

07500 – Chamfer tool

04800 – 6" Cup stone grinder (trigger version available)

00600 – 8" Cup stone grinder

05400 – Angle grinder

09300 - Head wash grinder

Track tools:

03900A – Reversing rail saw
05100A & 05100B – Power weld shear
03500 – Self feed rail drill
04500D – 1/2" Hydraulic drill impact wrench
08200 – Tamper
02800A – 60 Ton bridge spreader
01200 – Spring anchor applicator
01100A – Spike puller (Single, 2 stage & trigger versions available)
00800A – 16" Rail saw
05000 – Hand pump weld shear
02500 – 10 GPM 1" Impact wrench
08300 – Spike driver
01600A – 5 GPM 1" Impact wrench
01100RM – Light-weight spike puller

Other products:

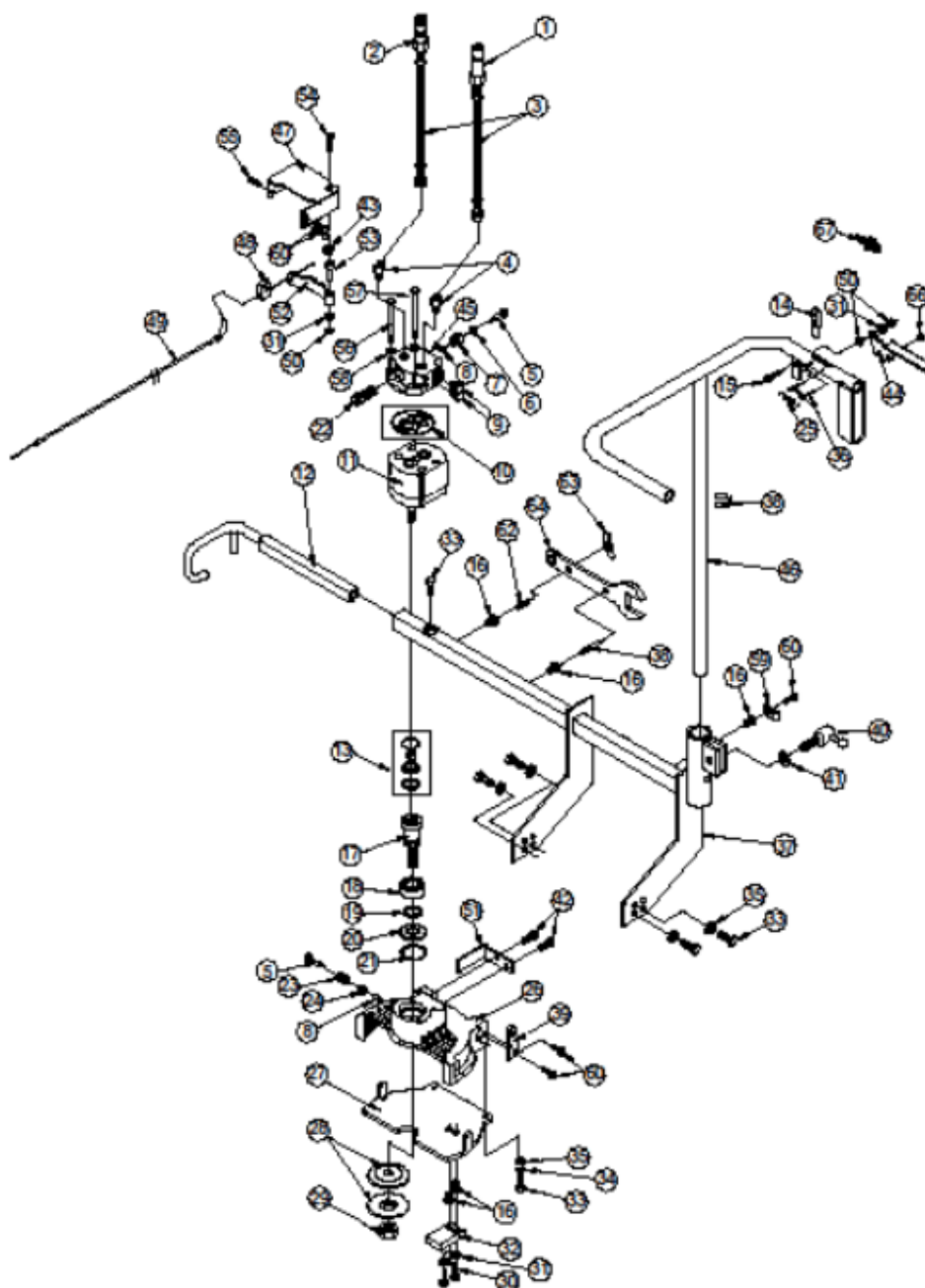
Hydraulic manifolds
Hydraulic test gauges
Hose reels
Hydraulic hoses

Accessories

Drill bits
Shear Blades
Saw Blades
Grinding Stones
Sockets

10. Assembly

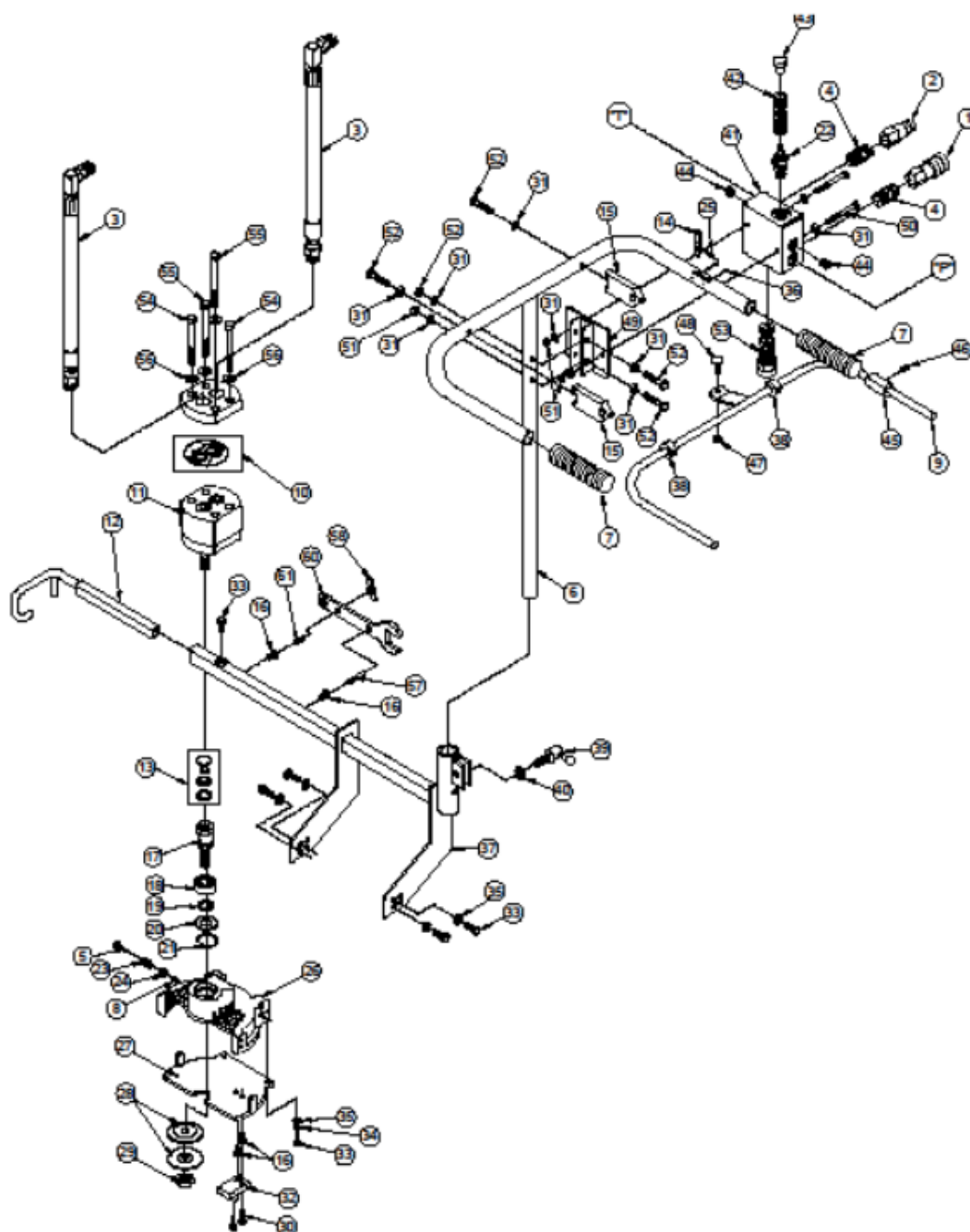
10.1. Parts diagram 06900A



10.2. Parts list 06900A

ITEM NO.	PART NO.	DESCRIPTION	QTY.
1	00145	QUICK DISCONNECT COUPLER	1
2	00146	QUICK DISCONNECT NIPPLE	1
3	00816	PIGTAIL HOSE ASSEMBLY	2
4	355-08-06	3/8 x 1/2 NPT 45 ELBOW	2
5	A6910	DIA. 1/4 X 1 SHOULDER BOLT	2
6	045036	BELLOWS SEAL	1
7	045037	GUIDE BUSHING	1
8	00412	LOCKING PIN	2
9	231P-02	#2 STRAIGHT PLUG	4
10	01631	INTERNAL SEAL KIT	1
11	00410A	TOP PORT MOTOR	1
12	06903	RAIL GUIDE FRAME	1
13	01612	MOTOR SEAL KIT	1
14	03981	REVERSE SAFETY LEVER	1
15	A6355	1/4-20 X 1 3/4 BHCS	1
16	A2062	NUT INSERT	3
17	047001	DRIVE SHAFT CCW	1
18	046003	BEARING	1
19	046005	RETAINING RING	1
20	046004	SEAL	1
21	00403	INTERNAL RETAINING RING	1
22	045021	TRIGGER VALVE	1
23	00413	SPRING	1
24	00415	PLUG	1
25	046594	SAFETY LEVER SPRING	1
26	046001	STRAIGHT STONE GUARD	1
27	046006	STONE SHIELD	1
28	00402	FLANGE	2
29	A1436	5/8-11 HEAVY HEX NUT	1
30	A1002	1/4-20 X 1 GR 5 ZP	2
31	A2190	1/4 SAE FLAT WASHER	4
32	06909	RUB BLOCK	1
33	A1021	5/16-18 X 3/4 GR 5 ZP	5
34	A3810	5/16 LOCK WASHER	2
35	A2191	5/16 SAE FLAT WASHER	4
36	A6062	1/8 X 1 SPRING PIN	2
37	06901	FRAME ASSEMBLY	1
38	06905	CONDUIT CLIP	1
39	06914	CABLE BRACKET	1
40	01909	LOCK KNOB	1
41	A2192-N	NYLON WASHER	1
42	A6358	5/16-18 X 5/8 BHCS	2
43	A1450	1/4-20 JAM NUT	2
44	06904	TRIGGER	1
45	046501	MANIFOLD	1
46	06902	HANDLE ASSEMBLY	1
47	046503	TOP PLATE	1
48	046507	CABLE SPACER	1
49	06907	TRIGGER CABLE	1
50	A2046	1/4-20 NYLOCK NUT	2
51	00108-01	CABLE PROTECTOR	1
52	046502	PLUNGER LEVER	1
53	046509	BUSHING	1
54	A6355	1/4-20 X 1 3/4 BHCS	1
55	A6350	1/4-20 X 3/4 BHCS	1
56	A1052	3/8-16 X 3 1/2 GR 5 ZP	2
57	A1054	3/8-16 X 4 GR 5 ZP	2
58	A2192	3/8 SAE FLAT WASHER	4
59	06905	CONDUIT CLIP	2
60	A6349	1/4-20 X 5/8 BHCS	6
62	A2499	1/4-20 WING NUT	1
63	A5608	1/4-20 X 7/8 SET SCREW	1
64	06910	WRENCH	1
66	02919	CABLE STOP	1
67	02940	ADJUSTMENT NUT	1

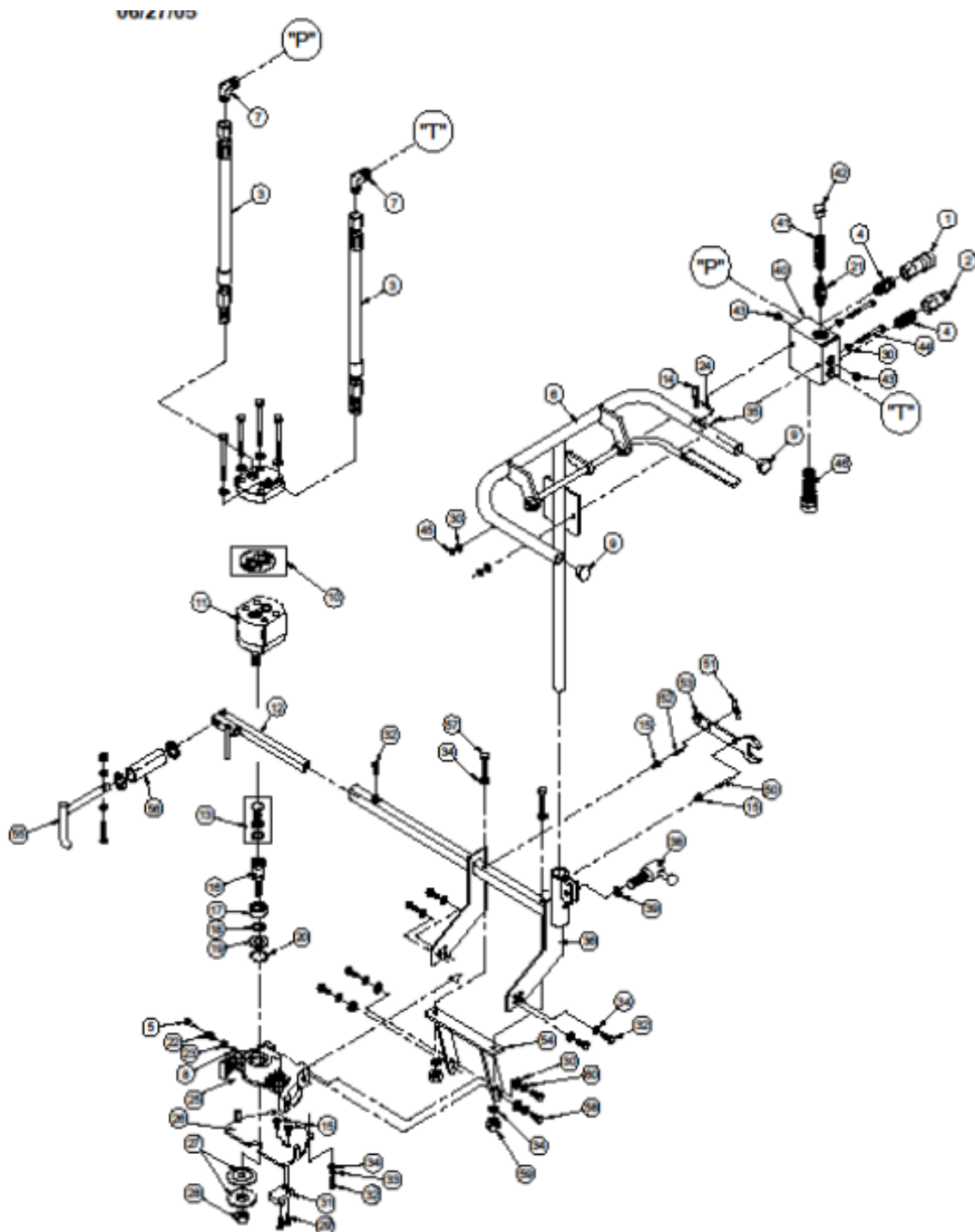
10.3. Parts diagram 06950A w/ Bolt-on trigger bail



10.4. Parts list 06950A w/ Bolt-on trigger bail

ITEM NO.	PART NO.	DESCRIPTION	QTY.
1	00145	QUICK DISCONNECT COUPLER	1
2	00146	QUICK DISCONNECT NIPPLE	1
3	00816	PIGTAIL HOSE ASSEMBLY	2
4	69-08-08	1/2 MP x 1/2 MP NIPPLE	2
5	A6910	DIA. 1/4 X 1 SHOULDER BOLT	1
6	06956	HANDLE	1
7	00106	GRP	2
8	00412	LOCKING PIN	1
9	06951	TRIGGER BAIL	1
10	01631	INTERNAL SEAL KIT	1
11	00410A	TOP PORT MOTOR	1
12	06903	RAIL GUIDE FRAME	1
13	01612	MOTOR SEAL KIT	1
14	03981	SAFETY LEVER	1
15	06953	TRIGGER MOUNTING BLOCK	2
16	A2062	NUT INSERT	4
17	047001	DRIVE SHAFT COW	1
18	046003	BEARING	1
19	046005	RETAINING RING	1
20	046004	SEAL	1
21	00403	INTERNAL RETAINING RING	1
22	05960	TRIGGER VALVE	1
23	00413	SPRING	1
24	00415	PLUG	1
25	046594	SAFETY LEVER SPRING	1
26	046001	STRAIGHT STONE GUARD	1
27	046006	STONE SHIELD	1
28	00402	FLANGE	2
29	A1436	5/8-11 HEAVY HEX NUT	1
30	A6306	1/4-20 x 1 FLAT HEAD BOLT	2
31	A2190	1/4 SAE FLAT WASHER	8
32	06909	RUB BLOCK	1
33	A1021	5/16-18 x 3/4 GR 5 ZP	7
34	A3810	5/16 SAE LOCK WASHER	2
35	A2191	5/16 SAE FLAT WASHER	6
36	A6062	1/8 X 1 SPRING PIN	2
37	06901	FRAME ASSEMBLY	1
38	LC-050	1/2" I.D. LOCK COLLAR	2
39	01909	LOCK KNOB	1
40	A2192-N	NYLON WASHER	1
41	00795	FLOW CONTROL MANIFOLD	1
42	01627	SPRING	1
43	05954	ACTUATION BUTTON	1
44	231P-04	#4 SAE O-RING HEX SOCKET PLUG	2
45	06952	SAFETY LEVER REST BLOCK	1
46	A5602	1/4-20 x 5/16 SOCKET HEAD SET SCREW	1
47	A1452	5/16-18 HEX JAM NUT	1
48	A1019	5/16-18 WELD STUD	1
49	06954	MANIFOLD MOUNT BRACKET	1
50	A1008	1/4-20 x 2 3/4 GR 5 ZP	2
51	A2046	1/4-20 NYLOCK NUT	4
52	A1005	1/4-20 x 1 3/4 GR 5 ZP	4
53	00796	FLOW CONTROL CARTRIDGE VALVE	1
54	A1052	3/8-16 x 3 1/2 GR 5 ZP	2
55	A1054	3/8-16 x 4 GR 5 ZP	2
56	A2192	3/8 SAE FLAT WASHER	4
57	A6200	1/4" I.D. DETENT PIN	1
58	A2499	1/4-20 WING NUT	1
59	A5608	1/4-20 x 7/8 SOCKET HEAD SET SCREW	1
60	06910	WRENCH	1

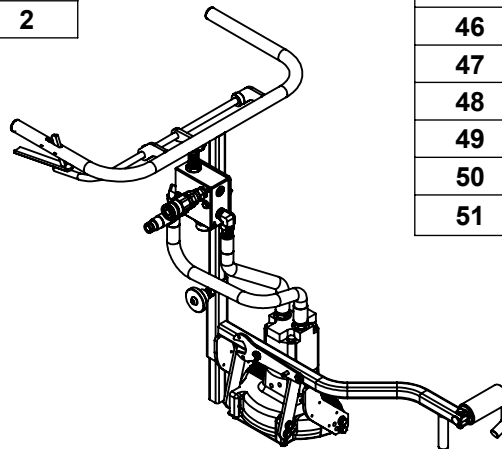
10.5. Parts diagram 06950A w/ Welded trigger bail



10.6. Parts list 06950A w/ Welded trigger bail

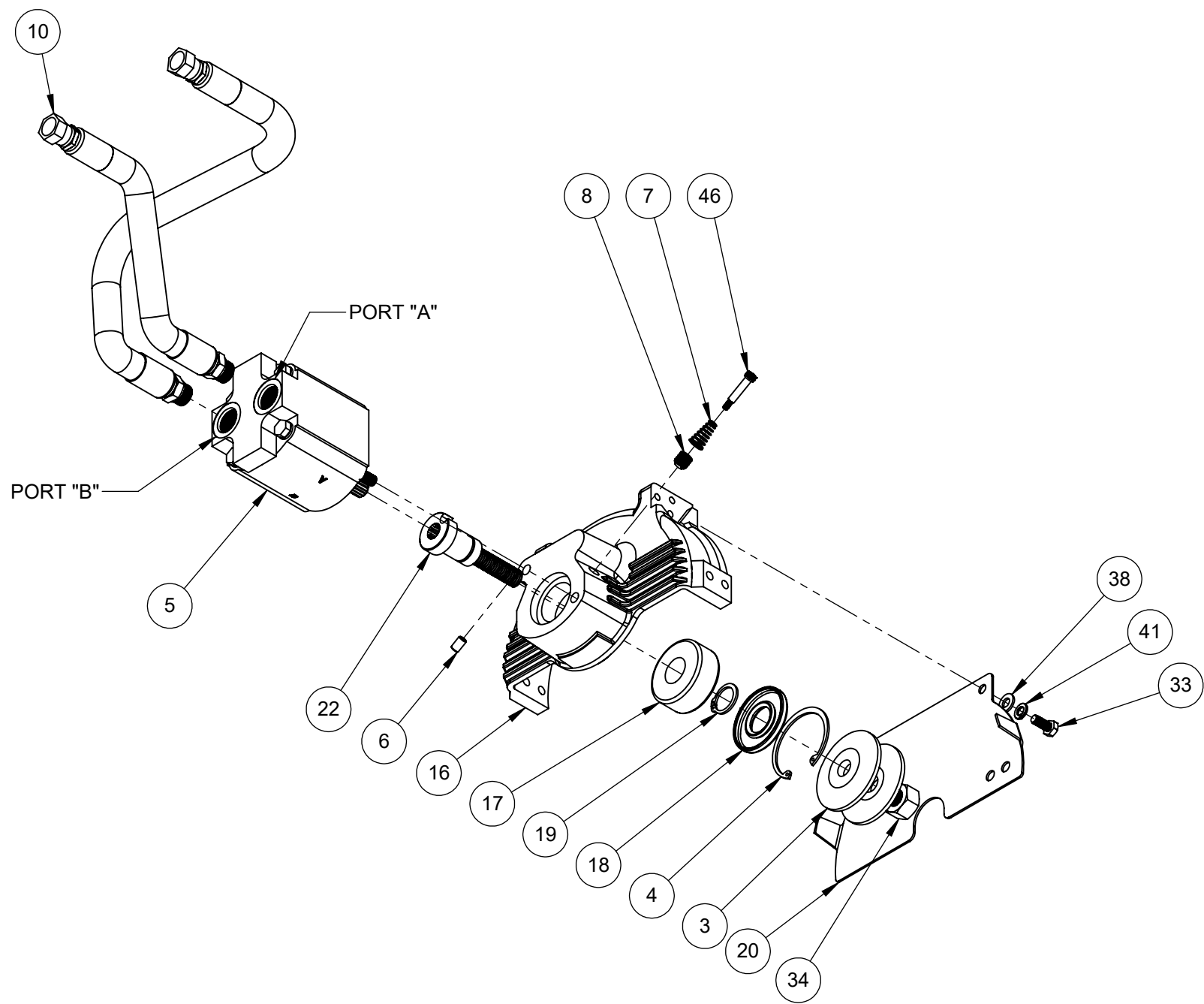
ITEM NO.	PART NO.	DESCRIPTION	QTY.
1	00145A	QUICK DISCONNECT COUPLER	1
2	00146A	QUICK DISCONNECT NIPPLE	1
3	00450	PIGTAIL HOSE ASSEMBLY	2
4	69-08-08	1/2 NPT x 1/2 NPT NIPPLE	2
5	A6910	DIA. 1/4 X 1 SHOULDER BOLT	1
6	06956	HANDLE	1
7	405-08-08	1/2 NPT x 1/2 MJIC 90 ELBOW	2
8	00412	LOCKING PIN	1
9	05436	PLUG	2
10	02599	INTERNAL SEAL KIT	1
11	00410B	TOP PORT MOTOR	1
12	06903A	RAIL GUIDE FRAME	1
13	02598	MOTOR SEAL KIT	1
14	03981	SAFETY LEVER	1
15	A2062	NUT INSERT	4
16	047001	DRIVE SHAFT CCW	1
17	046003	BEARING	1
18	046005	RETAINING RING	1
19	046004	SEAL	1
20	00403	INTERNAL RETAINING RING	1
21	05960	TRIGGER VALVE	1
22	00413	SPRING	1
23	00415	PLUG	1
24	046594	SAFETY LEVER SPRING	1
25	046001	STRAIGHT STONE GUARD	1
26	046006	STONE SHIELD	1
27	00402	FLANGE	2
28	A1436	5/8-11 HEAVY HEX NUT	1
29	A6306	1/4-20 x 1 FLAT HEAD BOLT	2
30	A2190	1/4 SAE FLAT WASHER	8
31	06909	RUB BLOCK	1
32	A1021	5/16-18 x 3/4 HEX HEAD BOLT	7
33	A3810	5/16 SAE LOCK WASHER	2
34	A2191	5/16 SAE FLAT WASHER	10
35	A6062	1/8 X 1 SPRING PIN	2
36	06901A	FRAME ASSEMBLY	1
37		OMIT	
38	01909	LOCK KNOB	1
39	A2192-N	NYLON WASHER	1
40	00795	FLOW CONTROL MANIFOLD	1
41	01627	SPRING	1
42	05954	ACTUATION BUTTON	1
43	231P-04	-4 SAE O-RING PLUG	2
44	A1009	1/4-20 X 2 3/4 HEX HEAD BOLT	2
45	A2046	1/4-20 NYLOCK NUT	2
46	00796	FLOW CONTROL CARTRIDGE VALVE	1
47		OMIT	
48		OMIT	
49		OMIT	
50	A6200	1/4" I.D. DETENT PIN	1
51	A2499	1/4-20 WING NUT	1
52	A5608	1/4-20 x 7/8 SOCKET HEAD SET SCREW	1
53	06910	WRENCH	1
54	06957A	SUPPORT BRACKET	1
55	06903-05	AXLE ASSEMBLY	1
56	06903-04	ROLLER	1
57	A1027	5/16-18 x 2 1/4 HEX HEAD BOLT	2
58	A1001	1/4-20 x 3/4 HEX HEAD BOLT	4
59	A2048	5/16-18 NYLOCK NUT	2
60	A3809	1/4 SAE LOCK WASHER	4

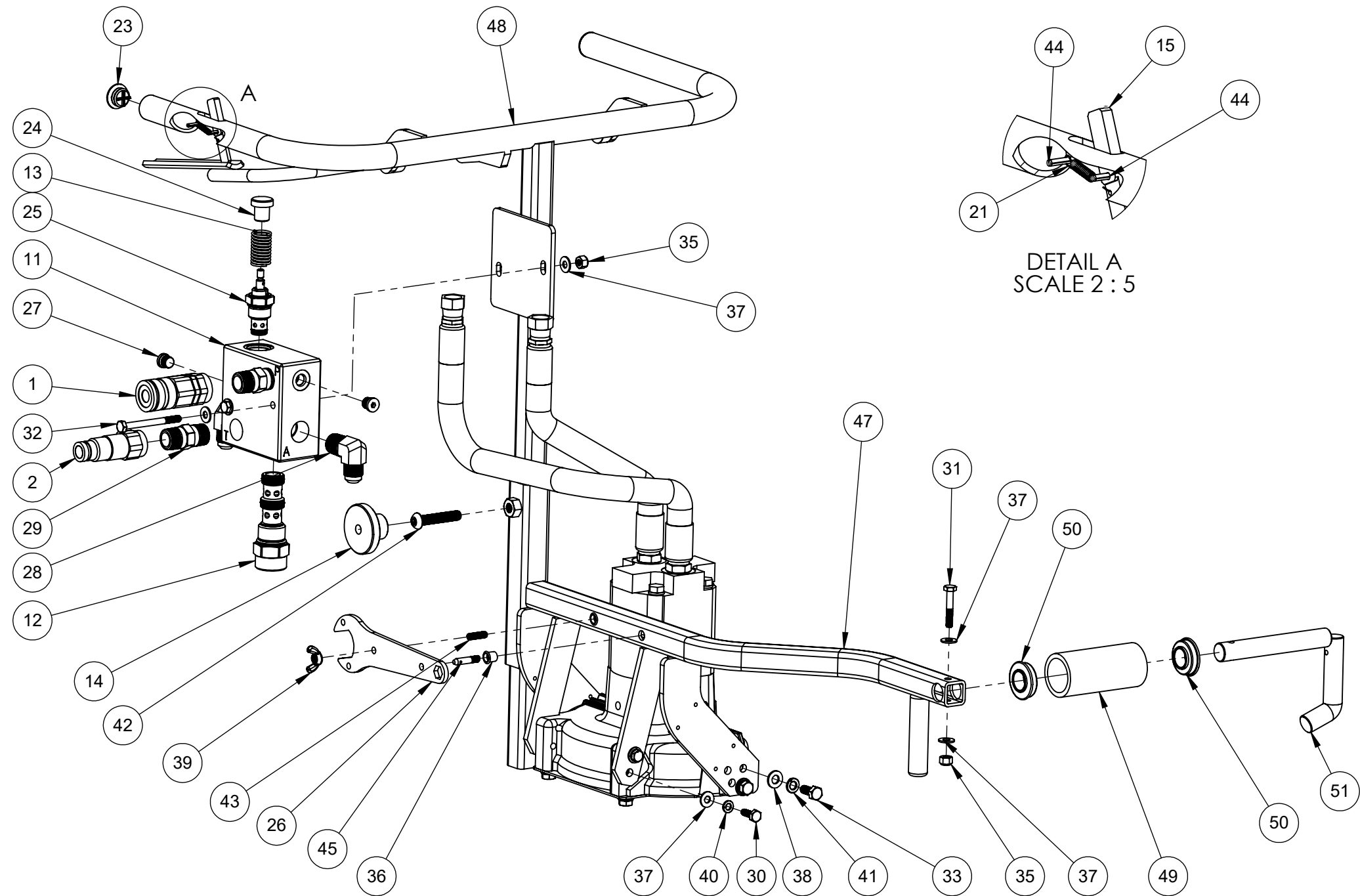
ITEM NO.	PART NUMBER	DESCRIPTION	QTY.
1	00145	QUICK DISCONNECT COUPLER	1
2	00146	QUICK DISCONNECT NIPPLE	1
3	00402	FLANGE	2
4	00403	INTERNAL RETAINING RING	1
5	00410B	TOP PORT MOTOR	1
6	00412	LOCKING PIN	1
7	00413	SPRING	1
8	00415	PLUG	1
10	00450	HOSE	2
11	00795	FLOW CONTROL MANIFOLD	1
12	00796	FLOW REGULATOR VALVE	1
13	01627	SPRING	1
14	03529	KNOB	1
15	03981	SAFETY LEVER	1
16	046001	HOUSING	1
17	046003	DRIVE SHAFT BEARING	1
18	046004	OIL SEAL	1
19	046005	EXTERNAL RETAINING RING	1
20	046006	STONE GUARD	1
21	046594	LOCK SPRING	1
22	047001	CCW DRIVE SHAFT	1
23	05439	PLASTIC PLUG	2



06950-TST

ITEM NO.	PART NUMBER	DESCRIPTION	QTY.
24	05954	PLUNGER	1
25	05960	TRIGGER VALVE	1
26	06910	OPEN END WRENCH	1
27	231P-04	-04 O-RING PLUG	2
28	405-08-08	1/2 NPT x -08 JIC 90 ELBOW	2
29	69-08-08	1/2 NPT x 1/2 NPT HEX NIPPLE	2
30	A1001	1/4-20 x 3/4 HEX HEAD BOLT	4
31	A1004	1/4-20 x 1 1/2 HEX HEAD BOLT	1
32	A1009	1/4-20 x 2 3/4 HEX HEAD BOLT	2
33	A1021	5/16-18 x 3/4 HEX HEAD BOLT	6
34	A1436	5/8-11 HEAVY HEX NUT	1
35	A2046	1/4-20 NYLOCK NUT	3
36	A2062	1/4-20 NUT CERT	2
37	A2190	1/4 SAE FLAT WASHER	10
38	A2191	5/16 SAE FLAT WASHER	6
39	A2499	1/4-20 WING NUT	1
40	A3809	1/4 LOCK WASHER	4
41	A3810	5/16 LOCK WASHER	6
42	A5475	3/8-16 x 2 BHCS	1
43	A5608	1/4-20 x 7/8 SET SCREW	1
44	A6062	DIA. 1/8 x 1 SPRING PIN	2
45	A6200	1/4 DETENT PIN	1
46	A6910	DIA. 1/4 x 1 SHOULDER BOLT	1
47	06945	FRAME	1
48	06946	HANDLE	1
49	06948	RAIL WHEEL TUBE	1
50	06949	BEARING	2
51	06947	AXLE ASSEMBLY	1





11. Disclaimer

Pandrol exempts itself from liability in the event of usage that deviates from that recommended in this manual.

12. Contact

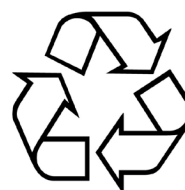
Address	Phone	Internet and E-mail
		www.Pandrol.com

13. Recycling and Environment

Sustainable environment is a great part of Pandrol.

All components of the product can either be:

- Recycled
- Taken care of
- Be re-used



We recommend you to follow your local region regulations of environmental and recycling policies.

PANDROL

Find out more at
pandrol.com

Pandrol

©Pandrol

Partners in excellence