

Re System

Fastening Systems



The Pandrol Re System rail fastening assembly delivers faster installation times and a reduced number of components compared to traditional e-Clip equivalents. This can lead to more productive engineering possessions for track refurbishment.

Re System rail pads are supplied with side-post insulators already attached. This reduces time and labour when laying out and installing components on site. Re System is also supplied with toe insulators already in place on the toe of the clip. This further reduces installation time and the number of loose components on site.

→ TECHNICAL FEATURES

Ready to retrofit

Pandrol's Re System can be easily retrofitted to existing Pandrol e-Clip and PR Clip assemblies.

Highly durable

With separated toe and side-post insulator functions, Re System provides greatly improved insulator durability.

Efficiency gains

The Re System delivers side-post insulators and rail pads as single components, to create valuable efficiencies:

- Fewer components to handle
- Opportunity to mechanise pad installation
- No need to individually place insulators
- Easier rail threading

Customised rail pads

Re System rail pads can be supplied in different materials and stiffness. Examples include EVA, grooved rubber, studded rubber and PU.

Heavy haul applications

Re System is also suitable for heavy haul applications. Please consult Pandrol for details.

Design Expertise

Re System is a rail fastening evolution based on decades of worldwide experience, and the unmatched knowledge and understanding of Pandrol engineers.

→ ADVANTAGES /

- The Pandrol Re System adopts the two-part insulator concept developed by Pandrol for the Fastclip system.

Separation of the insulator provides longer component life for this vital element of the rail fastening assembly. Insulator parts can be made from a range of materials to further tune track performance.



→ COMPONENTS /

1. Pandrol Re clip with integral toe insulator
2. Rail pad with integral side-post insulators
3. Cast SGI shoulder
(New or existing component)

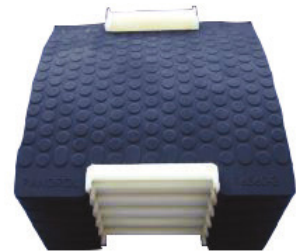
→ INSTALLATION PROCESS /

Pandrol Re System installs on new and existing concrete sleepers fitted with Pandrol e-clips or PR clips. It can also be installed on steel sleepers, baseplates and turnouts.

Re System is optimised for installation during rail change operations, where the fastenings are replaced. It is also suitable for loose sleeper replacement projects.



Special shaped pad with side-post insulator, for assisting rail threading.



Re System pads designed for easier packaging and potential automation.

→ INSTALLATIONS /



UK



Belgium

→ LEARN MORE



www.pandrol.com