



# Welder's straight edges RAP1000

APPROVAL SNCF N°DEO20062

USER'S MANUAL

19123022



42111034

January, 16, 2024

**Partners in excellence**



# Foreword

This user's manual is valid for the following products:

19123022: Welder's straight edges RAP1000 type

## Revisions historic

Version	Author	Author	Comments
00	16.01.24	FR	Document creation

# Summary

1.	General informations	4
1.1	About the notice	4
1.2	General requirements	4
1.3	Receiver of the operating instructions	4
1.4	Exclusion of liability	4
1.5	Intellectual property	5
2.	Description	6
3.	Use instructions	7
3.1	Storage	7
3.2	Handling	7
3.3	Use	7
4.	Maintenance	10
4.1	After-Sales Service	10
4.2	Environmental protection	10
4.3	Elimination	10
5.	Signalization	11
6.	Technical characteristics	12
7.	Spare parts	13

# 1. General informations

---

This user's manual is a translation of the French version. The French version will be decisive in case of litigation.

---

User or maintenance personnel must have read and understood these instructions for use.

The instructions must be always accessible and to all persons concerned.

## 1.1 About the notice

This user's manual has been drawn up according to the technical data applicable at the time of printing. Minor changes may occur as part of product improvement.

Technical data is given as an approximation.

The photos are non-contractual (modification of the machine, optional accessory, etc.)

## 1.2 General requirements

Labor laws applicable in the areas of use and the instructions relating to safety must be respected. In the event of non-compliance, the operator will assume full responsibility.

In the event of a discrepancy between the regulations at the operator those of the machine manufacturer and its supplier, the most stringent regulations will apply.

The purchaser is responsible for providing all equipment, consumables, and resources necessary for commissioning the product and training staff. The manufacturer of the product having no influence of the conditions of use and training of personnel, declines all responsibility for the application of the instructions and training received.

However, our After Sales Service is at your complete disposal to provide consulting, training, and other advisory services.

## 1.3 Receiver of the operating instructions

The instructions for use described in this user's manual enable the product to be used properly.

These instructions are written for the exclusive use of qualified personnel who have proven their ability to handle the product as well as product maintenance personnel.

## 1.4 Exclusion of liability

Any use of the product different from that indicated is non-compliant and endangers the life and health of personnel as well as the surrounding equipment.

PANDROL declines all liability in the event of bodily injury or material damage to the operator or third parties in the following cases:

- When the product is not used in accordance with instructions,



- If these instructions have not been read or understood by the user or the maintenance personnel or if the personnel are not sufficiently qualified.
- If the product has been used for an application other than that intended,
- If the product is used in condition outside the indicated limit values
- If the product is not maintained using original spare parts,
- If components and related element of the product are modified arbitrarily.

## 1.5 Intellectual property

The technical characteristics and construction features of the product constitute the intellectual property of PANDROL.

The copyright on this user's manual belongs to PANDROL. Any reproduction, publication, or any other mode of exploitation for competitive purposes of this user's manual is prohibited. The purchaser and operator of the product are prohibited from communicating its content to persons outside the company.



## 2. Description

The device has two functions:

- Adjusting of the level point,
- Adjusting of the alignment of the rail head and the web

# 3. Use instructions

## 3.1 Storage

The welder's straight edge must be stored in its storage case.

## 3.2 Handling

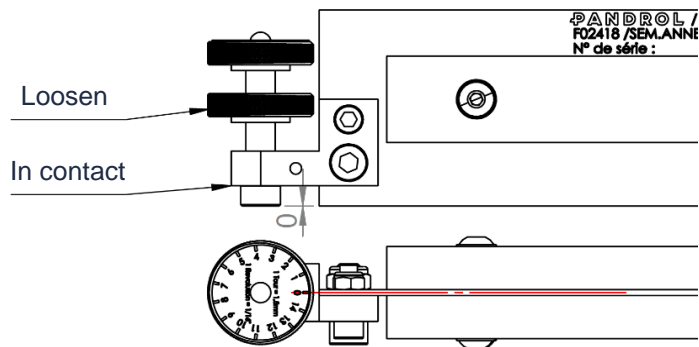
The welder's straight edge weighs 4 kg.

Its handling is carried out by 1 person.

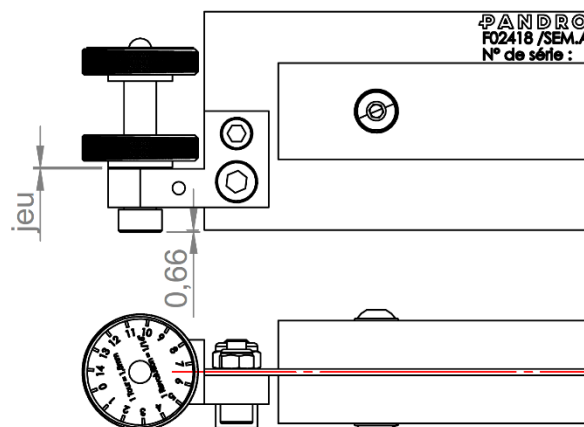
## 3.3 Use

### 3.3.1 Adjusting of the level point

- Loosen the locknut and bring the crew in contact with the rail.



- Turn the setting wheel in clockwise direction to give the value of the level point desired. For example, 0.66mm



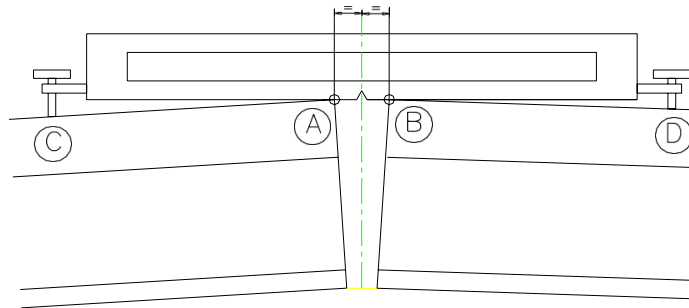
Read 0,66 mm.

- Turn the screws at both ends of the edge and lock with the locknut,
- The graduated wheel is an assistance, always check the given value with a set of thickness gauges,

- To control the level point, put the edge on top of the head rail. (The magnet holds the edge in place)



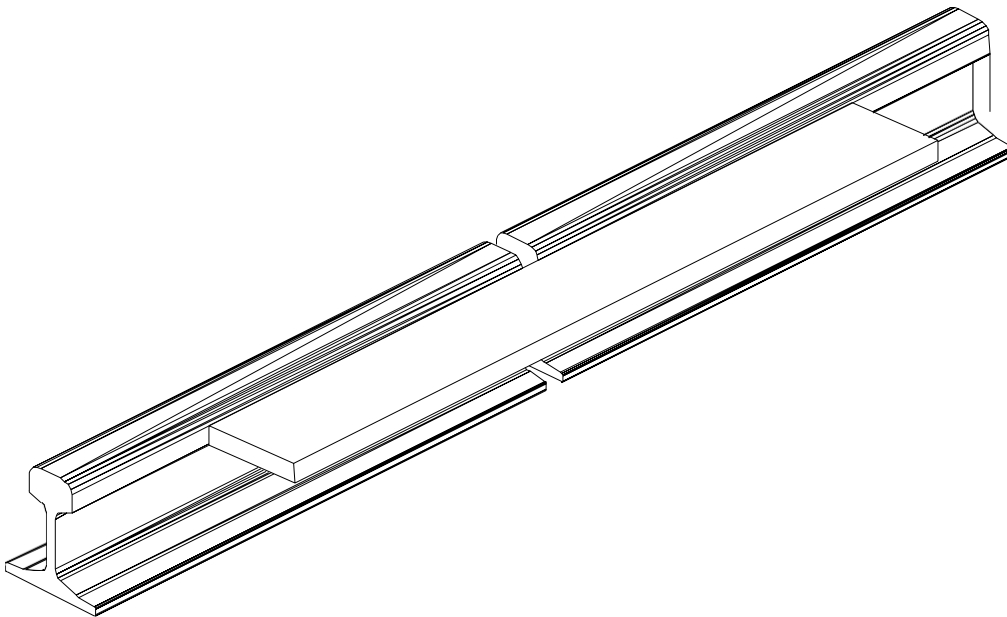
A wedge of 0.05 mm must not pass between point A, B, C, and D.



### 3.3.2 Checking the adjusting of the rail head alignment

Turn the edge. Put in contact in the inner side of the head rail.

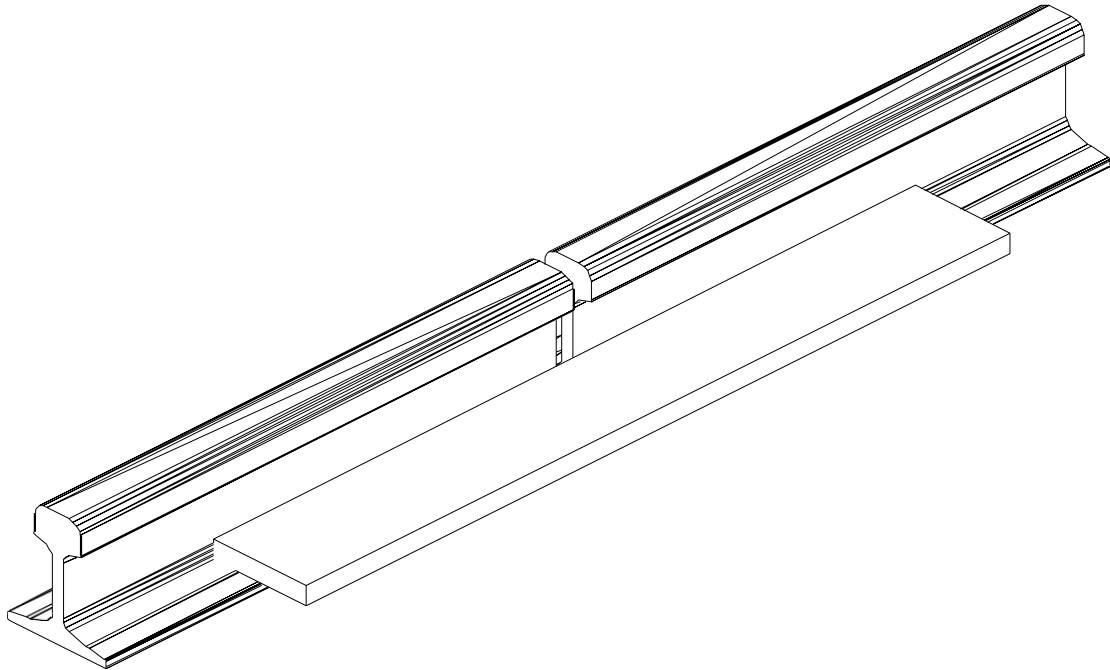
The edge must perfectly touch the rails, all along the surface.





### 3.3.3 Checking the alignment at the base of the web

Proceed as before by positioning the edge at the bottom of the web.



## 4. Maintenance

### 4.1 After Sales Service

Our After Sales Service can offer you blade sharpening (with certificate), a complete product overhaul, and replacement parts.

For all inquiries, please contact our After Sales Service at the following email address:

**[contact.sav@pandrol.com](mailto:contact.sav@pandrol.com)**

When making your request, please specify the machine reference, as well as its serial number and year of manufacture.

### 4.2 Environmental protection

For all works carried out with or on the machine, comply with legal obligations to limit and avoid waste. The management of this waste must be done in compliance with the environmental protection regulations in force in the country of use.

### 4.3 Elimination

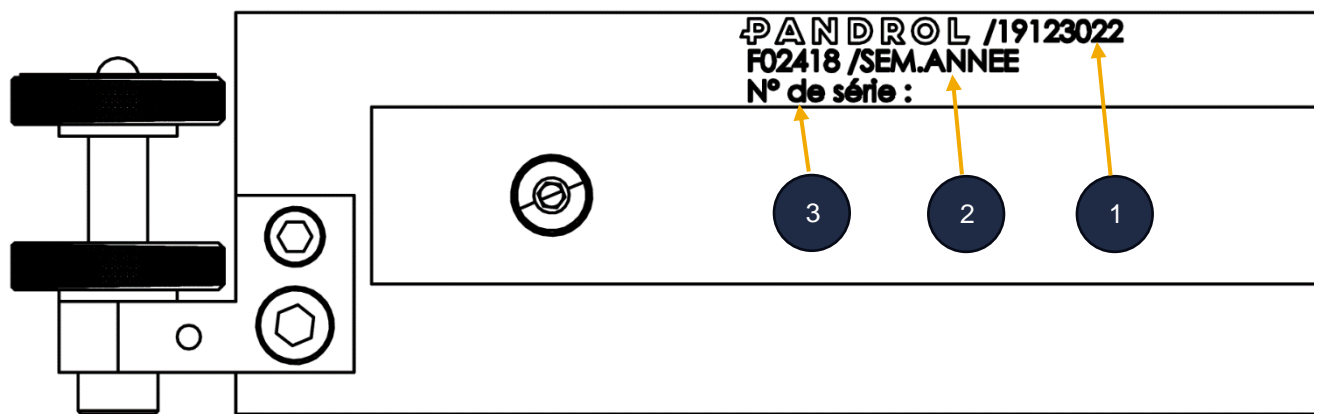
Due to risk of pollution for the environment, call on a specialized company to dismantle the machine.



## 5. Signalization

Our welder's straight edge with magnetic and adjustable stand benefits from traceability:

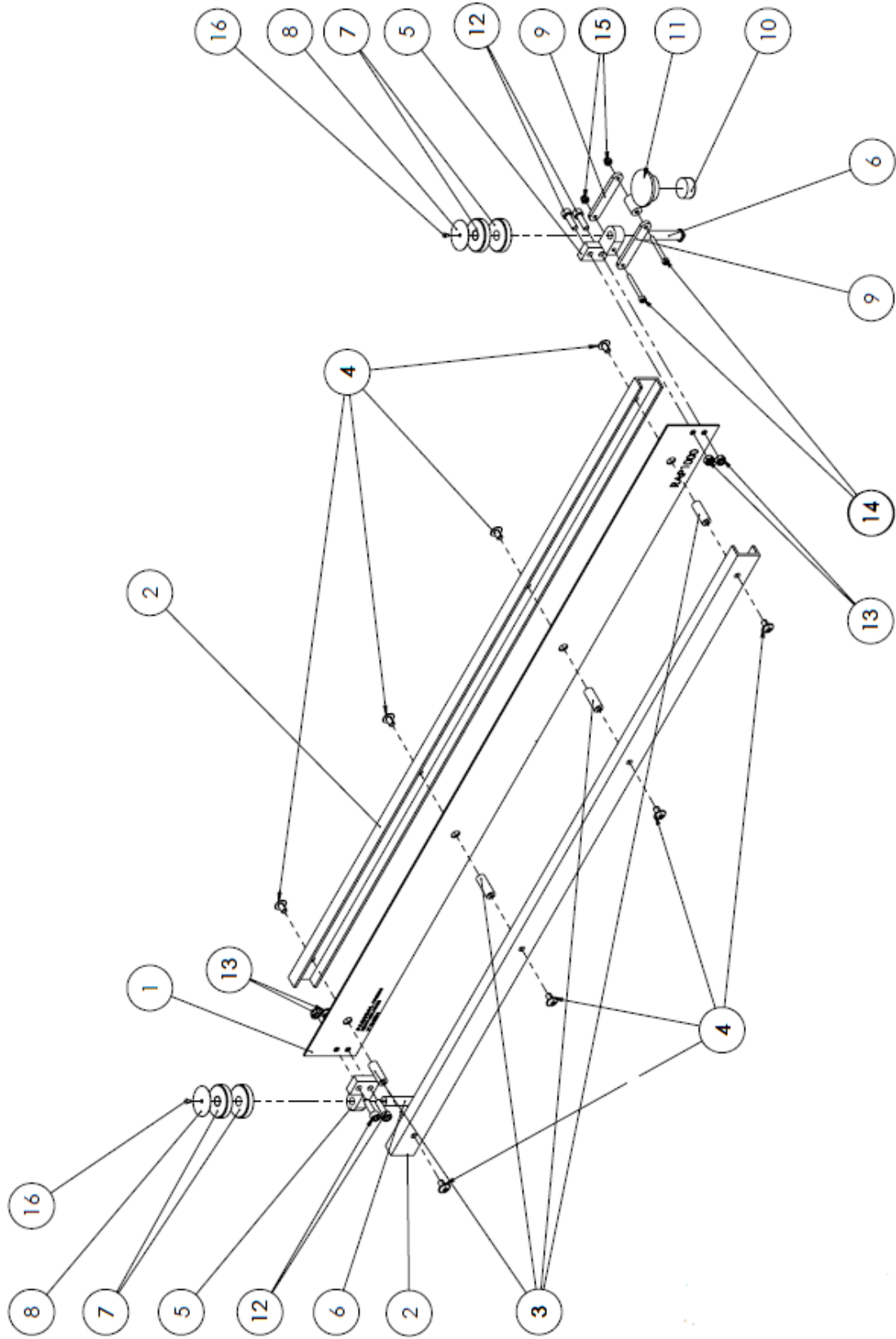
- Product reference 1
- Manufacturing reference 2
- Serial number 3



## 6. Technical characteristics

- Weight :4 Kg
- Dimensions :
  - Length: 1112 mm
  - Width: 68 mm
  - Height: 36 mm

# 7. Spare parts



Rep.	Qté	Réf	Désignation	Description
1	1	31410003	Feuillard	Strap
2	2	42504001	Longeron	Stringer
3	4	31210219	Entretoise	Spacer
4	8	41006065	Vis BHC à embase M6x10	Screw BHC M6x10
5	2	31910054	Support de vis de réglage	Support of set screw
6	2	31110435	Vis de réglage pour RAP1000	Set screw for RAP1000
7	4	40910008	Écrou moleté	Knurled nut
8	2	42291003	Étiquette graduation	Graduation label
9	2	35910140	Articulation	Articulation
10	1	42400019	Aimant	Magnet
11	1	35910174	Support d'aimant	Magnet support
12	4	41006004	Vis CHc M6x20	Screw CHc M6x20
13	4	40906006	Écrou HM6 nylstop	Nut HM6 nylstop
14	2	41004006	Vis CHc M4x35	Screw CHc M4x35
15	2	40904002	Écrou nylstop M4	Nut M4 nylstop
16	2	41502001	Rivet SIM 2_89x4_76	Rivet SIM

# PANDROL

Find out more at

[pandrol.com](https://pandrol.com)

Raismes  
Z.I. du bas Pré 59590 Raismes - France

+33 (0)3 27 22 26 26  
[infos.pandrol-fr@pandrol.com](mailto:infos.pandrol-fr@pandrol.com)

© Pandrol

**Partners in excellence**