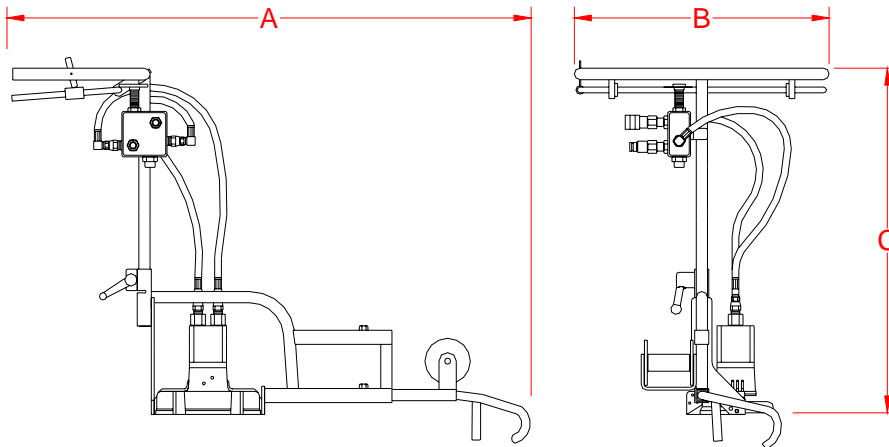


**06900 MULTI-PURPOSE GRINDER**  
w/ TRIGGER CABLE ASSEMBLY  
**06950 MULTI-PURPOSE GRINDER**  
w/ TRIGGER BAIL ASSEMBLY

The Pandrol Multi-Purpose Grinder allows operators to remain in an ergonomic upright position while performing multiple grinding tasks. Lightweight and with the adjustable positions of the grinding head and rail guide, multiple grinding tasks can be achieved easily all with this one tool. Field weld grinding, switch points and even frogs, this grinder can handle it all. The adjustable rear handle positions easily for the operators preferred height and comfort or lowered and swiveled around for compact storage.

patent no. 6,663,476



FLOW	PRESSURE	RPM	DIMENSIONS	WEIGHT
10 gpm (38 lpm)	2000 psi (140 bar)	4000	A - 40" B - 24" C - 34"	36 lbs (16.36kg)

**ACCESSORIES:**  
00499 - GRINDING STONE



## GENERAL SAFETY PRECAUTIONS:

TOOL OPERATORS AND MAINTENANCE PERSONNEL MUST ALWAYS COMPLY WITH THE SAFETY PRECAUTIONS GIVEN IN THIS MANUAL, AND WITH ALL STICKERS AND TAGS ATTACHED TO THE TOOL AND HOSE. ALL SAFETY PRECAUTIONS ARE GIVEN FOR YOUR SAFETY. READ TO UNDERSTAND AND FOLLOW ALL SAFETY, MAINTENANCE AND OPERATION INSTRUCTIONS BEFORE YOU USE OR MAINTAIN THE TOOL. REVIEW THE MANUAL DAILY BEFORE USING THE TOOL. IN ADDITION, FOLLOW ALL SAFETY GUIDELINES GIVEN YOU BY YOUR SUPERVISOR. DO NOT USE THE TOOL IF YOU HAVE ANY QUESTIONS ABOUT THE OPERATION, SAFETY OR MAINTENANCE OF THIS TOOL. FAILURE TO FOLLOW THESE INSTRUCTIONS CAN RESULT IN PERSONAL INJURY OR EQUIPMENT DAMAGE.

PANDROL HAS NO CONTROL OVER TOOL USE OR OPERATION ONCE IT LEAVES THE PANDROL PLANT. PANDROL HAS NO CONTROL OVER OPERATOR OR MAINTAINER SELECTION. THE CUSTOMER MUST ASSUME RESPONSIBILITY FOR THE TOOL'S SUITABILITY FOR A PARTICULAR FUNCTION. DURING USE OF TOOL, GOOD JUDGEMENT MUST BE USED TO WORK SAFELY AND EFFICIENTLY WITHOUT ENDANGERING THEMSELVES OR BYSTANDERS. UNDERSTANDING OF THE OPERATION AND MAINTENANCE MANUAL IS ESSENTIAL FOR ANYONE USING OR MAINTAINING THE TOOL.

- DO NOT OPERATE THE TOOL UNTIL YOU HAVE BEEN THOROUGHLY AND PROPERLY TRAINED OR UNDER THE SUPERVISION OF AN INSTRUCTOR.
- CHECK POWER SOURCE DAILY TO DETERMINE IF CORRECT FLOW AND PRESSURE ARE AVAILABLE. NEVER EXCEED FLOWS OR PRESSURES FOR THE TOOL BEING USED. PERSONAL INJURY OR DAMAGE TO THE TOOL CAN RESULT.
- OPERATORS MUST CLEAR THE WORK AREA OF NONESSENTIAL PERSONNEL. FLYING DEBRIS CAN CAUSE SERIOUS INJURY.
- THE OPERATOR MUST BE FAMILIAR WITH ALL PROHIBITED WORK AREAS SUCH AS UNSAFE GRADES, POOR FOOTING AREAS AND OVERHEAD HAZARDS.
- MAINTAIN BALANCE AND PROPER FOOTING AT ALL TIMES. NEVER OVERREACH TO THE EXTENT THAT A BROKEN PART OR SUDDEN MOVEMENT OF THE TOOL CAN CAUSE YOU TO LOSE YOUR BALANCE AND FALL, OR CAUSE INJURY TO YOUR SELF OR SOMEONE ELSE.

- WHEN WORKING NEAR ELECTRICAL CONDUCTORS, ALWAYS ASSUME THAT THE CONDUCTORS ARE ENERGIZED AND THAT HOSES AND CLOTHING CAN CONDUCT HARMFUL ELECTRICITY. USE HOSES LABELED AND CERTIFIED AS NONCONDUCTIVE.
- DO NOT OPERATE THE TOOL AT EXCESSIVE FLUID TEMPERATURES OPERATOR DISCOMFORT AND POTENTIAL BURNS CAN RESULT AT HIGH OIL TEMPERATURES.
- NEVER WEAR LOOSE CLOTHING THAT CAN GET ENTANGLED IN THE WORKING PARTS OF THE TOOLS OR BE CARELESS WITH HANDS, FEET OR OTHER BODY PARTS AROUND THE WORKING PARTS OF THE TOOLS. HYDRAULIC TOOLS EXERT HIGH TORQUE AND FORCE AND CAN CAUSE SERIOUS INJURY OR DEATH IF IMPROPERLY USED.
- TO AVOID PERSONAL INJURY OR EQUIPMENT DAMAGE, ALL TOOL REPAIR, MAINTENANCE OR SERVICE MUST ONLY BE PERFORMED BY AUTHORIZED AND PROPERLY TRAINED PERSONNEL.
- ALWAYS WEAR SAFETY EQUIPMENT SUCH AS OIL INJECTION RESISTANT WORK GLOVES, SAFETY GLASSES, SAFETY BOOTS, EAR PROTECTION AND OTHER SAFETY APPAREL DICTATED BY YOUR SUPERVISOR APPLICABLE FOR THE JOB YOU ARE DOING AND THE TOOL YOU ARE USING.
- DO NOT CLEAN INSPECT OR REPAIR THE TOOL WHILE CONNECTED TO THE POWER SOURCE. ACCIDENTAL ENGAGEMENT OF THE TOOL CAN CAUSE SERIOUS PERSONAL INJURY.
- OIL INJECTION HAZARD EXISTS WITH THIS TOOL. OIL INJECTION IS A CONDITION WHERE HYDRAULIC OIL IS INJECTED UNDER THE SKIN FROM PRESSURE IN THE LINE. ALWAYS WEAR GLOVES AND REPAIR ANY LEAKS IMMEDIATELY. NEVER CARRY A TOOL BY THE HOSES.
- DO NOT USE DAMAGED EQUIPMENT. IMMEDIATELY REPLACE ANY DAMAGED HOSES, FITTINGS, OR OTHER COMPONENTS SHOWING WIRE BRAID, NICKS, CUTS, DAMAGE OR ABRASIONS. FAILURE TO DO SO MAY RESULT IN EQUIPMENT DAMAGE AND / OR PERSONAL INJURY OR DEATH.
- CLEAN UP ANY OIL OR FLUID SPILLS IMMEDIATELY.

HAVE SUPERVISOR ADD ADDITIONAL PRECAUTIONS RELATING TO THE SPECIFIC  
WORK AREA AND LOCAL SAFETY REGULATIONS BELOW:

- \*
- \*
- \*
- \*
- \*
- \*
- \*
- \*
- \*
- \*
- \*
- \*
- \*
- \*
- \*
- \*
- \*
- \*
- \*
- \*
- \*

## **SAFETY PRECAUTIONS:**

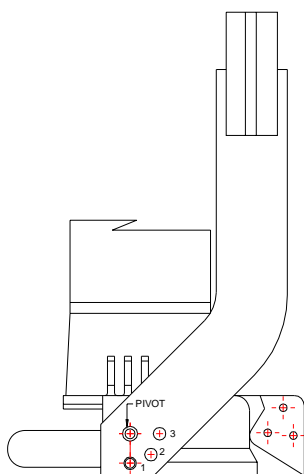
1. **ALWAYS** WEAR PROTECTIVE EQUIPMENT SUCH AS GLOVES, SAFETY GLASSES, EAR PROTECTION AND SAFETY SHOES.
2. DO NOT WEAR CLOTHING WHICH MAY BECOME ENTANGLED IN THE TOOL.
3. **ALWAYS** KEEP WORK AREA FREE OF TOOLS OR ANY OTHER OBJECTS WHICH MAY IMPAIR SOUND FOOTING.
4. **CAUTION** OIL INJECTION HAZARD EXISTS WITH THIS TOOL. OIL INJECTION IS A CONDITION WHERE THE HYDRAULIC OIL IS FORCED UNDER THE SKIN THROUGH PRESSURE IN THE LINE. ALWAYS WEAR GLOVES, DO NOT CARRY THE TOOL BY HYDRAULIC HOSES, AND REPAIR LEAKS IMMEDIATELY..
5. **NEVER** CHANGE STONES WITH THE POWER SOURCE VALVE(S) IN THE “**ON**” POSITION, TURN THE POWER SOURCE “**OFF**”.
6. **NEVER** ATTEMPT TO CARRY THE GRINDER WITH THE POWER SOURCE IN THE “**ON**” POSITION, TURN THE POWER SOURCE “**OFF**”.
7. **NEVER** TOUCH OR TRY TO STOP A MOVING STONE.
8. **ALWAYS** CHECK THE WORK AREA FOR ANY TRASH WHICH MAY IGNITE FROM SPARKS.
9. **ALWAYS** CHECK THE AREA FOR SMOLDERING TIES OR TRASH BEFORE LEAVING THE SITE.
10. WHEN CHANGING STONES, FOLLOW ALL GRINDING STONE MANUFACTURERS INSTRUCTIONS FOR SAFETY AND OPERATION. USE ONLY STONES THAT COMPLY WITH ANSI STANDARDS. BEFORE USING, RUN NEW GRINDING STONE FOR ONE MINUTE AT FULL SPEED TO CHECK FOR DEFECTS OR VIBRATION.
11. MOST HYDRAULIC OILS HAVE A FLASH POINT OF APPROXIMATELY 450 DEGREES (F). MAKE SURE HOSES ARE COMPLETELY CLEAR OF SPARKS AND HOT DEBRIS. HAVE ANOTHER PERSON STAND CLOSE TO HYDRAULIC POWER SOURCE CONTROLS TO OBSERVE OPERATION AND FOR EMERGENCY SHUTDOWN IF NECESSARY.

## 06900 MULTI-PURPOSE GRINDER

**FLOW:** 10 GPM (38 LPM)  
**PRESSURE:** 2000 PSI (140 BAR)  
**ROTATION:** COUNTER CLOCKWISE  
**RPM:** 4000

### OPERATION:

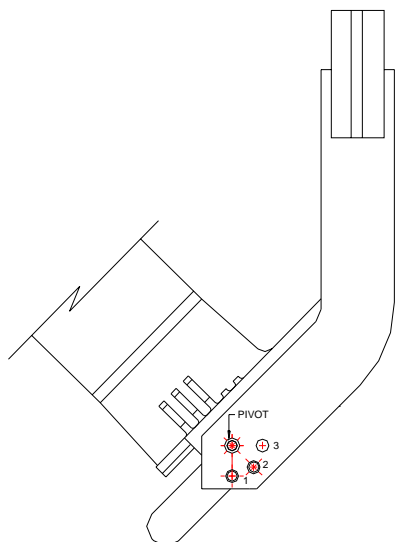
1. WITH THE POWER SOURCE IN THE "OFF" POSITION, CONNECT THE HOSES. DO NOT DRAG THE SERVICE HOSE BY PULLING WITH THE TOOL. LOOP THE SERVICE HOSE IN THE WORK AREA IN SUCH A WAY TO RELIEVE STRESS ON THE HOSE AND QUICK DISCONNECT FITTINGS WHILE WORKING. BE AWARE OF HOSE LOCATION AT ALL TIMES.
2. CONNECT THE TOOL TO THE POWER SOURCE.
3. GRASP THE TOOL **FIRMLY** BEFORE TURING ON THE VALVE OR ENGAGING THE TRIGGER. THERE WILL BE A SLIGHT TORQUE REACTION WHEN THE STONE IS ACTIVATED.



### GRINDING HEAD POSITION

#### POSITION 1

THE STONE IS IN THE HORIZONTAL POSITION. THE HOOK IS ALSO USED IN THIS POSITION. THIS POSITION IS PRIMARILY USED FOR COMPLETE THERMITE WELD, PROFILE BLENDING AND REMOVAL.



#### POSITION 2

THE STONE IS IN THE 45 DEGREE POSITION. THE WHEEL WITH THE BOTH FLANGES IS USED. THIS POSITION IS PRIMARILY USED FOR SWITCH UNDER CUTTING AND ROLL OVER REMOVAL.

**Pandrol**

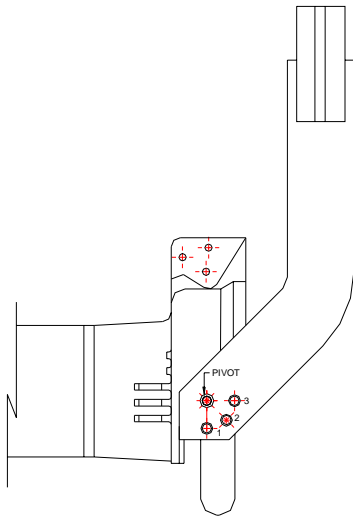
**PHONE:(419) 592-5050**

**FAX:(419) 599-3630**

*Pandrol reserves the right to change parts, features, or specifications without notice.*

10/19

## 06900 MULTI-PURPOSE GRINDER

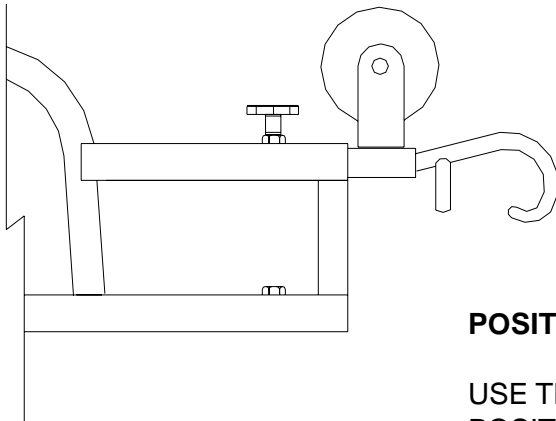


### POSITION 3

THE STONE IS IN THE VERTICAL POSITION. THE WHEEL AND ONE FLANGE IS USED. THIS POSITION IS PRIMARILY USED FOR FROG POINT AND ROLL OVER GRINDING.

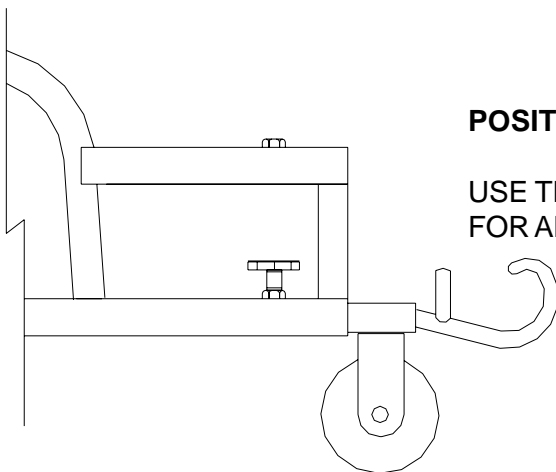
**NOTE:** USE BOTH FLANGES ON THE RAIL WHEEL IN THIS POSITION FOR STRAIGHT RAIL ROLL OVER GRINDING.

### RAIL GUIDE POSITION



### POSITION 1

USE THE RAIL HOOK IN THE DOWN POSITION FOR FIELD WELD GRINDING.



### POSITION 2

USE THE RAIL HOOK IN THE UP POSITION FOR ALL OTHER GRINDING APPLICATIONS.



## 06900 MULTI-PURPOSE GRINDER

### **MAINTENANCE:**

1. CHECK TOOL **DAILY** FOR PROPER OPERATION, LEAKS, OR DAMAGE.
2. INSPECT HOSES **DAILY**. REPLACE CUT, BURNED, OR OTHERWISE DAMAGED HOSES.
3. KEEP QUICK DISCONNECT COUPLERS **CLEAN AND LUBRICATED**.
4. USE HYDRAULIC FLUIDS THAT COMPLY WITH HTMA SPECIFICATION 5.7, THE HYDRAULIC FLUID SHOULD HAVE A VISCOSITY BETWEEN 100 AND 400 SSU (20-82 CENTISTOKES) AT THE MAXIMUM AND MINIMUM EXPECTED OPERATING TEMPERATURES. PETROLEUM BASED HYDRAULIC FLUIDS WITH ANTI-WEAR PROPERTIES AND A VISCOSITY INDEX OF OVER 140 WORK FOR A WIDE RANGE OF OPERATING CONDITIONS.

#### **THE FOLLOWING OILS MEET HTMA SPECIFICATION 5.7:**

AMOCO RYKON MV

CITGO A/W ALL TEMP

SUNVIS 706

MOBIL D.T.E. 13

CHEVRON EP-MV

TEXACO "RANDO" HDAZ

OTHER FLUIDS THAT MEET OR EXCEED THIS SPECIFICATION CAN BE USED.

\*SEE COLD WEATHER OPERATION HYDRAULIC OIL NOTE.

5. HAVE TOOL INSPECTED, AT LEAST ANNUALLY, BY PANDROL OR A PANDROL QUALIFIED SERVICE REPRESENTATIVE TO DETERMINE IF TOOL IS IN NEED OF SAFETY CHANGES OR WORN PART REPLACEMENT.
6. CONTACT PANDROL ON A PERIODIC BASIS, AT LEAST ANNUALLY, FOR SERVICE BULLETINS, SAFETY NOTICES, OR OTHER IMPORTANT INFORMATION PERTAINING TO THIS TOOL.

### **COLD WEATHER OPERATION:**

HYDRAULIC SYSTEM PERFORMANCE IS AFFECTED WHEN THE TEMPERATURE DROPS BELOW 50 F. THEREFORE MEASURES SHOULD BE TAKEN TO PRE-WARM TOOLS AND FLUIDS BEFORE OPERATING.

## 06900 MULTI-PURPOSE GRINDER

### **CHANGING THE GRINDING STONE:**

- 1.) **DISCONNECT** THE TOOL FROM THE POWER SOURCE.
- 2.) ROTATE THE STONE SLOWLY BY HAND WHILE **DEPRESSING** THE SHAFT LOCKING PIN MECHANISM (LOCATED ON THE SIDE OF THE GUARD CASTING).
- 3.) WHEN THE PIN ENGAGES, LOCKING THE SHAFT, REMOVE THE NUT HOLDING THE STONE AND FLANGES TO THE SHAFT
- 4.) **INSTALL** THE NEW STONE. BE SURE THAT THE FLANGES HAVE BEEN REPLACED AND THAT THE GRINDING STONE IS EQUIPPED WITH A BLOTTER.
- 5.) TIGHTEN THE NUT ON THE SHAFT. **DO NOT OVER TIGHTEN** AS THIS MAY CAUSE THE STONE TO FAIL WHILE IN USE.
- 6.) RELEASE THE LOCKING MECHANISM AND CHECK TO MAKE SURE IT IS RELEASED FROM THE SHAFT **BEFORE** BEGINNING TO USE.
  - ***REFER TO MANUFACTURER'S SPECIFICATIONS FOR TORQUE SETTINGS ON STONE ATTACHMENT***

### **GENERAL NOTES:**

## **REVIEW OF HYDRAULIC PRINCIPLES**

### **A. TOOL CIRCUIT**

#### 1. HYDRAULIC FORMULAS:

$$\text{GPM} = \frac{\text{CID} \times \text{RPM}}{231} \qquad \text{HP} = \frac{\text{GPM} \times \text{PSI}}{1714 (.85)}$$

1456.9

Example: HP required to deliver 10 GPM at 1500 PSI.

$$\frac{10 \text{ GPM} \times 1500 \text{ PSI}}{1456.9} = \frac{15000}{1456.9} = 10.3 \text{ HP}$$

(subtract back pressure for tool HP)

#### **Estimated HP delivered by pump or used by tool.**

	PSI					
GPM	500	1,000	1,500	2,000	2,500	3,000
3	1.03	2.06	3.09	4.12	5.15	6.18
5	1.72	3.43	5.15	6.86	8.58	10.30
10	3.43	6.86	10.3	13.70	17.20	20.60
15	5.15	10.30	15.40	20.60	25.70	30.90

#### 2. BACK PRESSURE

BACK PRESSURE MEASURED AT THE TOOL RETURN PORT MUST NOT EXCEED THE MANUFACTURERS BACK PRESSURE RATING. MOST MANUFACTURERS LIST THE MAXIMUM BACK PRESSURE FOR THEIR HYDRAULIC TOOLS AT 250 PSI. BACK PRESSURE MEASURED ON THE RETURN SIDE OF THE TOOL IS THE FORCE REQUIRED TO GET THE OIL BACK TO THE TANK. IN ALMOST ALL CASES THE LOWER THE BACK PRESSURE THE BETTER THE TOOL PERFORMANCE. FIRST, THE BACK PRESSURE IS SUBTRACTED FROM THE MAXIMUM TOOL PRESSURE TO ARRIVE AT A MAXIMUM TOOL OPERATING PRESSURE. FOR EXAMPLE, TOOLS WITH 2000 PSI OPERATING PRESSURE ARE INSTALLED ON A SYSTEM WITH 250 PSI BACK PRESSURE. THIS LEAVES 1750 PSI AS A MAXIMUM TOOL PRESSURE. IMAGINE A SYSTEM WITH 500 PSI BACK PRESSURE. 2000 MINUS 500 PSI BACK PRESSURE LEAVES ONLY 1500 PSI FOR THE TOOL. SECOND, TOOLS ARE DESIGNED FOR PRESSURE TO BUILD ON THE PRESSURE SIDE OF THE TOOL. IF TOO MUCH PRESSURE BUILDS ON THE RETURN SIDE, NOT ONLY IS PERFORMANCE EFFECTED, BUT SEALS MAY BLOW. THIS IS WHY IT IS VERY IMPORTANT TO DIRECT THE FLOW INTO THE TOOL CORRECTLY. REVERSING THE HOSES TO TEST MAY RESULT IN BLOWN SEALS, DAMAGE TO THE TOOL, AND PERSONAL INJURY.

This diagram is an exploded view of a mechanical assembly, likely a pump or motor unit. It shows the following components and their assembly sequence:

- Base and Frame:** Includes the main base (11), a side plate (12), and a rear plate (13). The base is secured with screws (14, 15, 16, 17, 18, 19, 20, 21, 22, 23, 24, 25, 26, 27, 28, 29, 30, 31, 32, 33, 34, 35, 36, 37, 38, 39, 40, 41, 42, 43, 44, 45, 46, 47, 48, 49, 50, 51, 52, 53, 54, 55, 56, 57, 58, 59, 60, 61, 62, 63, 64, 65, 66, 67).
- Internal Components:** Includes a central shaft (1), a rotor (2), a stator (3), and a pump head (4). The pump head is secured with a cover (5) and a gasket (6).
- Accessories:** Includes a wrench (64) and a screwdriver (65).

The diagram uses dashed lines to indicate the assembly path and alignment of the parts.

10/19

**06900  
MULTI-PURPOSE  
GRINDER**

ITEM NO.	PART NO.	DESCRIPTION	QTY.
1	00145	QUICK DISCONNECT COUPLER	1
2	00146	QUICK DISCONNECT NIPPLE	1
3	00816	PIGTAIL HOSE ASSEMBLY	2
4	355-08-06	3/8 x 1/2 NPT 45 ELBOW	2
5	A6910	DIA. 1/4 X 1 SHOULDER BOLT	2
6	045036	BELLOWS SEAL	1
7	045037	GUIDE BUSHING	1
8	00412	LOCKING PIN	2
9	231P-02	#2 STRAIGHT PLUG	4
10	01631	INTERNAL SEAL KIT	1
11	00410A	TOP PORT MOTOR	1
12	06903	RAIL GUIDE FRAME	1
13	01612	MOTOR SEAL KIT	1
14	06912A	RAIL WHEEL	1
15	06908	WHEEL PIN	1
16	A2062	NUT INSERT	2
17	047001	DRIVE SHAFT CCW	1
18	046003	BEARING	1
19	046005	RETAINING RING	1
20	046004	SEAL	1
21	00403	INTERNAL RETAINING RING	1
22	045021	TRIGGER VALVE	1
23	00413	SPRING	1
24	00415	PLUG	1
25	06328	KNOB	1
26	046001	STRAIGHT STONE GUARD	1
27	046006	STONE SHIELD	11
28	00402	FLANGE	2
29	A1436	5/8-11 HEAVY HEX NUT	1
30	A1002	1/4-20 X 1 GR 5 ZP	2
31	A2190	1/4 SAE FLAT WASHER	4
32	06909	RUB BLOCK	1
33	A1021	5/16-18 X 3/4 GR 5 ZP	4
34	A3810	5/16 LOCK WASHER	2
35	A2191	5/16 SAE FLAT WASHER	4
36	A6925	DIA. 3/8 X 5/16 SHOULDER BOLT	2
37	06901	FRAME ASSEMBLY	1
38	00160	HANDLE GRIP	2
39	06906	CONDUIT GRIP	1
40	01909	LOCK KNOB	1
41	A2192-N	NYLON WASHER	1
42	A6351	1/4-20 X 1 BHCS	1
43	A1450	1/4-20 JAM NUT	2
44	06904	TRIGGER	1
45	046501	MANIFOLD	1
46	06902	HANDLE ASSEMBLY	1
47	046503	TOP PLATE	1
48	046507	CABLE SPACER	1
49	06907	TRIGGER CABLE	1
50	A2046	1/4-20 NYLOCK NUT	2
51	00108-01	RAIL WHEEL FLANGE	2
52	046502	PLUNGER LEVER	1
53	046509	BUSHING	1
54	A6355	1/4-20 X 1 3/4 BHCS	1
55	A6350	1/4-20 X 3/4 BHCS	1
56	A1052	3/8-16 X 3 1/2 GR 5 ZP	2
57	A1054	3/8-16 X 4 GR 5 ZP	2
58	A2192	3/8 SAE FLAT WASHER	4
59	06905	CABLE CLIP	1
60	A6349	1/4-20 X 5/8 BHCS	3
61	06911	WHEEL FLANGE KEEPER	1
62	A2499	1/4-20 WING NUT	1
63	A5608	1/4-20 X 7/8 SET SCREW	1
64	06910	WRENCH	1
65	02940	ADJUSTMENT NUT	1
66	02919	CABLE STOP	1
67	A5500	#8-32 X 1/4 SET SCREW	1

**Pandrol**

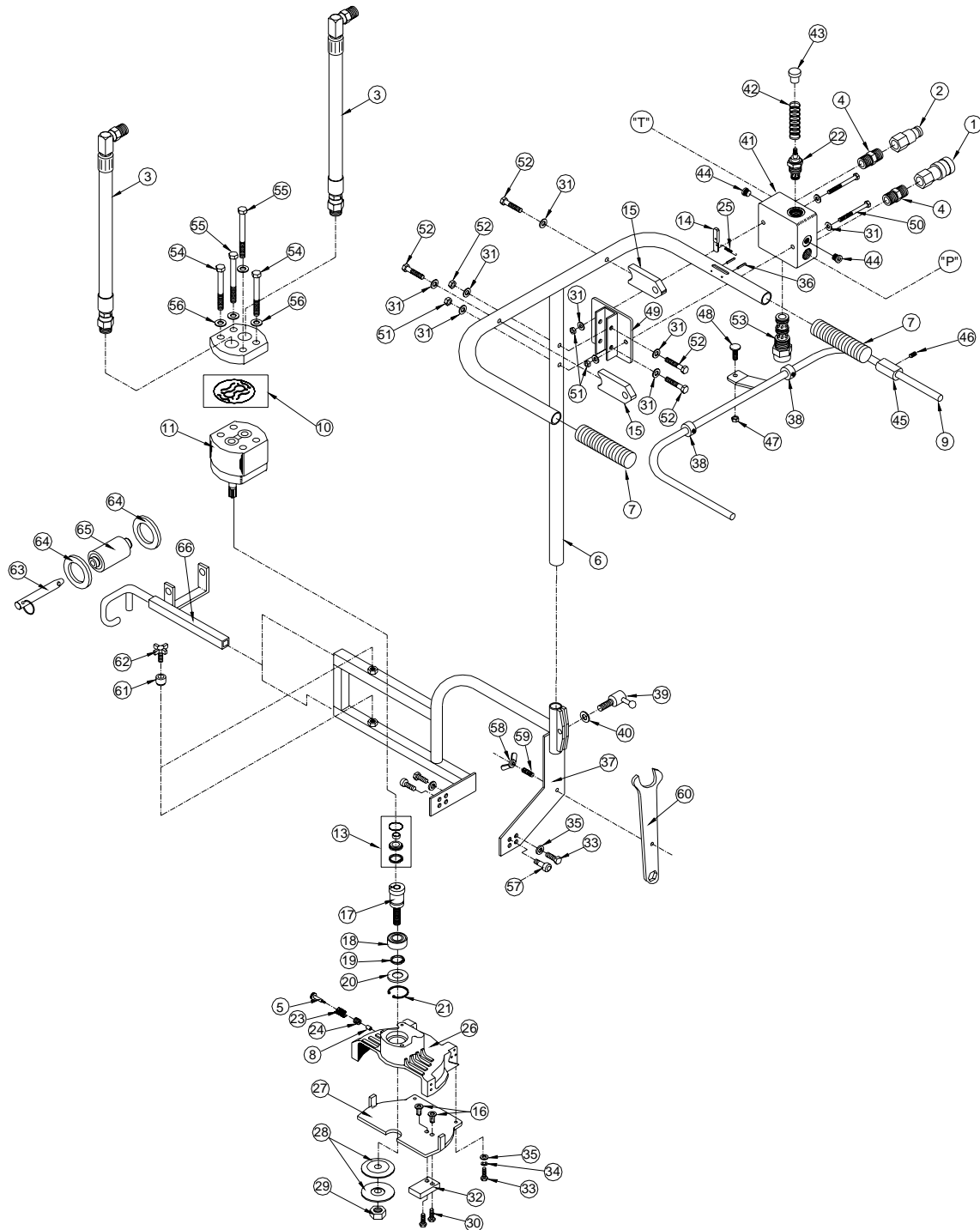
**PHONE:(419) 592-5050**

**FAX:(419) 599-3630**

*Pandrol reserves the right to change parts, features, or specifications without notice.*

10/19

**06950**  
**MULTI-PURPOSE GRINDER**  
**w/ BOLT-ON TRIGGER BAIL**



**Pandrol**

**PHONE:(419) 592-5050**

**FAX:(419) 599-3630**

*Pandrol reserves the right to change parts, features, or specifications without notice.*

10/19

**06950**  
**MULTI-PURPOSE GRINDER**  
**w/ BOLT-ON TRIGGER BAIL**

ITEM NO.	PART NO.	DESCRIPTION	QTY.
1	00145	QUICK DISCONNECT COUPLER	1
2	00146	QUICK DISCONNECT NIPPLE	1
3	00816	PIGTAIL HOSE ASSEMBLY	2
4	69-08-08	1/2 MP X 1/2 MP NIPPLE	2
5	A6910	DIA. 1/4 X 1 SHOULDER BOLT	1
6	06956	HANDLE	1
12	06903	RAIL GUIDE FRAME	1
13	01612	MOTOR SEAL KIT	1
14	03981	SAFETY LEVER	1
15	06953	TRIGGER MOUNTING BLOCK	2
16	A2062	NUT INSERT	4
17	047001	DRIVE SHAFT CCW	1
18	046003	BEARING	1
19	046005	RETAINING RING	1
20	046004	SEAL	1
21	00403	INTERNAL RETAINING RING	1
22	05960	TRIGGER VALVE	1
23	00413	SPRING	1
24	00415	PLUG	1
25	046594	SAFETY LEVER SPRING	1
26	046001	STRAIGHT STONE GUARD	1
27	046006	STONE SHIELD	1
28	00402	FLANGE	2
29	A1436	5/8-11 HEAVY HEX NUT	1
30	A6306	1/4-20 X 1 FLAT HEAD BOLT	2
31	A2190	1/4 SAE FLAT WASHER	8
32	06909	RUB BLOCK	1
33	A1021	5/16-18 X 3/4 HEX HEAD BLOT GR 5 ZP	7
34	A3810	5/16 LOCK WASHER	2
35	A2191	5/16 SAE FLAT WASHER	6
36	A6062	1/8 X 1 SPRING PIN	2
37	06901	FRAME ASSEMBLY	1
38	LC-050	1/2 I.D. SET COLLAR	2
39	01909	LOCKING KNOB	1
40	A2192-N	NYLON WASHER	1
41	00795	FLOW CONTROL VALVE	1
42	01627	SPRING	1
43	05954	ACTUATION BUTTON	1
44	231P-04	#4 SAE O-RING HEX SOCKET PLUG	2
45	06952	SAFETY LEVER RESET BLOCK	1
46	A5602	1/4-20 X 5/16 SOCKET HEAD SET SCREW	1
47	A1452	5/16-18 HEX JAM NUT	1
48	A1019	5/16-18 WELD STUD	1
49	06954	MANIFOLD MOUNT BRACKET	1
50	A1008	1/4-20 X 2 3/4 HEX HEAD BOLT GR 5 ZP	2
51	A2046	1/4-20 NYLOCK NUT	4
52	A1005	1/4-20 X 1 3/4 HEX HEAD BOLT GR 5 ZP	4
53	00796	FLOW CONTROL CARTRIDGE VALVE	1
54	A1052	3/8-16 X 3 1/2 HEX HEAD BOLT GR 5 ZP	2
55	A1054	3/8-16 X 4 HEX HEAD BOLT GR 5 ZP	2
56	A2192	3/8 SAE FLAT WASHER	4
57	A6925	DIA. 3/8 X 5/16 SHOULDER BOLT	1
58	A2499	1/4-20 WING NUT	1
59	A5608	1/4-20 X 7/8 HEX SOCKET SET SCREW	1
60	06910	WRENCH	1
61	06911	WHEEL FLANGE KEEPER	1
62	06328	KNOB	1
63	06908	WHEEL PIN	1
64	00108-01	RAIL WHEEL FLANGE	2
65	06912A	RAIL WHEEL	1
66	06903	RAIL GUIDE FRAME	1

**Pandrol**

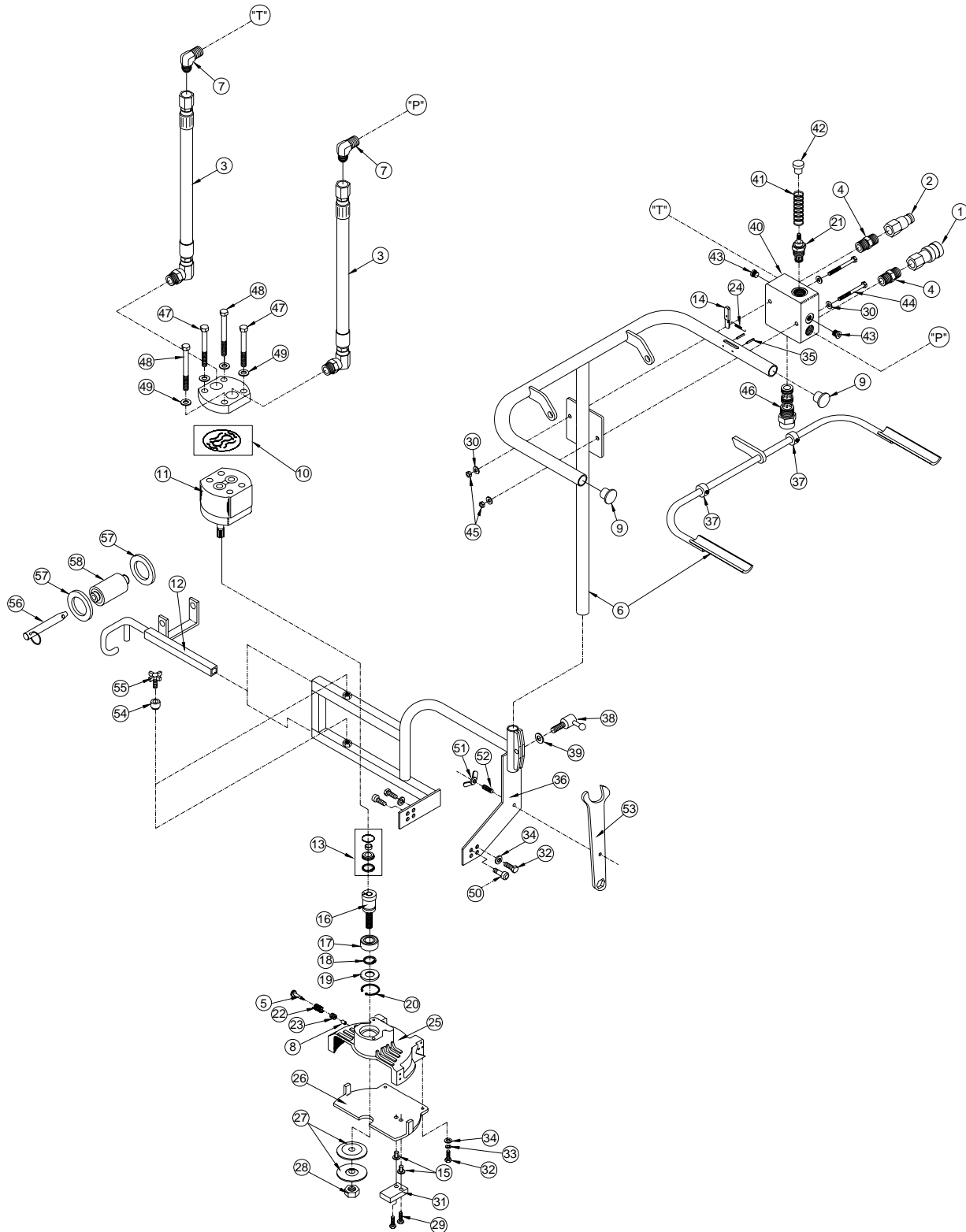
**PHONE:(419) 592-5050**

**FAX:(419) 599-3630**

*Pandrol reserves the right to change parts, features, or specifications without notice.*

10/19

**06950**  
**MULTI-PURPOSE GRINDER**  
**w/ WELDED TRIGGER BAIL**



**Pandrol**

**PHONE:(419) 592-5050**

**FAX:(419) 599-3630**

*Pandrol reserves the right to change parts, features, or specifications without notice.*

10/19



**06950**  
**MULTI-PURPOSE GRINDER**  
**w/ WELDED TRIGGER BAIL**

ITEM NO.	PART NO.	DESCRIPTION	QTY.
1	00145	QUICK DISCONNECT COUPLER	1
2	00146	QUICK DISCONNECT NIPPLE	1
3	05955	PIGTAIL HOSE ASSEMBLY	2
4	69-08-08	1/2 MP x 1/2 MP NIPPLE	2
5	A6910	DIA. 1/4 X 1 SHOULDER BOLT	1
6	06956	HANDLE	1
7	405-08-08	1/2 MP X 1/2 MJIC 90 ELBOW	2
8	00412	LOCKING PIN	1
9	05436	PLUG	2
10	01631	INTERNAL SEAL KIT	1
11	00410A	TOP PORT MOTOR	1
12	06903	RAIL GUIDE FRAME	1
13	01612	MOTOR SEAL KIT	1
14	03981	SAFETY LEVER	1
15	A2062	NUT INSERT	2
16	047001	DRIVE SHAFT CCW	1
17	046003	BEARING	1
18	046005	RETAINING RING	1
19	046004	SEAL	1
20	00403	INTERNAL RETAINING RING	1
21	05960	TRIGGER VALVE	1
22	00413	SPRING	1
23	00415	PLUG	1
24	046594	SAFETY LEVER SPRING	1
25	046001	STRAIGHT STONE GUARD	1
26	046006	STONE SHIELD	1
27	00402	FLANGE	2
28	A1436	5/8-11 HEAVY HEX NUT	1
29	A6306	1/4-20 X 1 FLAT HEAD BOLT	2
30	A2190	1/4 SAE FLAT WASHER	4
31	06909	RUB BLOCK	1
32	A1021	5/16-18 X 3/4 HEX HEAD BOLT GR 5 ZP	4
33	A3810	5/16 SAE LOCKWASHER	2
34	A2191	5/16 SAE FLAT WASHER	4
35	A6062	1/8 X 1 SPRING PIN	2
36	06901	FRAME ASSEMBLY	1
37	LC-050	1/2 I.D. LOCK COLLAR	2
38	-1901	LOCKING KNOB	1
39	A2192-N	NYLON WASHER	1
40	00795	FLOW CONTROL MANIFOLD	1
41	01627	SPRING	1
42	05954	ACTUATION BUTTON	1
43	231P-04	#4 SAE O-RING HEX SOCKET PLUG	2
44	A1009	1/4-20 X 2 3/4 HEX HEAD BOLT GR 5 ZP	2
45	A2046	1/4-20 NYLOCK NUT	2
46	00796	FLOW CONTROL CARTRIDGE VALVE	1
47	A1052	3/8-16 X 3 1/2 HEX HEAD BOLT GR 5 ZP	2
48	A1054	3/8-16 X 4 HEX HEAD BOLT GR 5 ZP	2
49	A2192	3/8 SAE FLAT WASHER	4
50	A6925	DIA. 3/8 X 5/16 SHOULDER BOLT	1
51	A2499	1/4-20 WING NUT	1
52	A5608	1/4-20 X 7/8 HEX SOCKET SET SCREW	1
53	06910	WRENCH	1
54	06911	WHEEL FLANGE KEEPER	1
55	06328	KNOB	1
56	06908	WHEEL PIN	1
57	06912A-03	RAIL WHEEL FLANGE	2
58	06912A	RAIL WHEEL	1

**Pandrol**

**PHONE:(419) 592-5050**

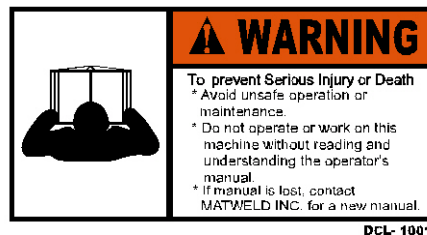
**FAX:(419) 599-3630**

*Pandrol reserves the right to change parts, features, or specifications without notice.*

10/19

## 06900 MULTI-PURPOSE GRINDER

### DECAL LEGEND



Pandrol

PHONE:(419) 592-5050

FAX:(419) 599-3630

*Pandrol reserves the right to change parts, features, or specifications without notice.*

10/19

### **LIMITED WARRANTY**

PANDROL, NAPOLEAN, OH, WARRANTS TO THE ORIGINAL PURCHASE OF THIS PRODUCT THAT THE PRODUCT WILL BE FREE FROM DEFECTS IN MATERIAL AND WORKMANSHIP FOR THE PERIOD OF ONE (1) YEAR AFTER THE DELIVERY OF SUCH PRODUCT TO THE CUSTOMER. OTHER EQUIPMENT AND PARTS USED, BUT NOT MANUFACTURED BY PANDROL ARE COVERED DIRECTLY BY THE WARRANTY OF THE MANUFACTURER OF THOSE PRODUCTS. PROOF OF PURCHASE MUST BE DOCUMENTED INCLUDING REFERENCE TO A SERIAL NUMBER LOCATED ON EACH TOOL. THE PURCHASER'S ONLY REMEDIES UNDER THIS LIMITED WARRANTY SHALL BE LIMITED AT PANDROL'S SOLE OPTION TO THE FOLLOWING: REPAIR, REPLACEMENT OR REFUND OF THE PURCHASE PRICE OF THE DEFECTIVE PRODUCTS. EACH OF THESE REMEDIES REQUIRES TIMELY NOTIFICATION OF THE DEFECT IN THE PRODUCT AND SUBSTANTIATION THAT THE PRODUCT HAS BEEN PROPERLY STORED, MAINTAINED AND USED. PANDROL'S OBLIGATIONS HEREUNDER EXTEND ONLY TO THE PURCHASER OF THE PRODUCT AND NOT TO ANY THIRD PARTY.

AS A CONDITION PRECEDENT TO PANDROL'S OBLIGATION HEREUNDER, THE DEFECTIVE PRODUCT MUST NOT HAVE BEEN ALTERED OR MODIFIED WITHOUT THE EXPRESS WRITTEN APPROVAL OF PANDROL THE PRODUCT MUST NOT HAVE BEEN SUBJECTED TO DELIBERATE DAMAGE, SHIPPING DAMAGE, NEGLIGENCE, TAMPERING BY UNAUTHORIZED PERSONNEL OR DAMAGE BY IMPROPER USE, STORAGE OR MAINTENANCE. SERIAL NUMBERS MUST NOT HAVE BEEN ALTERED, DEFACED OR REMOVED. SUCH ACTION VOIDS LIMITED WARRANTY.

### **EXCLUSIONS TO LIMITED WARRANTY**

*THIS LIMITED WARRANTY IS EXCLUSIVE AND IS IN LIEU OF ANY OTHER WARRANTY, WRITTEN OR ORAL, EXPRESSED OR IMPLIED, INCLUDING, WITHOUT LIMITATION, ANY IMPLIED WARRANTY OR MERCHANTABILITY OR FITNESS FOR A PARTICULAR PURPOSE.*

LIMITED WARRANTY DOES NOT COVER NORMAL WEAR AND TEAR ITEMS SUCH AS FILTERS, HOSES, COUPLERS, BITS, SOCKETS, AUGERS, AND BATTERIES.

### **LIMITATION OF LIABILITY**

EXCEPT AS PROVIDED ABOVE, PANDROL SHALL IN NO EVENT BE LIABLE OR RESPONSIBLE FOR ANY INJURY, LOSS OR DAMAGE, DIRECT, INCIDENTAL OR CONSEQUENTIAL, ARISING OUT OF THE USE OR MISUSE OR INABILITY TO USE THE PRODUCT, HOWEVER CAUSED AND ON ANY THEORY OF LIABILITY INCLUDING, WITHOUT LIMITATIONS, BREACH OF CONTRACT, TORT, (INCLUDING NEGLIGENCE OR STREET LIABILITY) AND NOT WITHSTANDING ANY FAILURE OF ANY REMEDY HEREIN OF ITS ESSENTIAL PURPOSE, EVEN IF PANDROL WAS AWARE OF THIS POSSIBILITY OF SUCH DAMAGE. PANDROL'S LIMITED WARRANTY AS SET FORTH ABOVE SHALL NOT BE ENLARGED, DIMINISHED OR AFFECTED BY, AND NO OBLIGATION OR LIABILITY SHALL ARISE OR GO OUT OF THE RENDERING OF TECHNICAL ADVICE OR SERVICE BY PANDROL OR ITS AGENTS. THE FOREGOING MAY NOT BE CHANGED EXCEPT BY WRITTEN AGREEMENT SIGNED BY AN AUTHORIZED OFFICER OF PANDROL, THE REMEDIES SET FORTH HEREIN ARE EXCLUSIVE.

## **CUSTOMER INFORMATION:**

Name \_\_\_\_\_

Company \_\_\_\_\_

Serial # of your Pandrol tool \_\_\_\_\_

(Upon receiving your Pandrol tool, make sure to list serial number above so that a good record is kept for order information.)

## **PANDROL HYDRAULIC TOOL LIST**

*All Pandrol Hydraulic Tools operate at 5 or 10 GPM @ 2000 PSI*

### **POWER UNITS:**

00100K – GASOLINE POWERED 1-10 GPM OR 2-5 GPM

02900A – DIESEL 1-10 GPM OR 2-5 GPM

*(OPTIONAL CATALYTIC EXHAUST AND/OR MSHA CERTIFIED)*

05500 – TWIN POWER DUAL CIRCUIT 1-10 GPM OR 2-5 GPM & 5000 WATT GENERATOR

02050K – GASOLINE POWERED 1-5 GPM

03700A – ELECTRIC POWER 1-10 GPM OR 2-5 GPM

### **GRINDERS:**

09200A – PRECISION FROG GRINDER

06000 – PROFILE GRINDER

06900 & 06900A – MULTI-PURPOSE GRINDER (TRIGGER VERSION AVAILABLE)

05900 – FROG/PROFILE GRINDER (TRIGGER VERSION AVAILABLE)

00700 – RAIL SURFACING GUIDE

04600 – STRAIGHT STONE CW ROTATION (TRIGGER VERSION AVAILABLE)

04700 – STRAIGHT STONE CCW ROTATION (TRIGGER VERSION AVAILABLE)

07500 – CHAMFER TOOL

04800 – CUP STONE GRINDER (TRIGGER VERSION AVAILABLE)

00600C – CUP STONE GRINDER

05400 – ANGLE GRINDER

05600 – BULL NOSE GRINDER

02400 – 10" OR 14" FROG AND SWITCH GRINDER

### **TRACK TOOLS:**

03900A – REVERSING RAIL SAW

05100A & 05100B – POWER WELD SHEAR

03500 – SELF FEED RAIL DRILL

01600A – 5 GPM 1" IMPACT WRENCH

04500D – HYDRAULIC DRILL IMPACT WRENCH

08200 – TAMPER

02800 – 60 TON BRIDGE SPREADER

01200 – SPRING ANCHOR APPLICATOR

01100A – SPIKE PULLER (SINGLE, 2 STAGE & TRIGGER VERSIONS AVAILABLE)

00800A – 16" RAIL SAW

05000 – HAND PUMP WELD SHEAR

01500 – RAIL DRILL

02500 – 10 GPM 1" IMPACT WRENCH

03100C – RAIL PULLER

08300 – SPIKE DRIVER

07650 – HYDRAULIC CLIP TOOL

### **OTHER PRODUCTS:**

HYDRAULIC MANIFOLDS

HYDRAULIC TEST GAUGES

HOSE REELS

HYDRAULIC HOSES

ACCESSORIES

Pandrol

PHONE:(419) 592-5050

FAX:(419) 599-3630

*Pandrol reserves the right to change parts, features, or specifications without notice.*

10/19