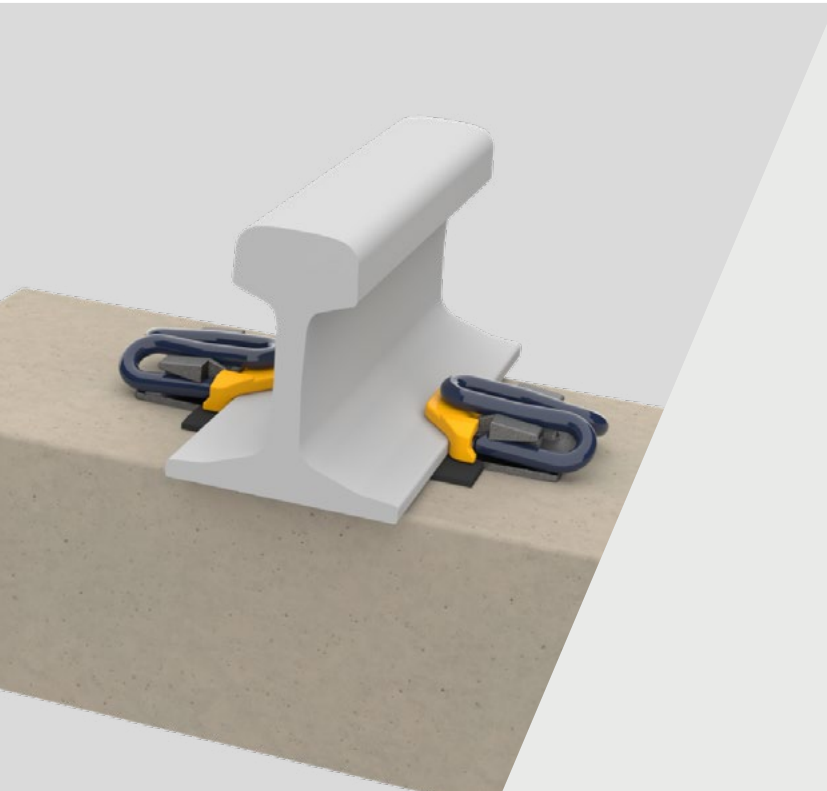


# Fastclip FD

Fastening systems



Pandrol Fastclip is an established, highly-regarded resilient, threadless rail fastening. Over the years, the Fastclip family has grown to include the FC, FD, FE Fastclip products, each of which has been designed to meet the technical and commercial demands of a specific area.

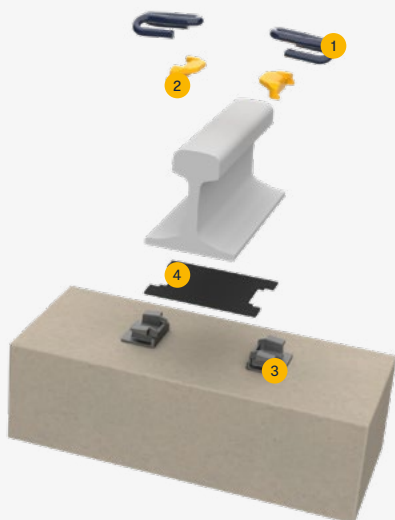
## → TECHNICAL FEATURES

### **Lateral adjustment**

Rail Insulators are available in a range of thicknesses, enabling the gauge to be adjusted by simply swapping the insulator.

## → ADVANTAGES /

- Fastclip allows for independent movement of the rail in different directions, reducing wear. This is achieved by separating the electrical insulators into two pieces, one on the side of the rail foot and the other on top of it.
- Lateral adjustments on the FD systems can be made quickly and easily with the rail in situ. To swap the rail insulations, the clips simply need to be moved to the 'insulator change' position.
- Fastclip assembly stiffness can be configured easily by changing the design or material used for the rail pad to adjust the overall track stiffness.
- Fastclip is suitable for use on either pre-cast concrete or steel sleepers. Different designs of shoulders are available to suit the requirements of specific applications.



## → COMPONENTS /

1. FD Clip
2. Rail Insulator
3. Cast iron shoulder
4. Rail Pad

## → SPECIFICATIONS /

### Assembly performance data

Recommended categories	A, B
Type of track	Ballasted
Rail inclination	1/20 or 1/40 (typical)
System type	Fastclip
Static stiffness	> 90 MN/m
Dynamic stiffness	> 100 MN/m
Lateral adjustment	± 4 mm
Vertical adjustment	On Sleeper in ballast
Gauge adjustment	± 8 mm
Electrical insulation	> 5 kΩ

Performance values can be varied, depending on product configuration. For any other configuration, please contact us.

### Standard compliance

- EN 13146 / Arema Test Methods

## → LEARN MORE