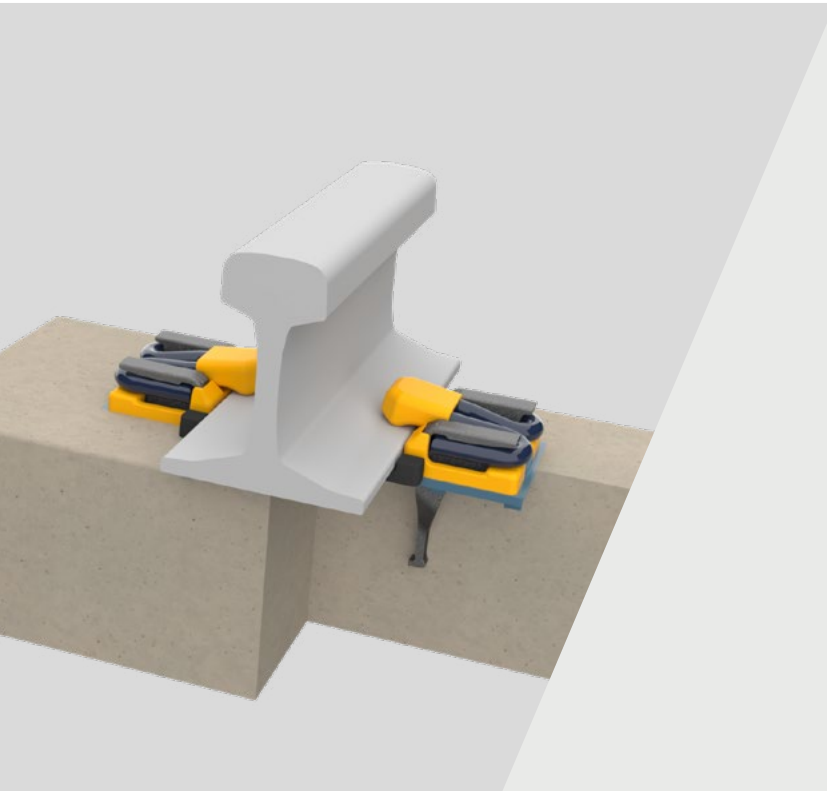


Fastclip FE

Fastening systems



Pandrol Fastclip is an established, highly-regarded resilient, threadless rail fastening. Over the years, the Fastclip family has grown to include the FC and FE Fastclip products, each of which has been designed to meet the technical and commercial demands of a specific area.

A resilient, thread less rail fastening system with the unique Pandrol switch-on switch-off function that enables fast, efficient track installation and reduced maintenance costs. FE sleepers arrive on site with all components held captive and the clips set at the parked position. It is 'switched on' by driving the clip on to the rail foot using a track machine or standard hand tool. This allows track construction and maintenance operations to be performed rapidly and efficiently.

→ TECHNICAL FEATURES

Faster and safer installation

All the components leave the sleeper factory fully pre-assembled on the sleeper, offering huge savings in manpower, and reduced distribution and handling costs during track laying, stressing and rail changing.

The correct tensioning is automatically achieved when the clip is driven into the working position. Cast-in shoulders hold the rail at correct gauge and set the Fastclip deflection. The shoulders are cast into the sleeper during the manufacturing process.

Simple to maintain

Pandrol Fastclip is virtually maintenance free. However, should you need to replace a component, it is a simple procedure to withdraw the clip, without the need to unscrew bolts.

Reduced life cycle costs

The Pandrol Fastclip system has no threaded components, eliminating costly maintenance.

Improved electrical insulation

The Fastclip assembly provides excellent electrical insulation properties. The cast shoulders are electrically isolated from the rail by the collars. The spring clips are electrically isolated from the rail by the toe insulators.

Maximising uptime

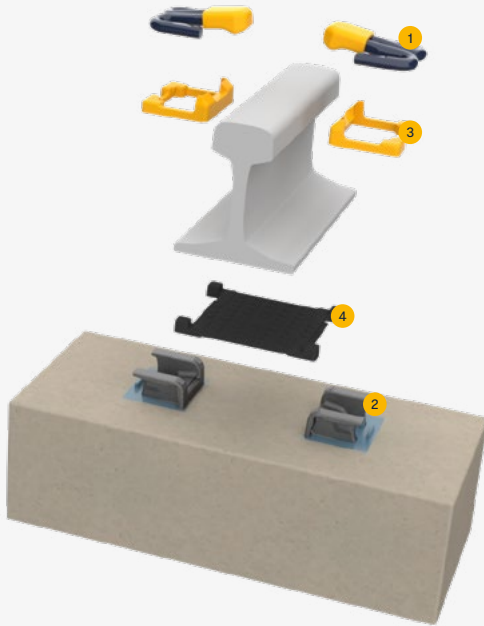
All components remain captive during the stressing procedure. The clip is simply withdrawn back to the parked position to release the rail. Stressing rollers are available for use if required.

Ready for heavy haul

The FE1500 series system is suitable for heavy haul application.

→ ADVANTAGES /

- As the fastenings are captive and the Fastclip system is compatible with mechanised equipment, very high rates of track construction and maintenance can be achieved.
- Fastclip allows for independent movement of the rail in different directions, reducing wear. This is achieved by separating the electrical insulators into two pieces, one on the side of the rail foot and the other on top of it.
- Lateral adjustments on the FE system can be made quickly and easily with the rail in situ. To swap the rail insulations, the clips simply need to be moved to the 'insulator change' position.
- Fastclip assembly stiffness can be configured easily by changing the design or material used for the rail pad to adjust the overall track stiffness.
- Fastclip is suitable for use on either pre-cast concrete or steel sleepers. Different designs of shoulders are available to suit the requirements of specific applications. Baseplate product options also exist for timber and composite sleepers.



COMPONENTS /

1. FE clip and toe insulator
2. Cast shoulder
3. Collar
4. Studded EVA rail pad

→ SPECIFICATIONS /

Assembly performance data

| | |
|------------------------|------------------------|
| Recommended categories | A, B, C, D, E |
| Type of track | Ballasted |
| Rail inclination | 1/20 or 1/40 (typical) |
| System type | Fastclip FE |
| Static stiffness | > 50 MN/m |
| Dynamic stiffness | > 60 MN/m |
| Lateral adjustment | ± 8 mm |
| Vertical adjustment | On Sleeper in ballast |
| Gauge adjustment | ± 16 mm |
| Electrical insulation | > 10 kΩ |

Performance values can be varied, depending on product configuration. For any other configuration, please contact us.

Standard compliance

- EN 13146 / Arema Test Methods

→ LEARN MORE



www.pandrol.com